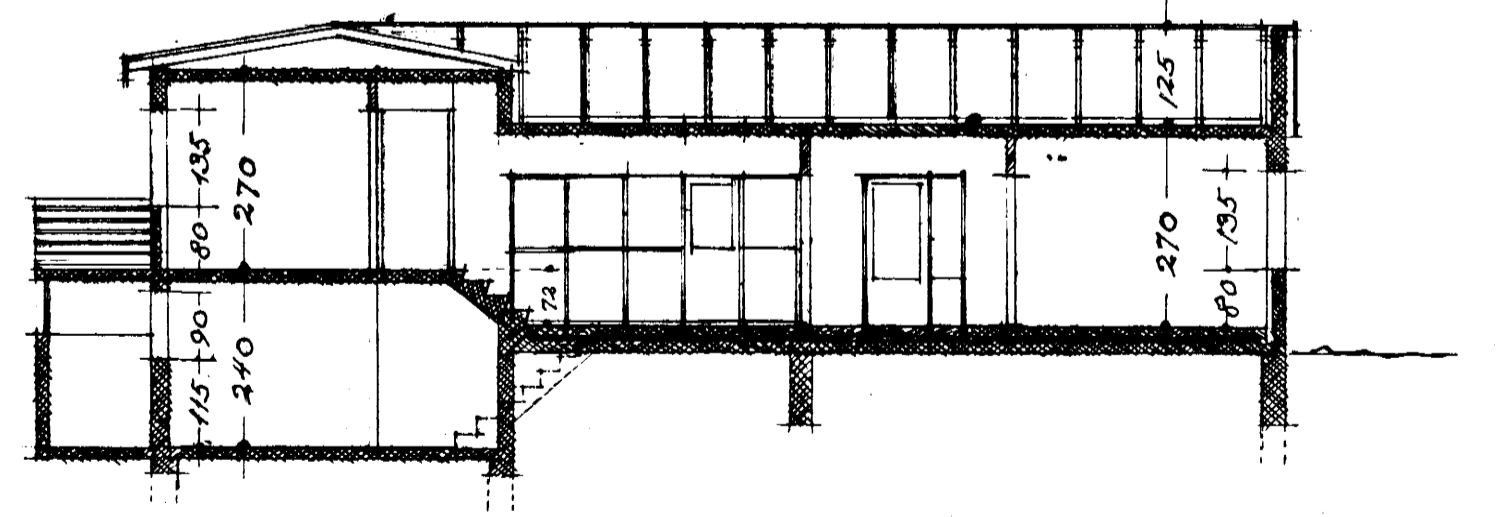
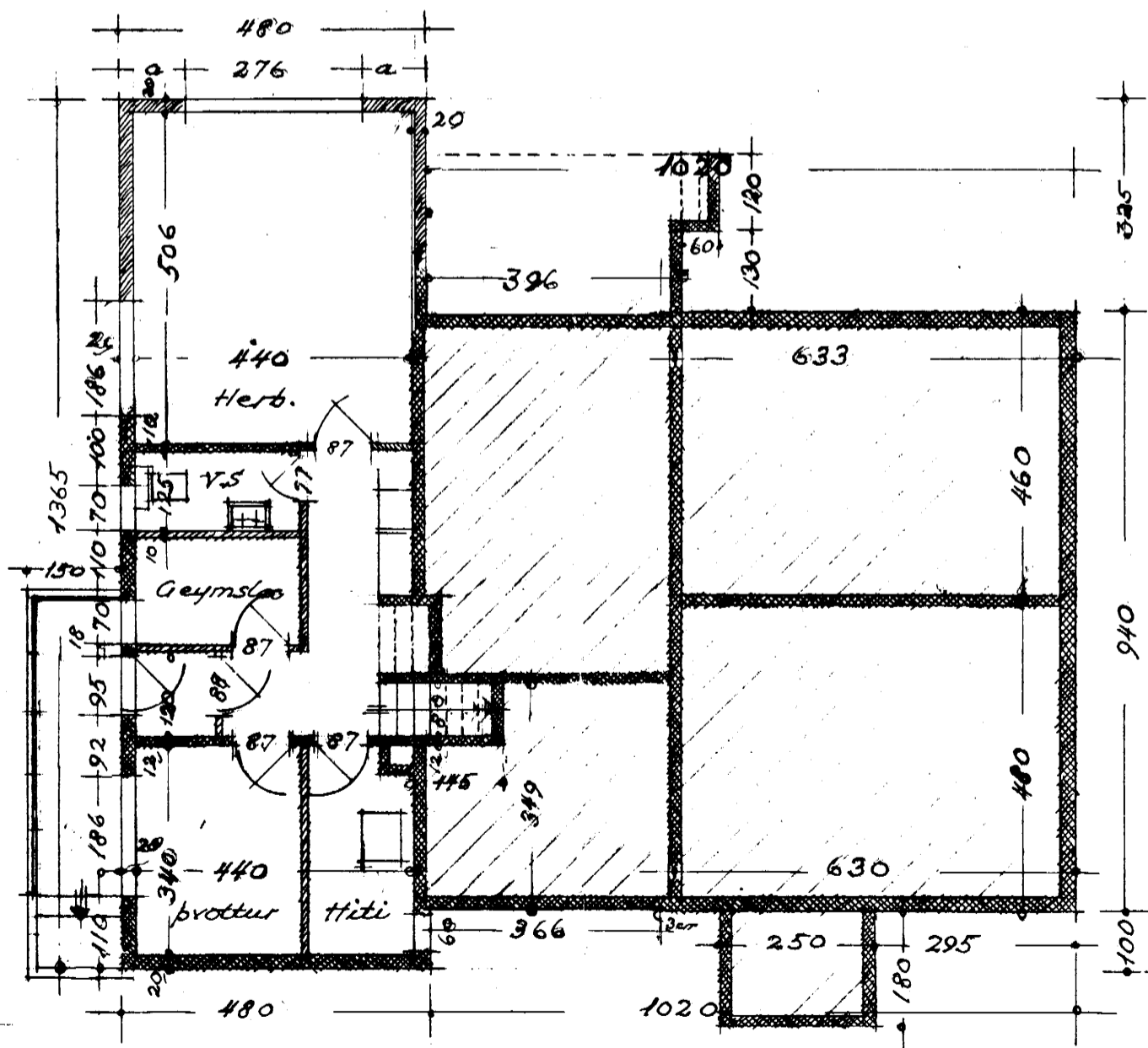
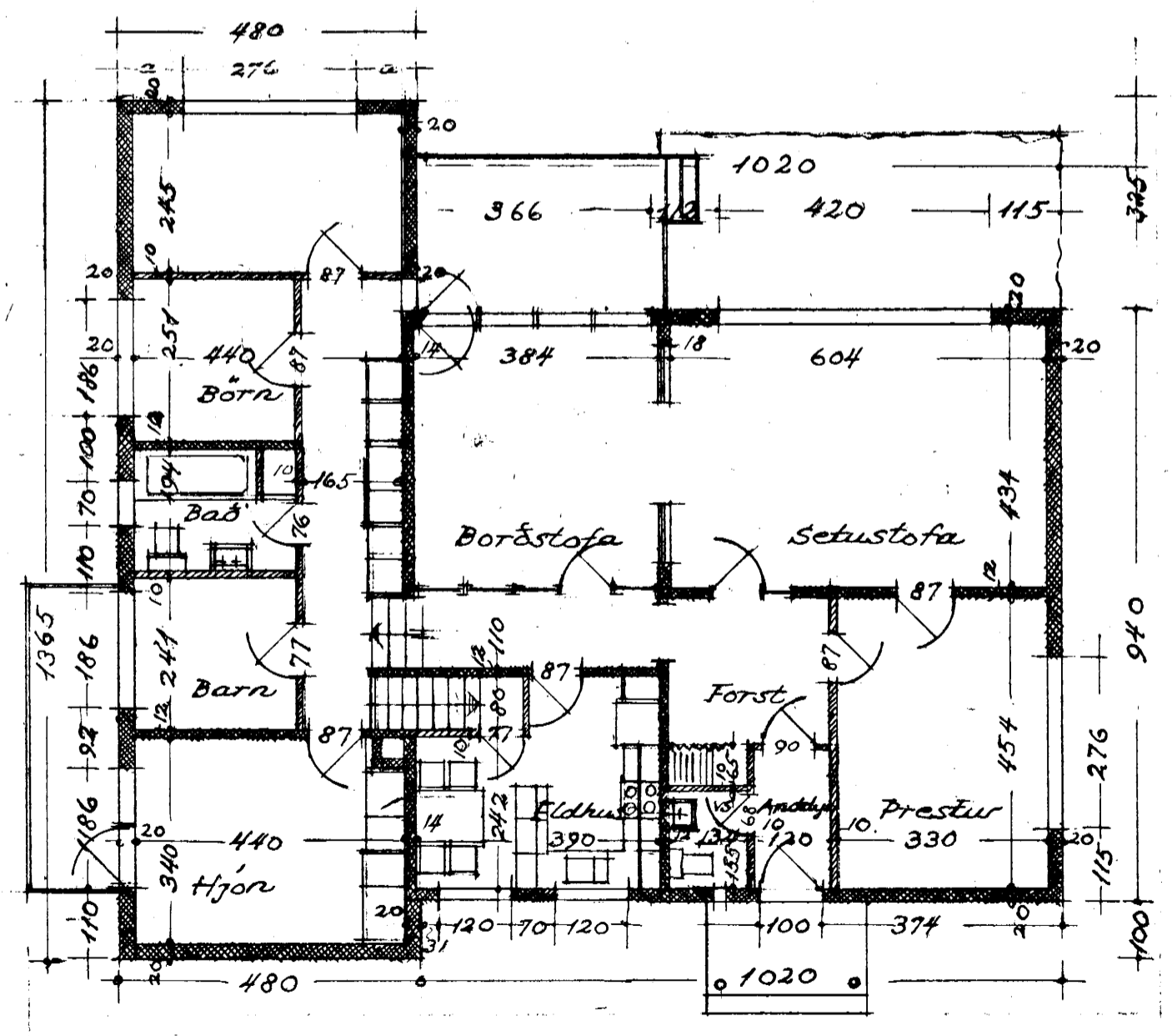
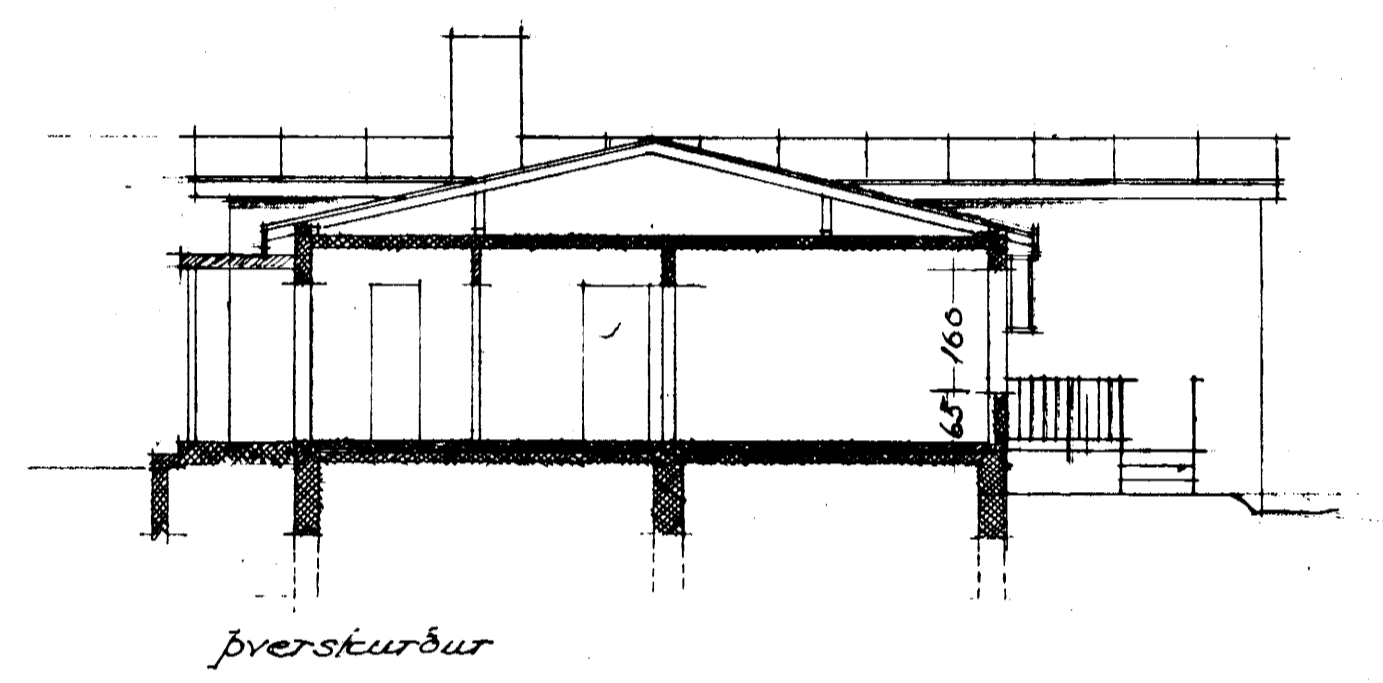
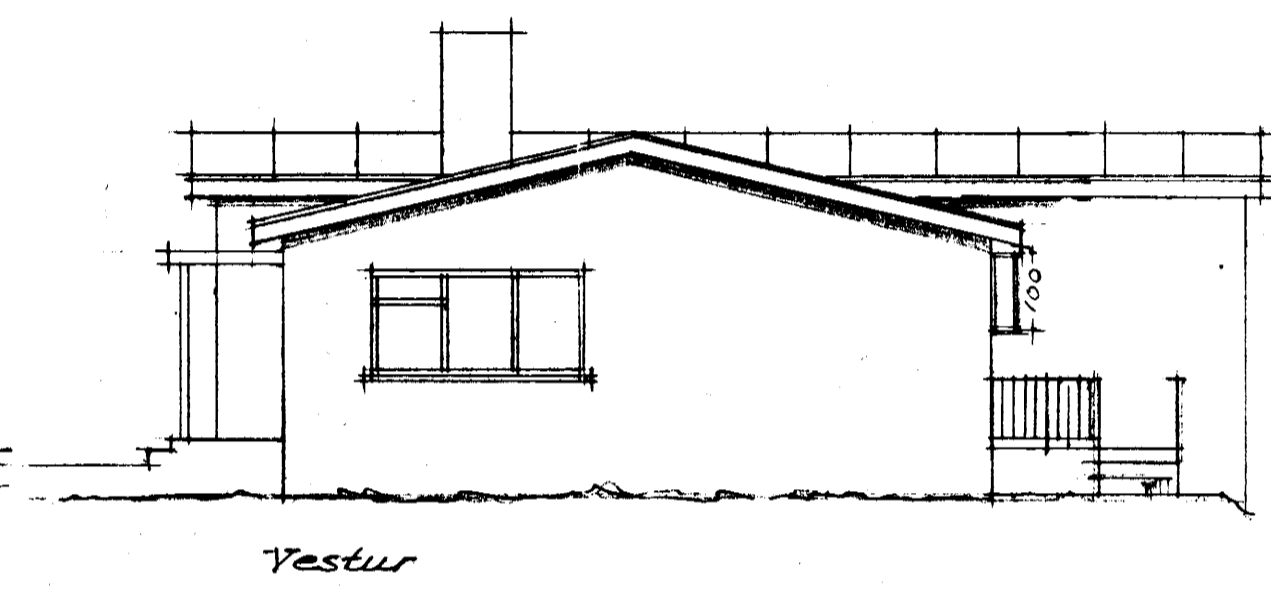
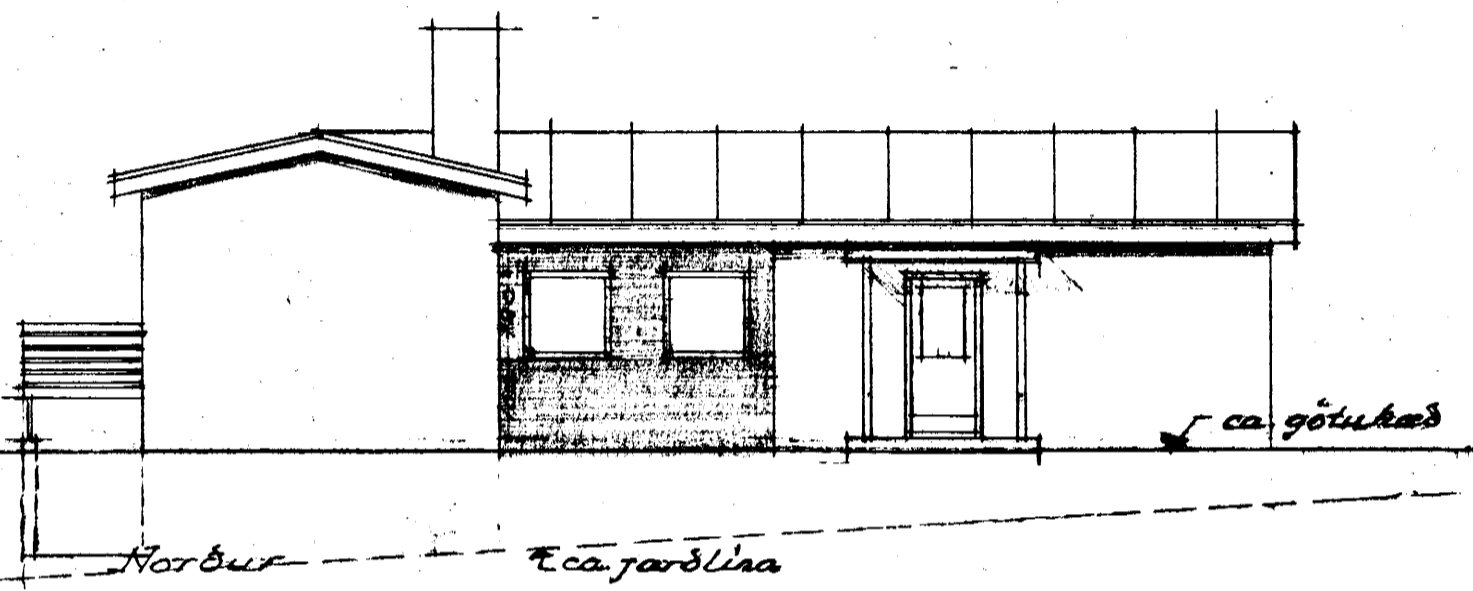
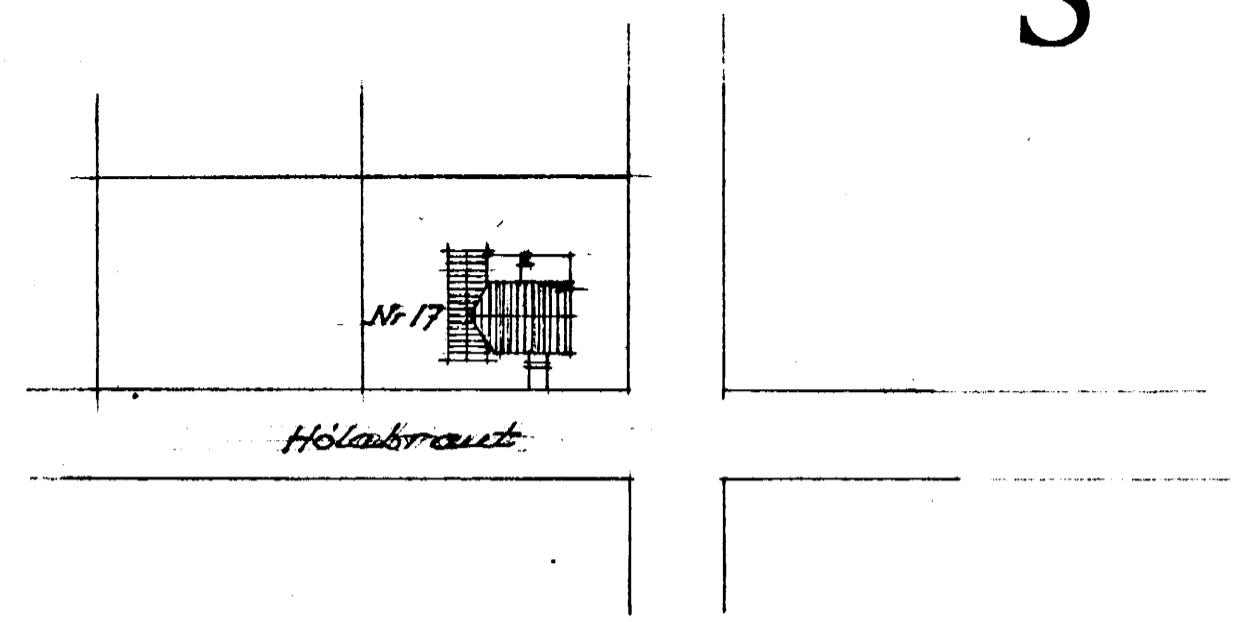
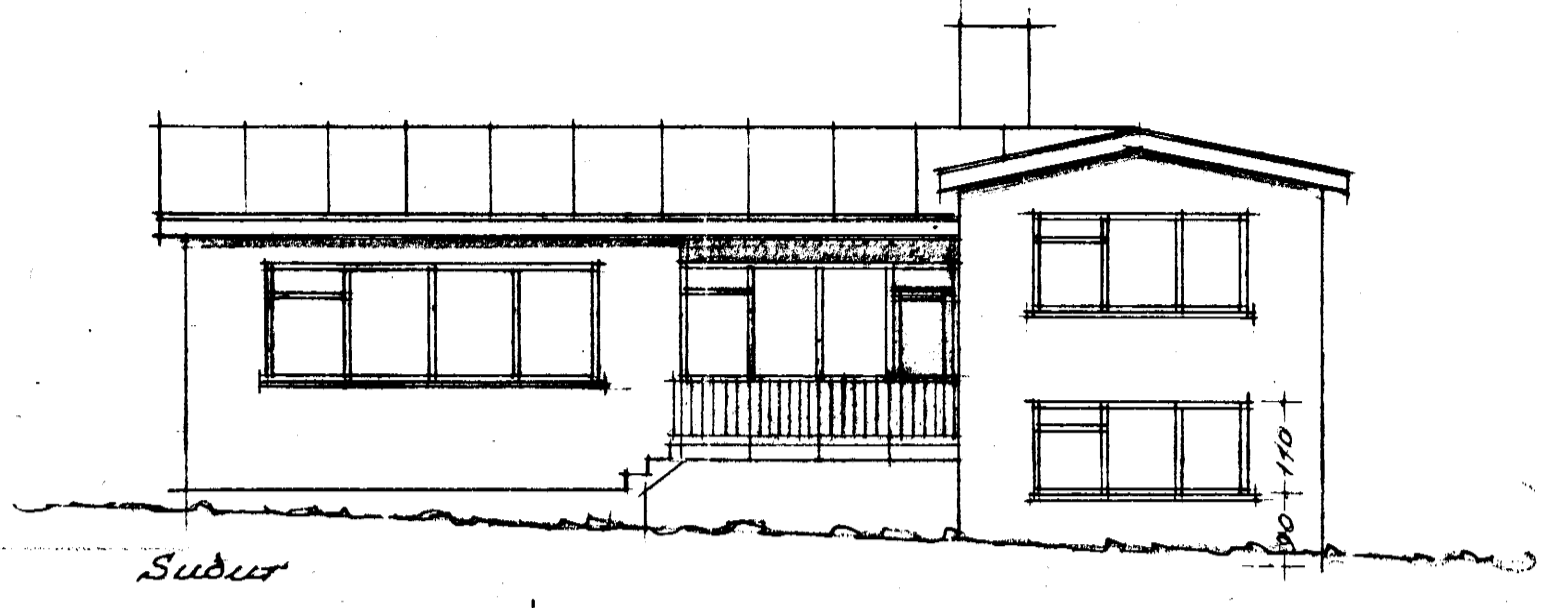
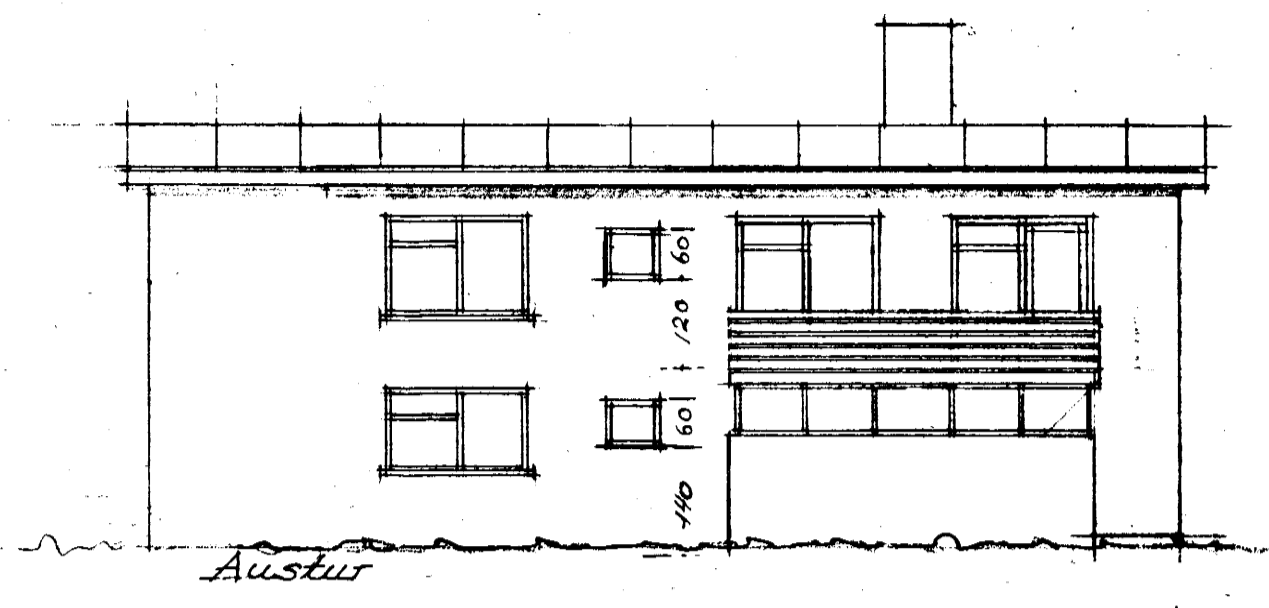


Prestssetur við Hólabraut á Dalvík
M 1:100

S



Flatarmál 1. hæðar 159,40 m²
Rúmmál án þaks ca 615 m³

Grunnmynd 1. hæð

Gjallari

Langskurður

Hólavegur 17.
Reykjavík 3 júní 1965
Ólafur Jónsson