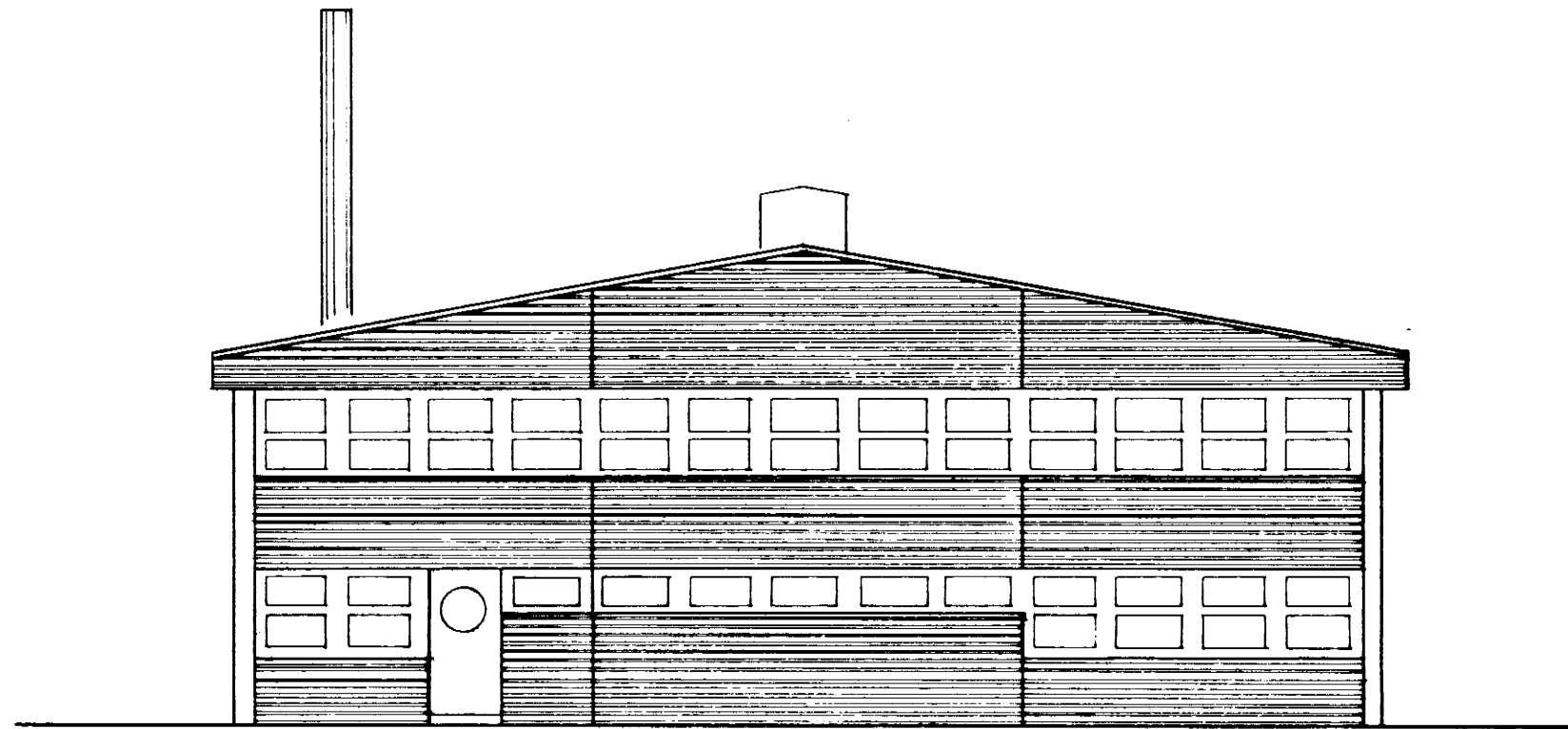
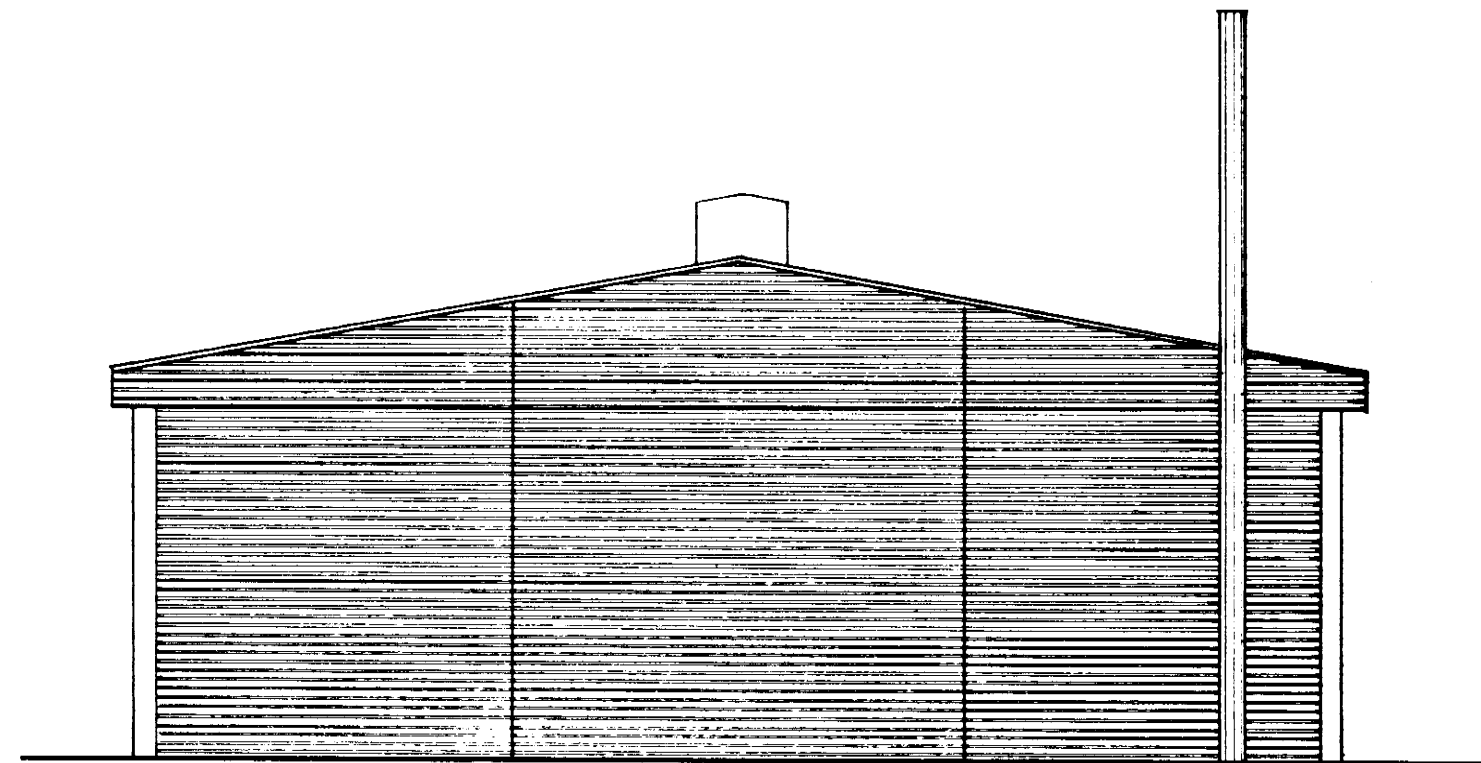


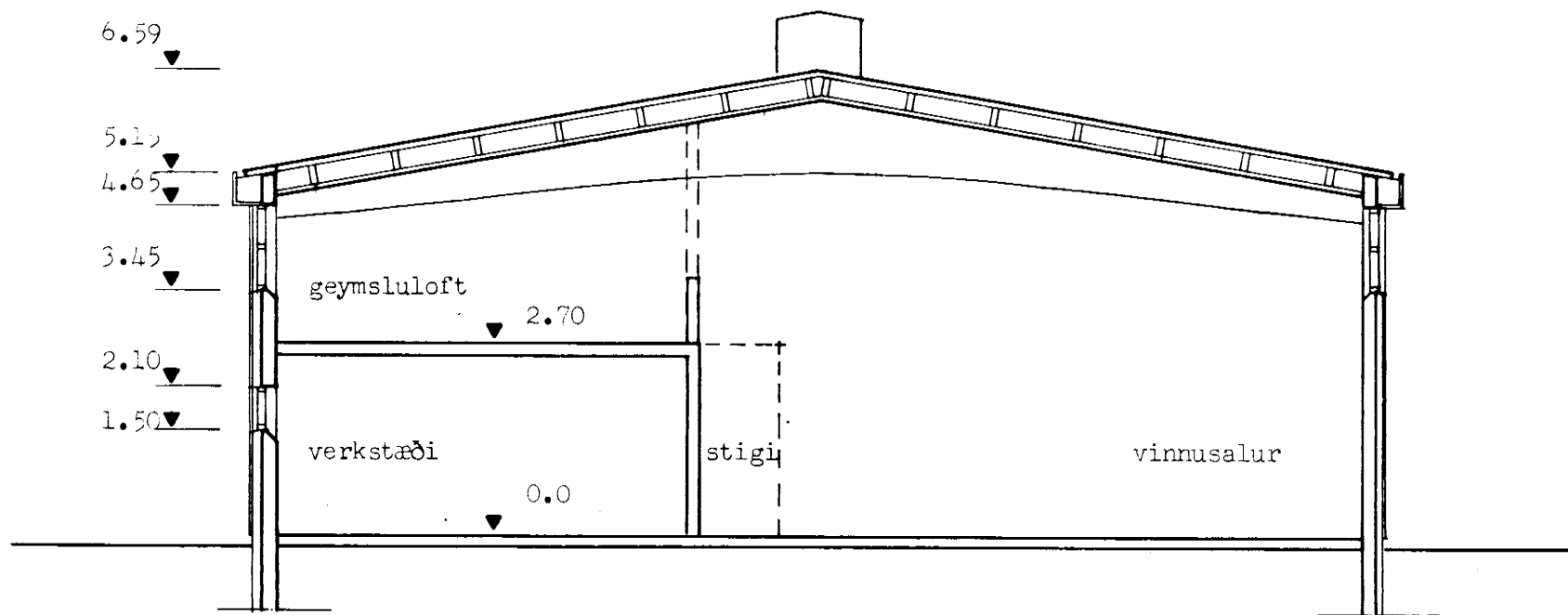
S



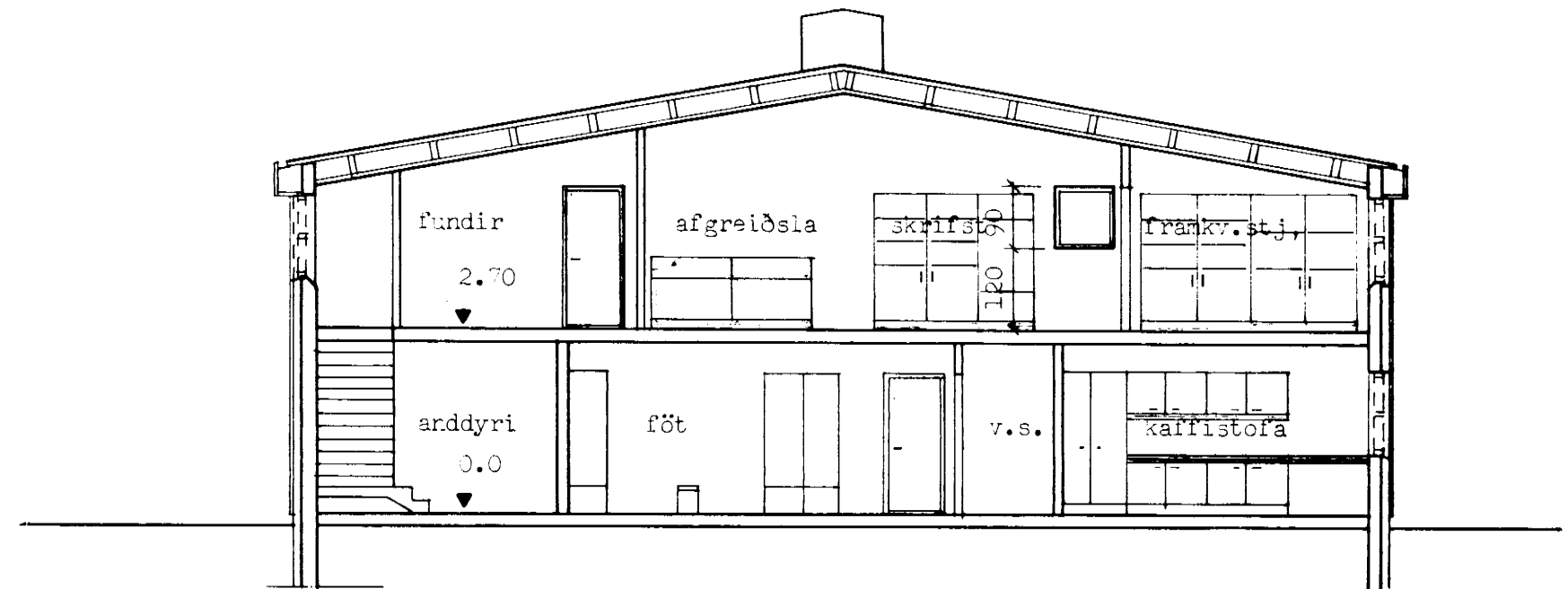
SUDUR



NORDUR



SNID A-A



SNID B-B

STÆÐIR:

Flatarmál (brúttó): 1. hæð = 700.9 m<sup>2</sup>, 2. hæð = 103.5 m<sup>2</sup> samtals: 804.4 m<sup>2</sup>

Rúmmál: (brúttó) 4114.3 m<sup>3</sup>

SAEPLAST HF

DALVIK

verk: 27.04

teiknað: BR.HS

kvarði: 1:100

efni: Stilit og snið.

dags: 21.07.1986 a:

b:

c:

blað: 104

form

*Bjarni Reykjalin*

ÁRNI ARNASON húsgagna- og innanhússarkitekt FHI

BJARNI REYKJALIN arkitekt og byggingatæknifr. FAI - FTI

ARKITEKTAR · HÖNNUÐIR

KAUPANGI V MYRARVEG 600 AKUREYRI SIMI 96-26099