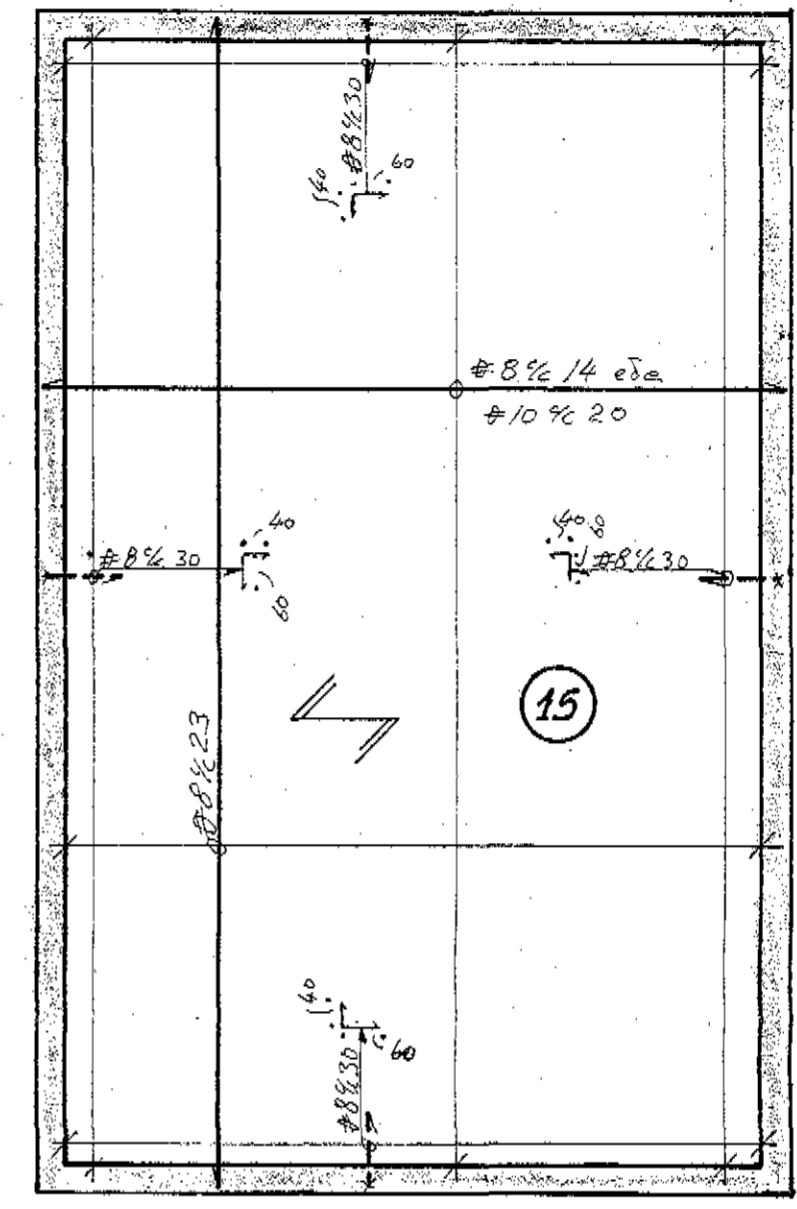
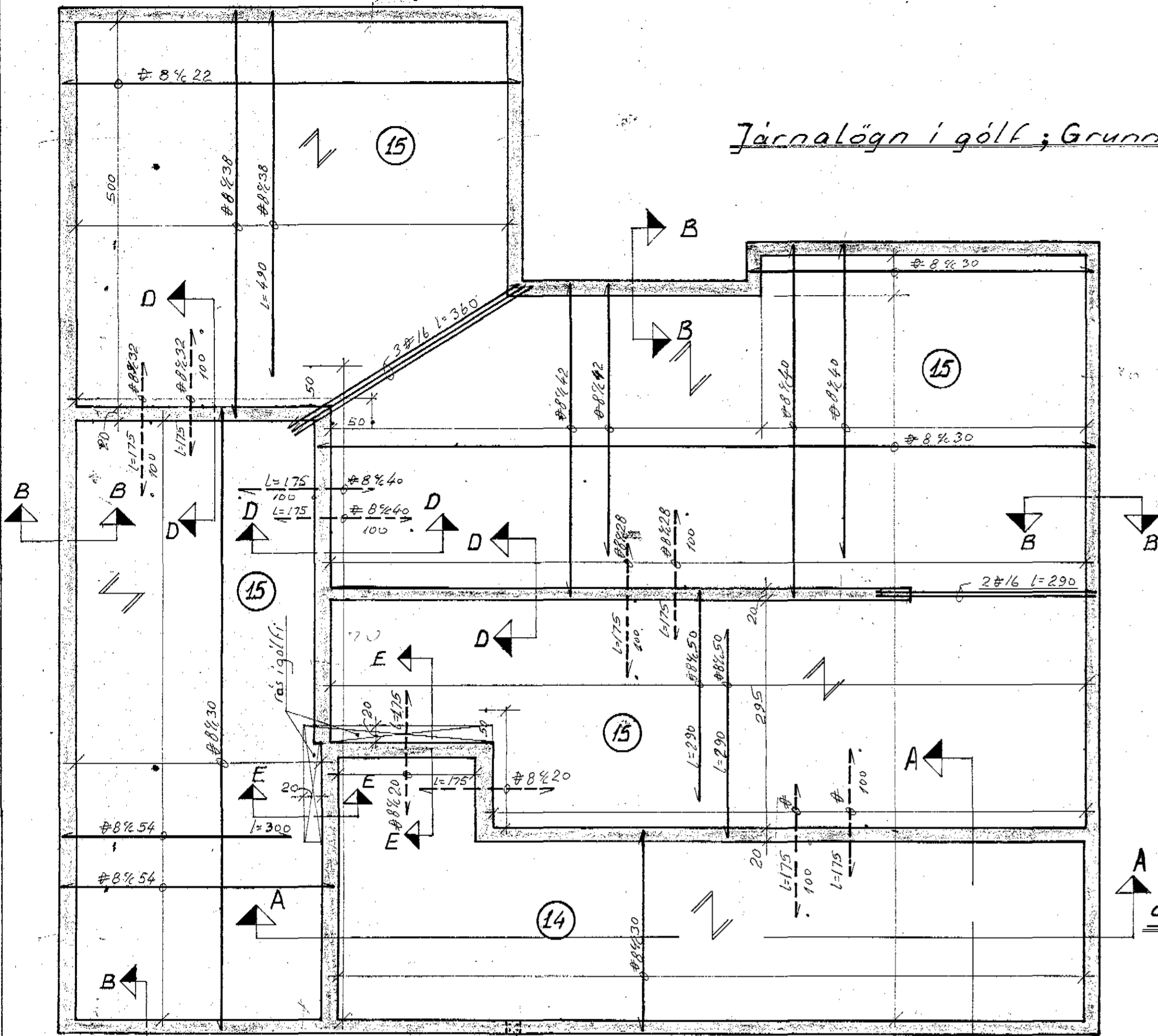
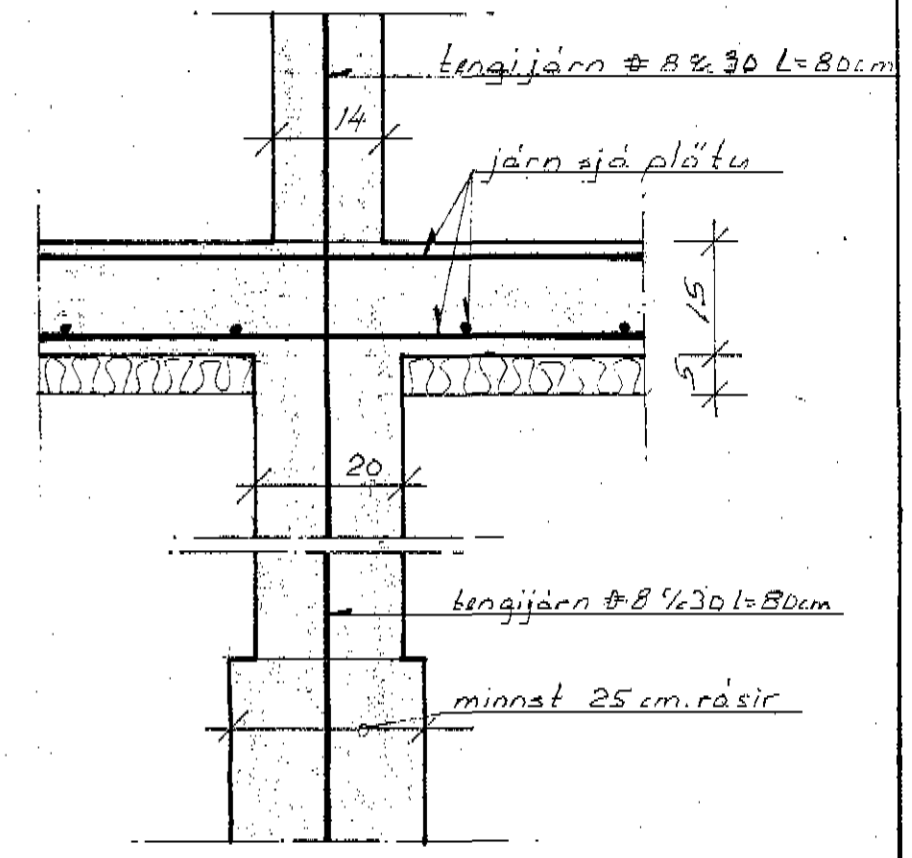


Järnalägn i golv; Grunnmynd M 1:50

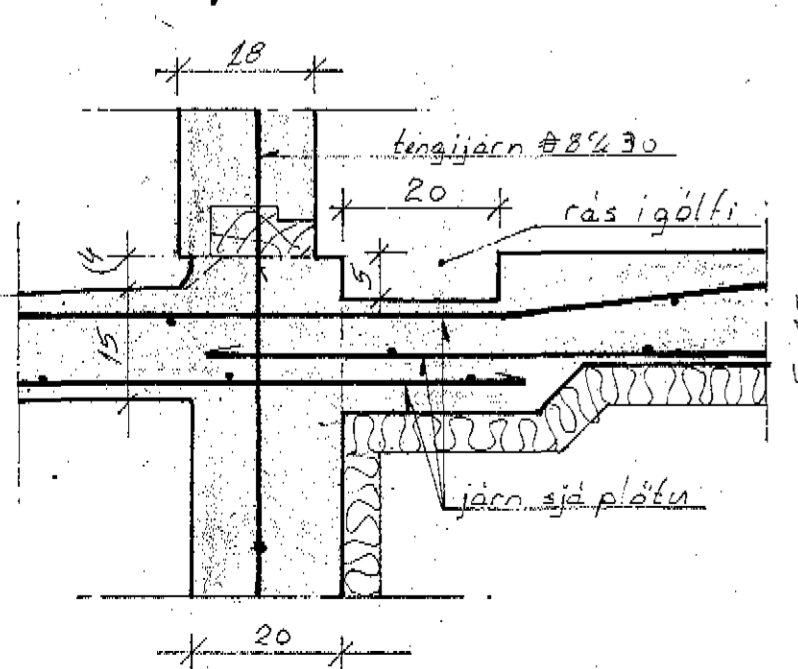
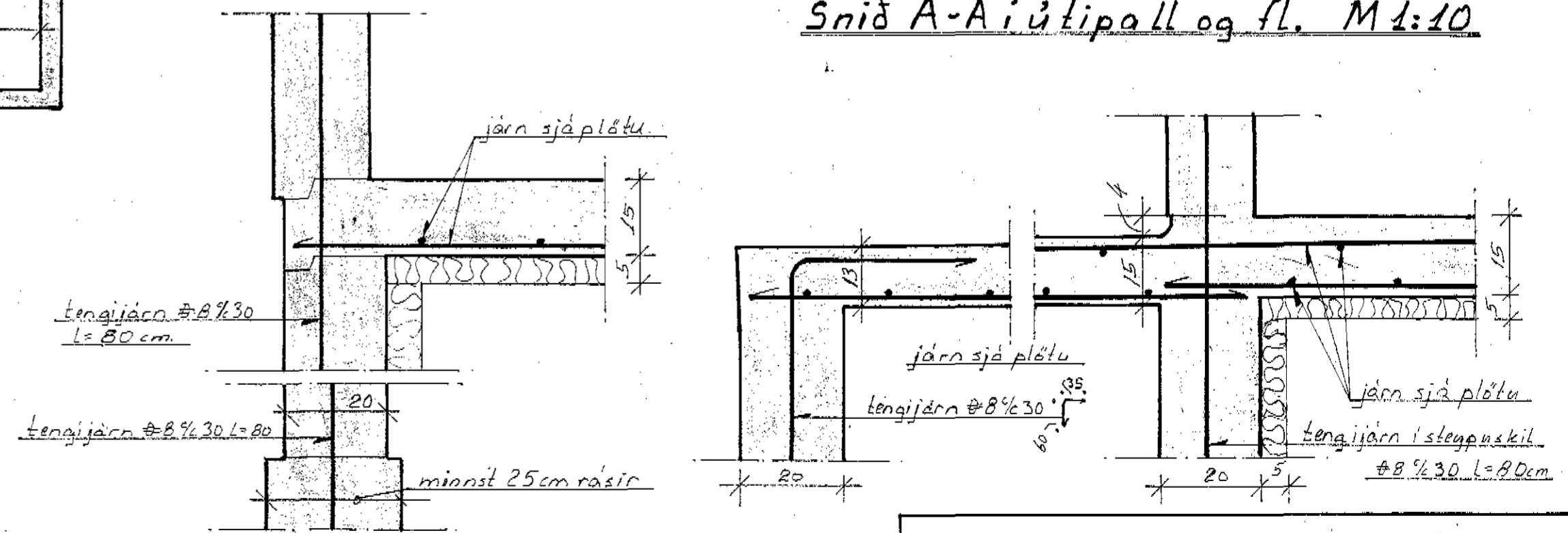


Snid B-B i undirst. útveggja M 1:10

Snid D-D i undirst. milli veggja M 1:10



Snid A-A i útíþall og fl. M 1:10



Snid E-E i rás i gólfi M 1:10

**Skýringar:**  
 (cm) táknar plötupykkt í cm.  
 ————— táknar járn í neðri brún plötu.  
 - - - - - " " " efri " "  
 <img alt="diagonal hatching symbol" data-bbox="235 820 255 840"/> ad járn í sömu átt og pílarn leggist neðst.  
 Blöndun steypu sé 300 kg/m<sup>3</sup> sement í plötur og bita  
 en 250 kg/m<sup>3</sup> sement í veggj og sókkla.  
 # táknar KS-40 með  $\sigma = 2000 \text{ kg/cm}^2$   
 Í öll steypuskil komi tengijárn #8%30 l=80cm.  
 Öll járn séu heil eða vixllögð um fertugfalt þvermál sitt.

Dröfnarbraut 1	
Järnalägn i golv og undirst.	
Blað nr. 7-1	M 1:50 1:10
Ak 7/8 '76	Ólafur Þorsteinsson MVFI