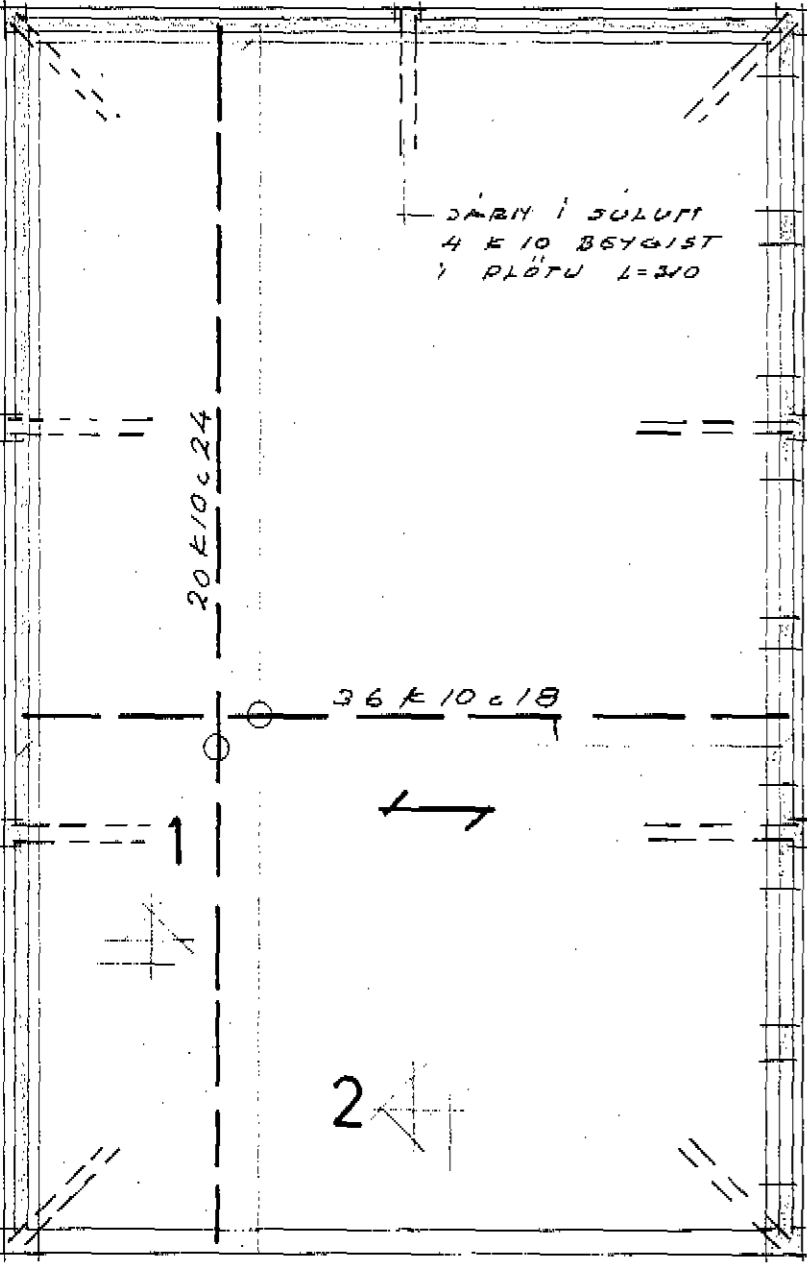


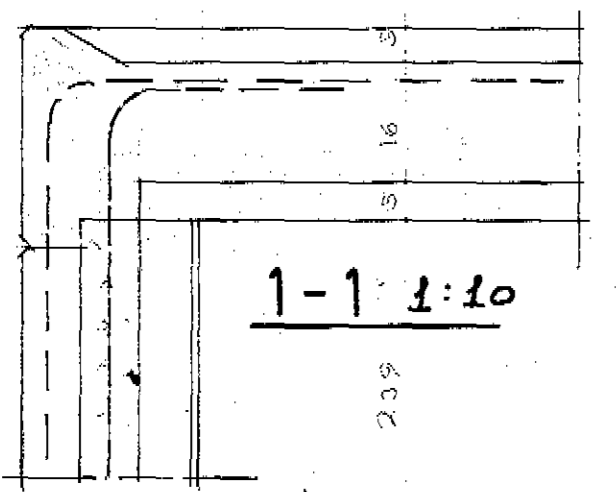
SKYRINGAR:

- TACHAR JARN I EFRI DRUM PLOTU
- NEBRI
- DESSA STERHU LIGGI HEDST.
- K10 STAL 10MM ES 40 $\sigma = 2000 \text{ KG/SM}^2$
- DYKRT PLOTU ER 16 SM
- R.B TACHAR 8MM STAL ST 37 $\sigma = 1300$

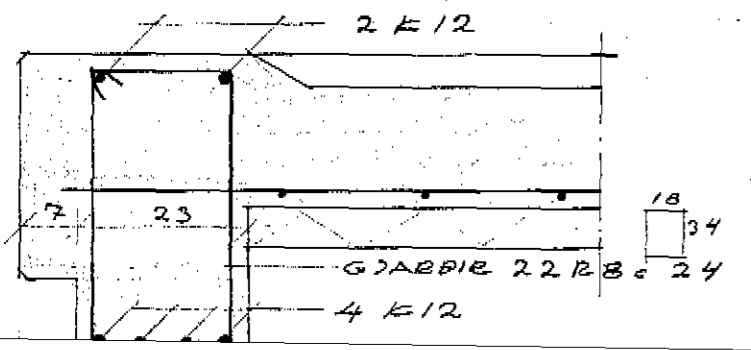


JARN I SOLUM
4 x 10 BEYGIST
I PLOTU L=340

R.B. 25 IAL 30 SM
SIL 25 BEYINGU

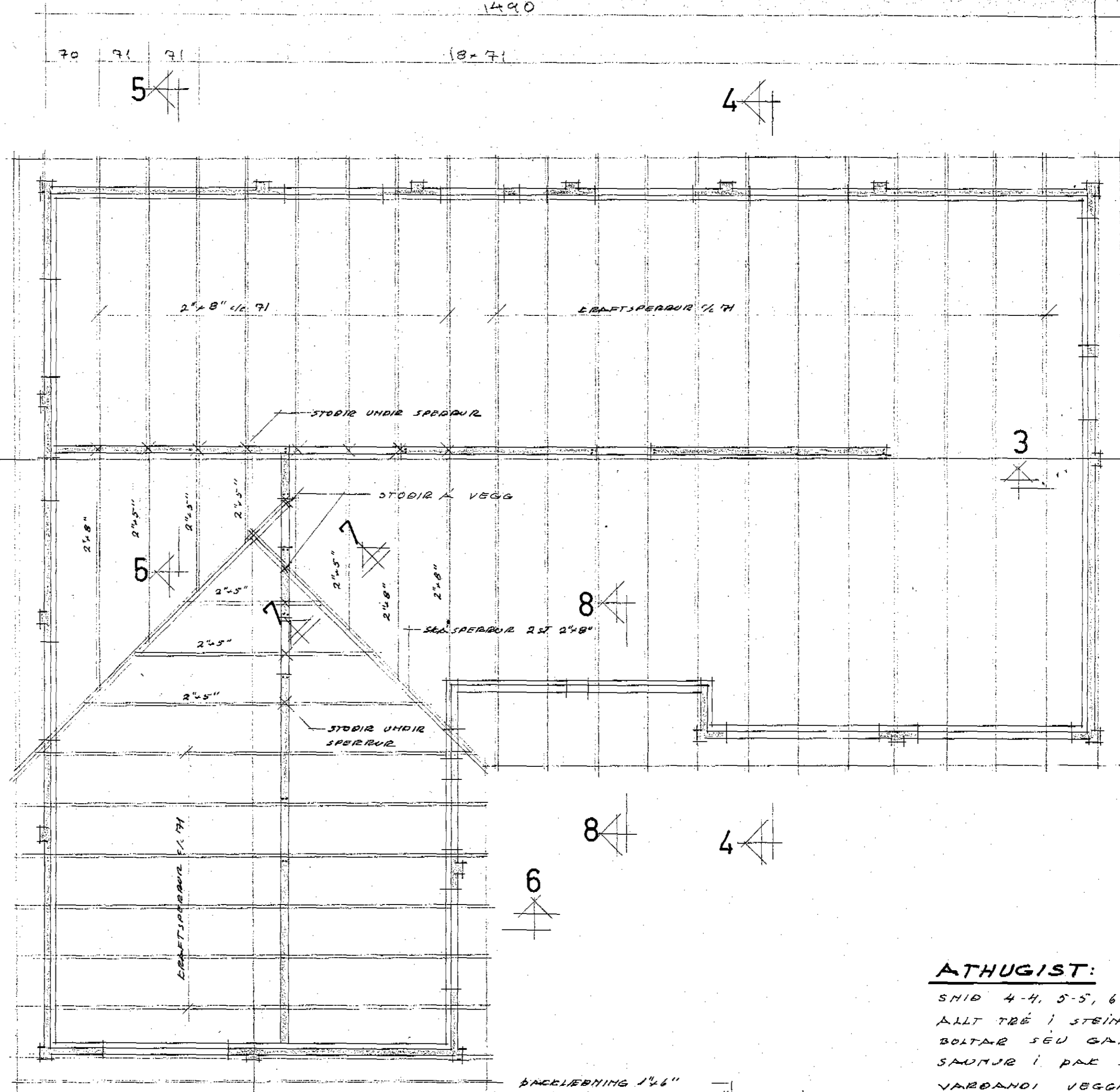


1-1 1:10



2-2 1:10

GRUNNMYND 1:50



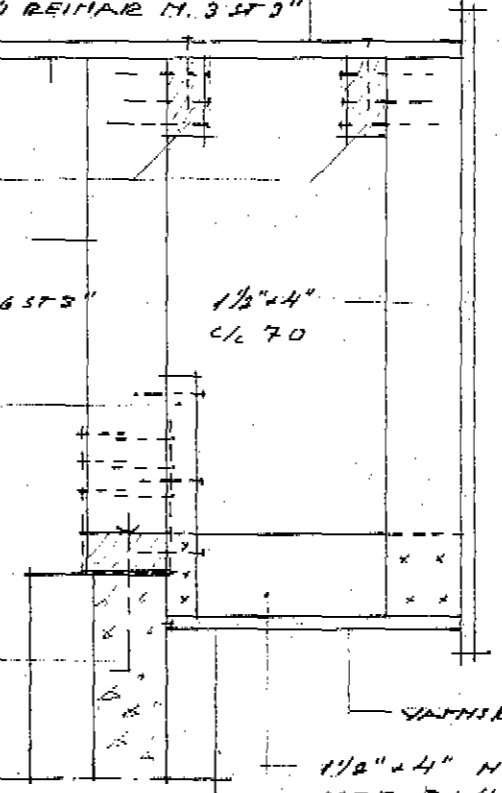
ÞACLEIÐNING 1 1/2"
HEGLIST I BEINAR M. 3 ST 3"

2 1/4" HEGLIST I STODIR
HEB 3 ST 4"
STODIR 2 1/4" CL 70
REGLIST VID BEIN HEB
GIBB 3EM HEGLIST HEB 6 ST 3"

ANEGLING 2 1/4"

1/2 ANKERI CL 90

3-3 1:10



1 1/2" 1/4" HEGLIST
HEB 2 1/4 ST 4"

ATHUGIST:

SHID 4-4, 5-5, 6-6 OG 7-7 SJA K2
ALLT TRÉ I STEIN FUMVERDIST
BOLTAR SEU GALV.
SAUMUR I ÞAK SE GALV.
VABANDI VEGGI OG SOLUM SJA
SERTEIKNINGAR AF EIMINGUM.
I STEYPTA INNVEGGI KOMI 2x10 UPP HED DYRUM
OG 2x12 YFIR DYRUM L=50+OP+50 SM.
ÖLL STEYPA SE S 200

VERK **DRAFNABRAUT 6.**

HEITI ÞAK
MKV. 1:50, 1:20, 1:10/BEIKN. N.
DAGR. JAN. 76 REIKN. N.

K1