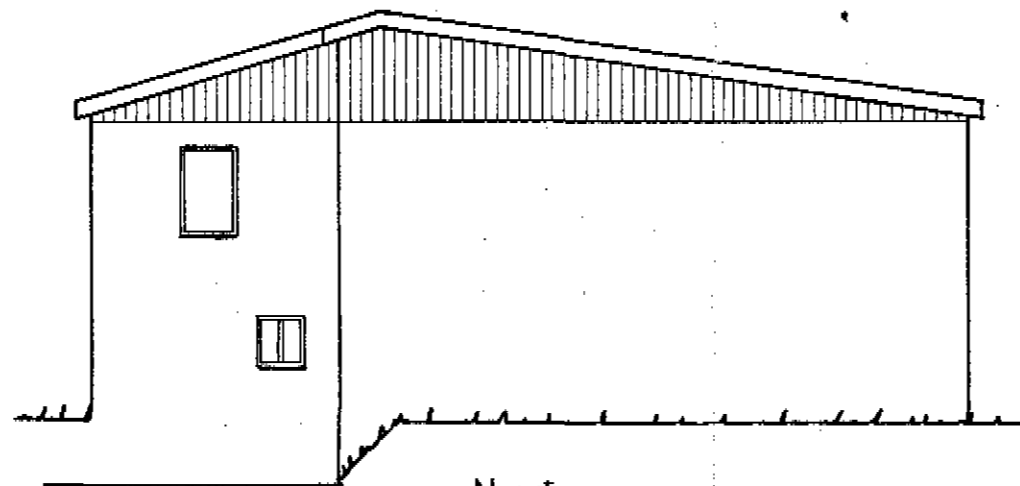
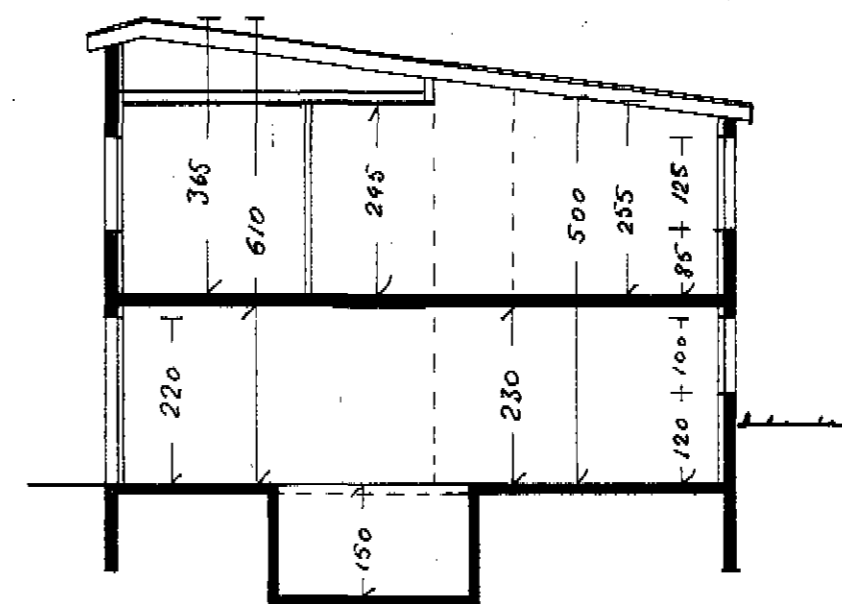


Sudur

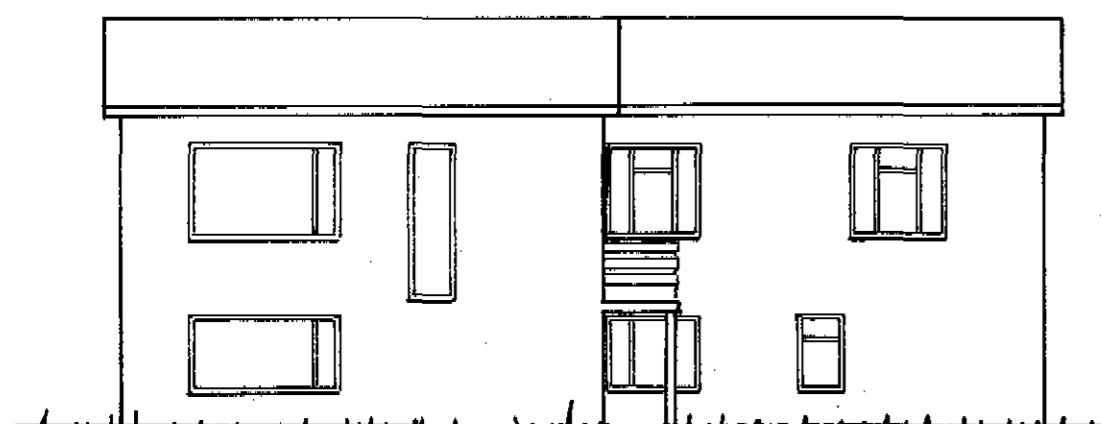


Norður

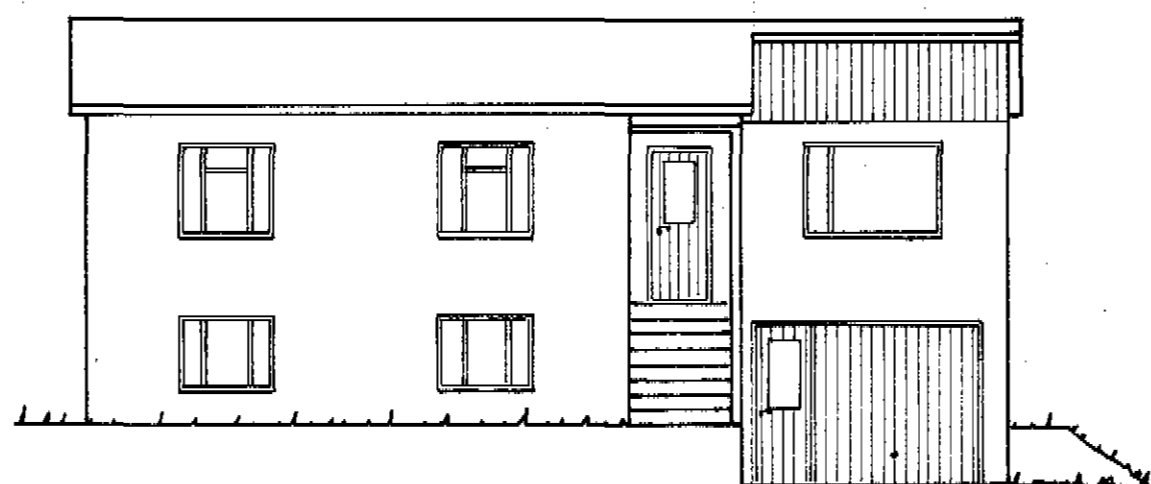


Skurður A-A
Öll hæðarmál samræmist eldri byggingu

Flatarmát 41,04 m²
Rúmmát 229,9 m³



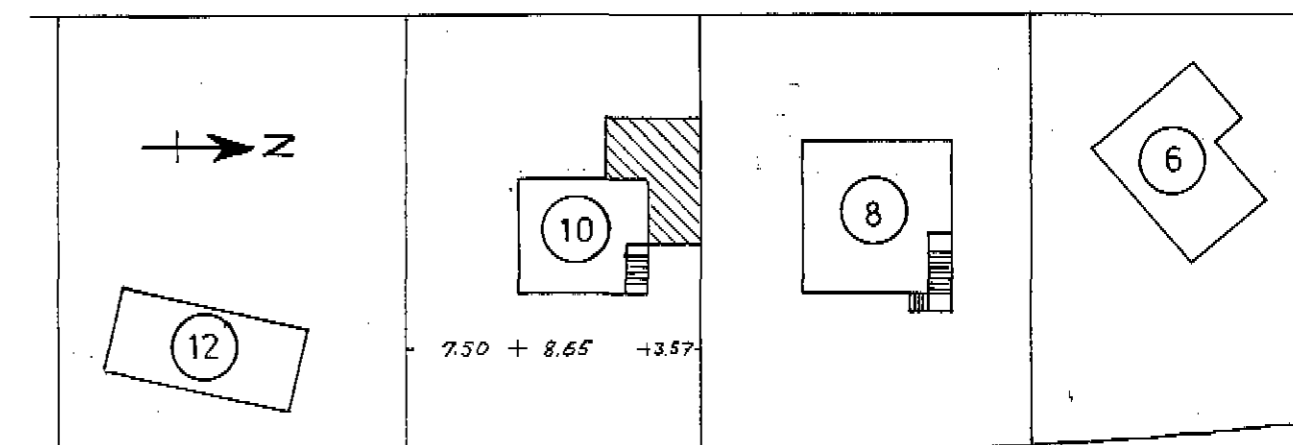
Vestur



Austur

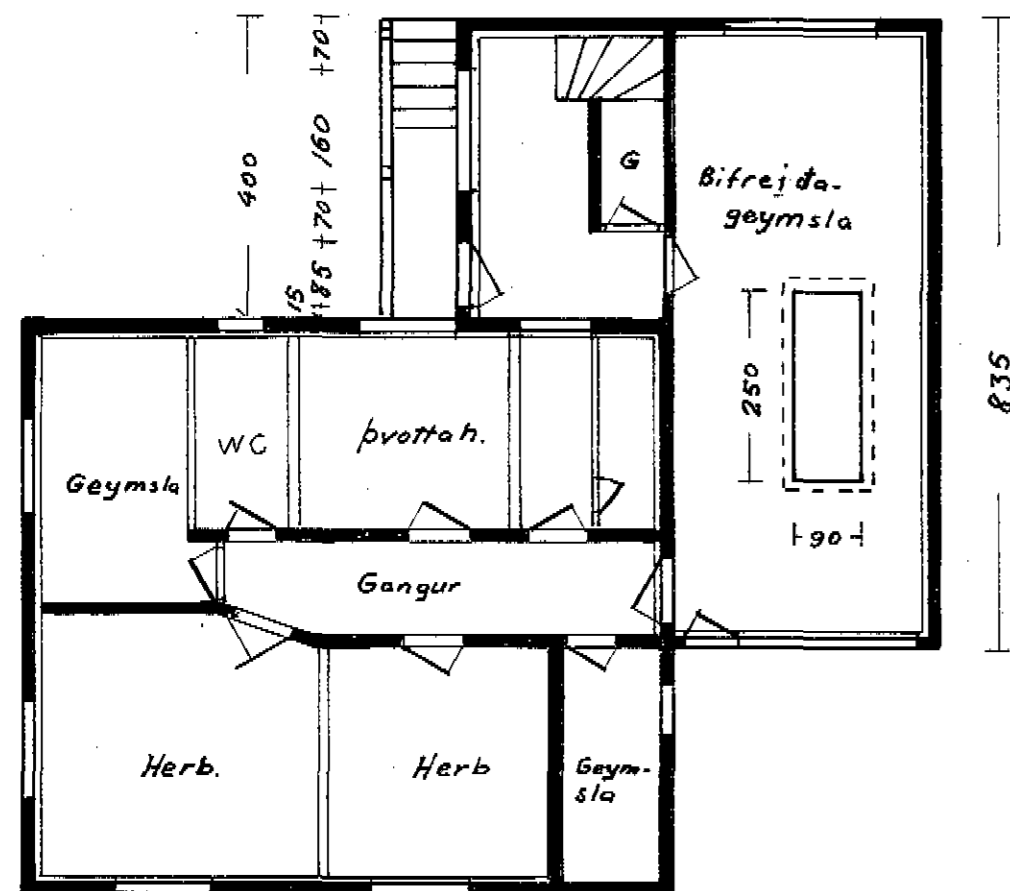
100 640
350 200 90

A
100 640
200 60 90 200 90

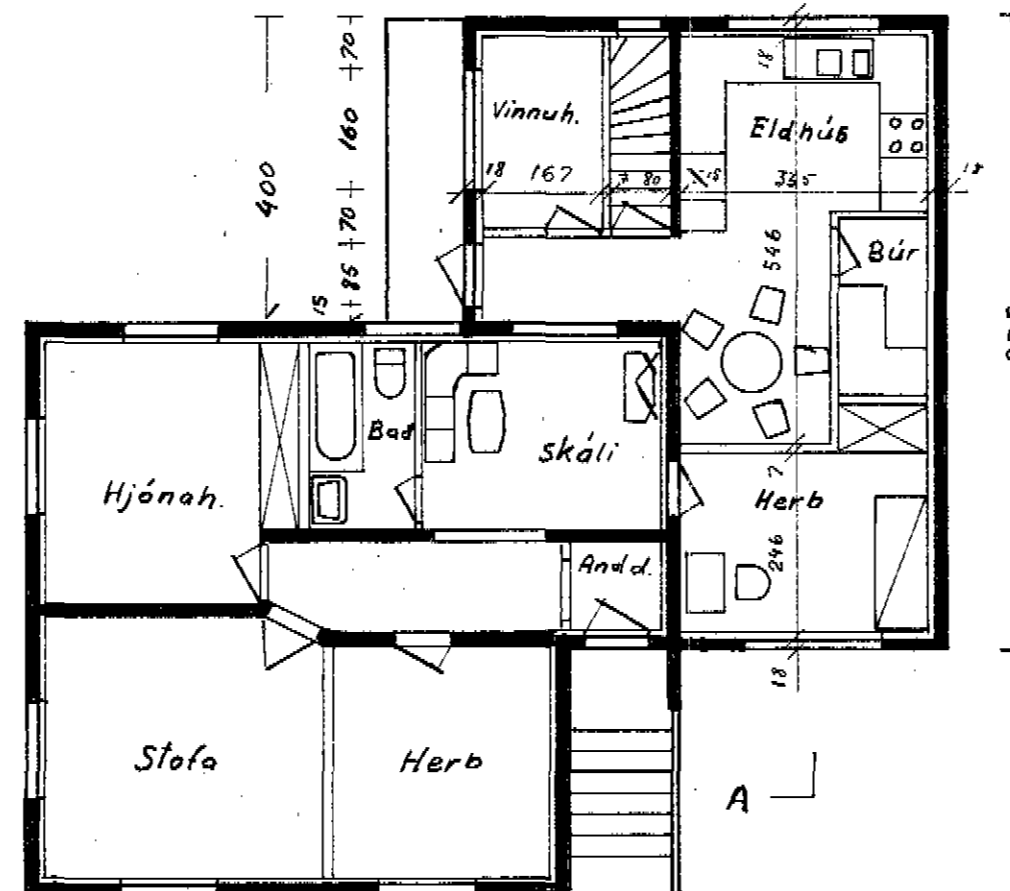


GOÐABRAUT

Afstöðumynd
M.k.v. 1:500



1. hæð.
Grunnmynd
15 305 35
355



2. hæð
Grunnmynd
85 180 90
355

Godábrátt 10 Dalvík.
Viðbygging og skýli yfir tröppur.
Grunnmynd, útlitsmynd,
skurður og afstöðumynd.
M.k.v. 1:100 og 1:500
Apríl 1981 *Oskar Salmasón*