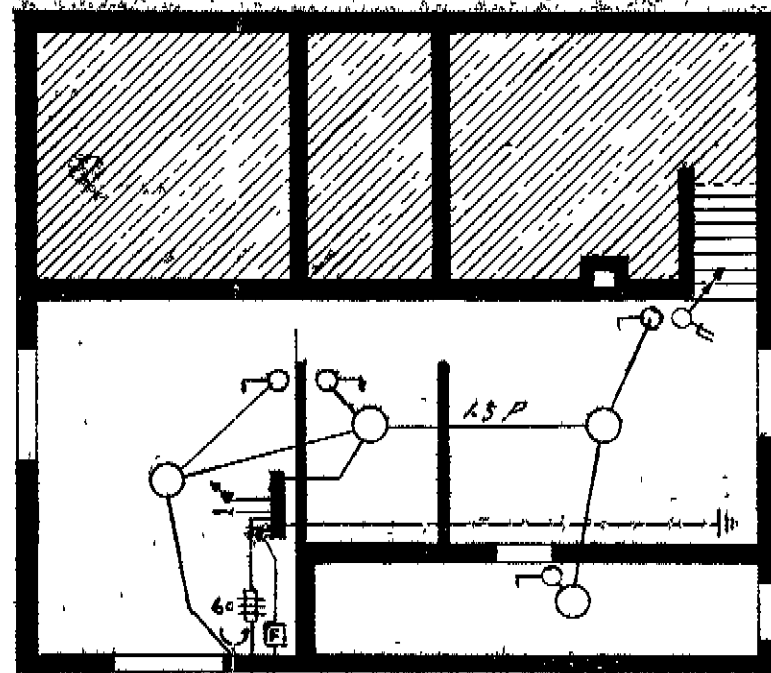
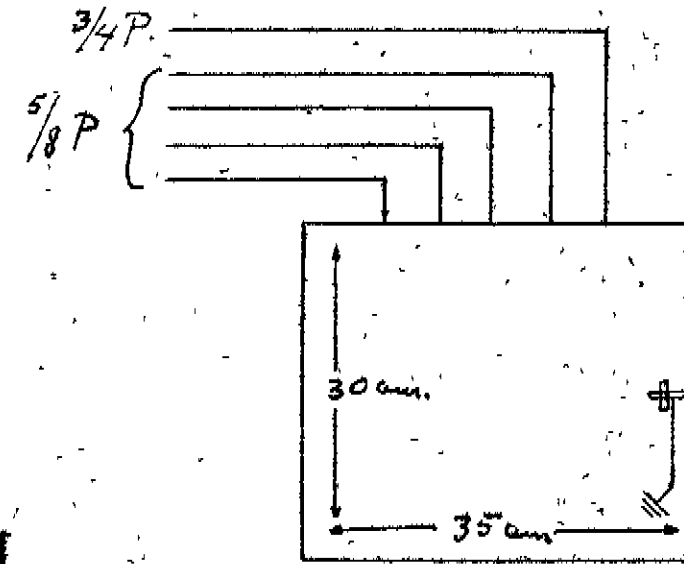


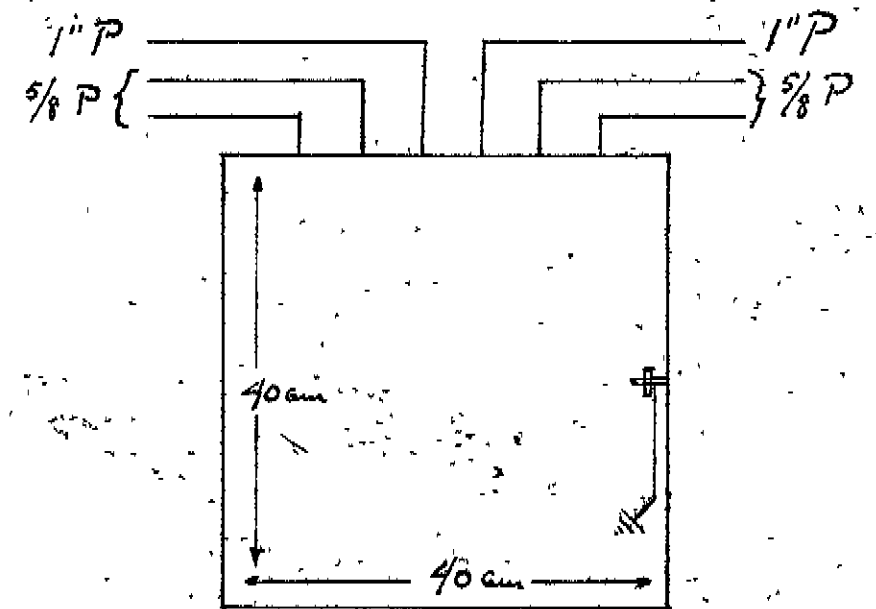
Hæð



Kjallari



Töflukassi



Töflukassi

Samt. p. 10/9/54  
Eyjafjarðarveita

|                                |   |
|--------------------------------|---|
| Rafloagn i Godabraut 20 Dalvik |   |
| Mál 1:100                      | Teikn. 12.5.54. <i>Eigandi</i> Anton Sigurjónsson |
| 3 Blöð                         |   |