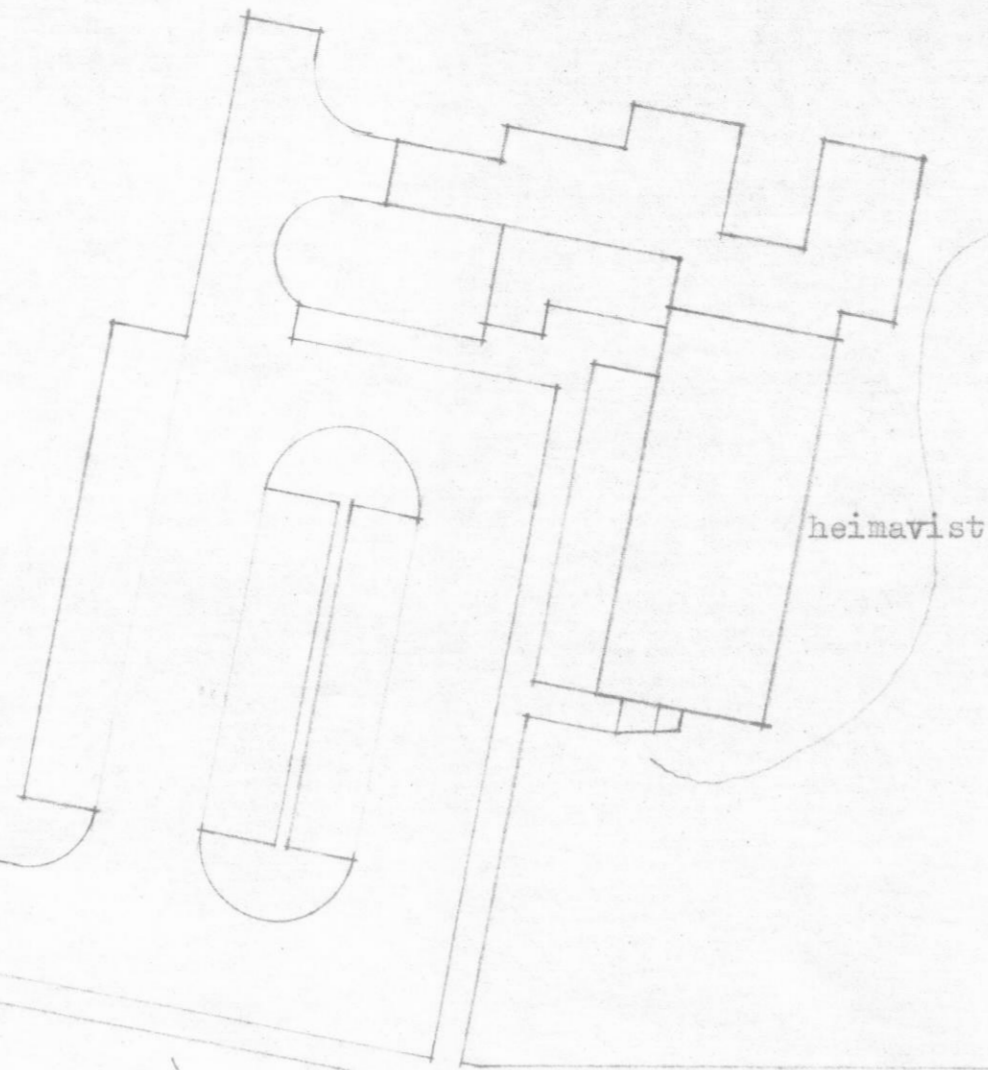
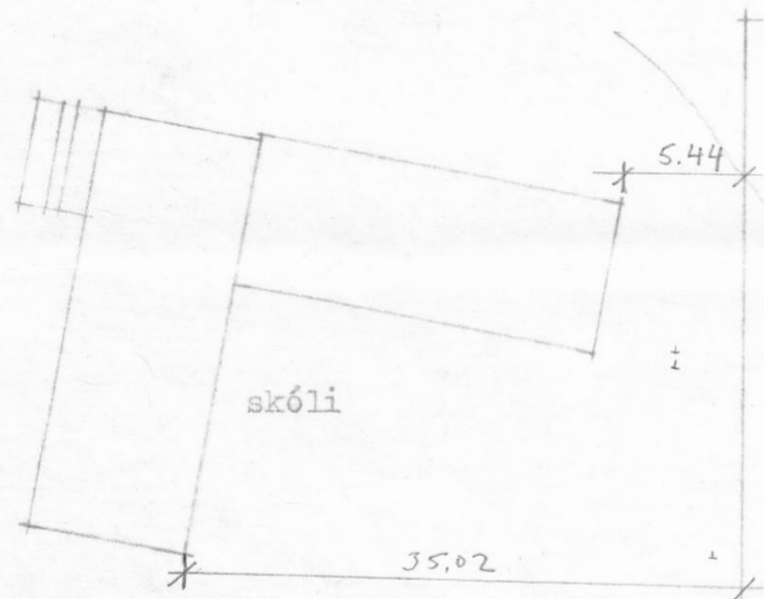


Vegamót



heimavist

Flatarmál 598.3 m²
Rúmmál 1852.6 m³

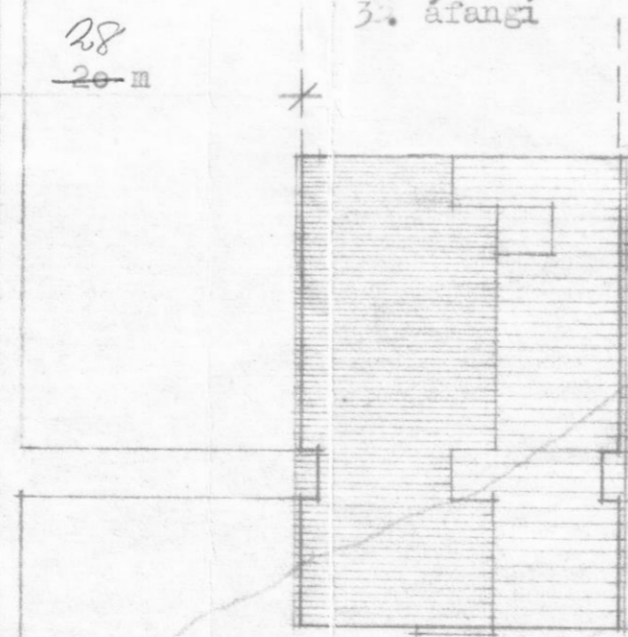


skóli

5.44

35.02

leiksvæði



3. áfangi

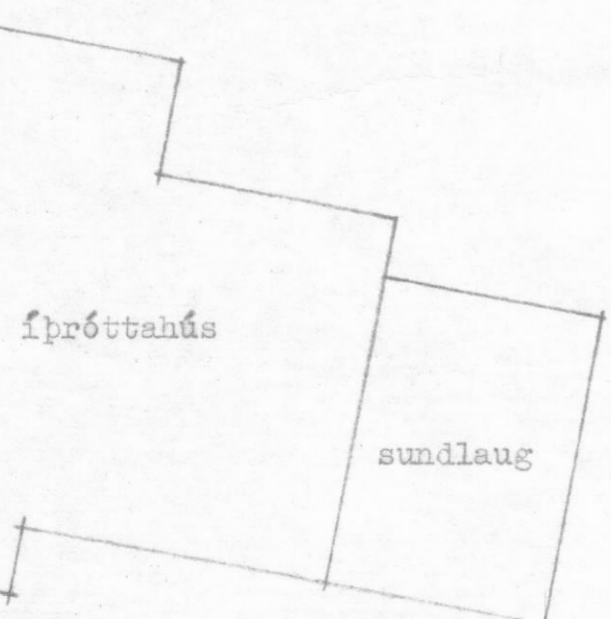
28

20m

2. áfangi

4. áfangi

leiksvæði



íþróttahús

sundlaug

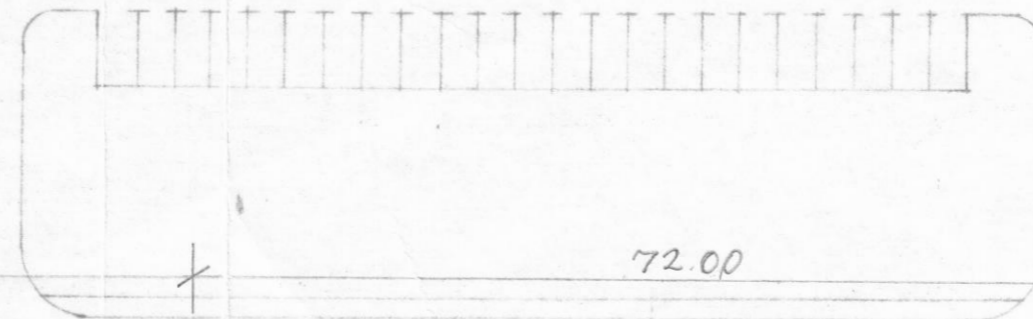
10.45

60

98.45

170.45

bílastæði



72.00

spennistöð

raðhús

Grunnskóli á Dalvík, 1. áfangi
Afstöðu mynd



KVARDI 1:100
DAGS. Okt 79
TEIKN. ásm
YFIRF.

M f m i s v e g u r

TEIKNISTOFA
KARL-ERIKS ROCKSÉN ARKITEKTS
SKIPHOLTÍ 1 - REYKJAVÍK - Sími 25240