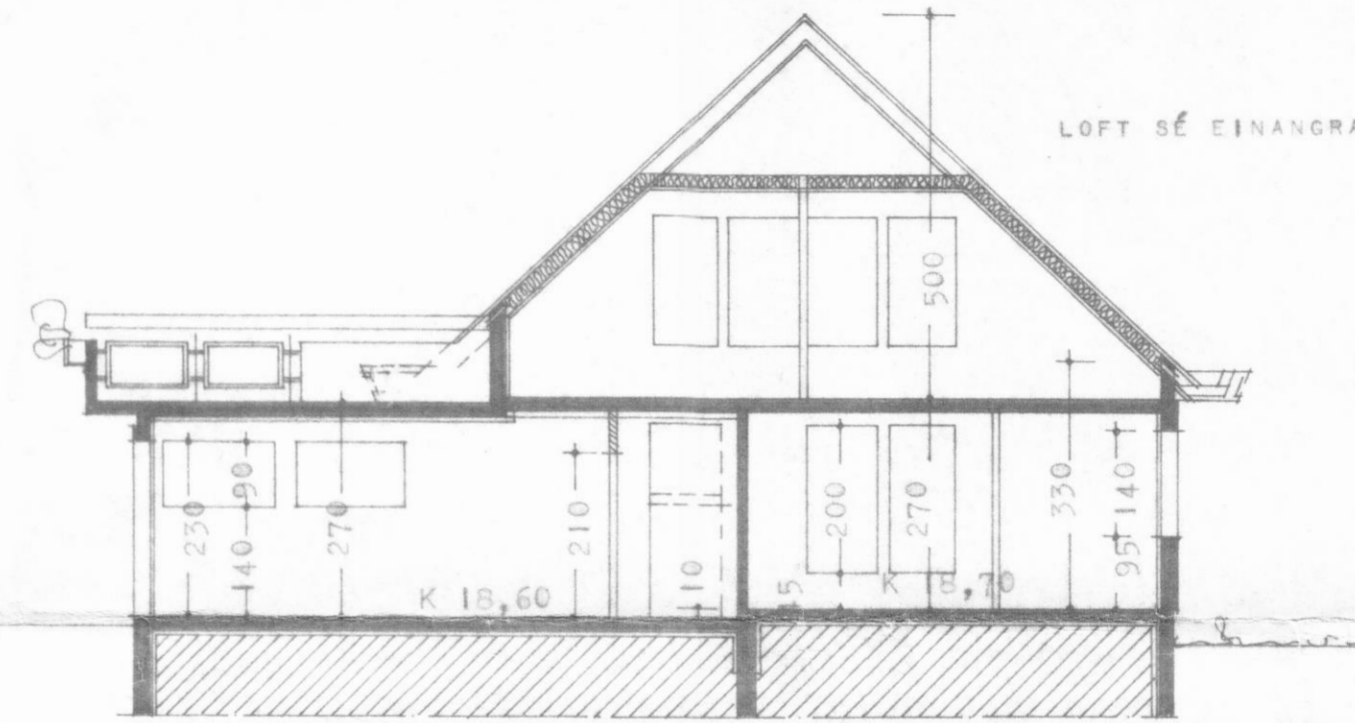
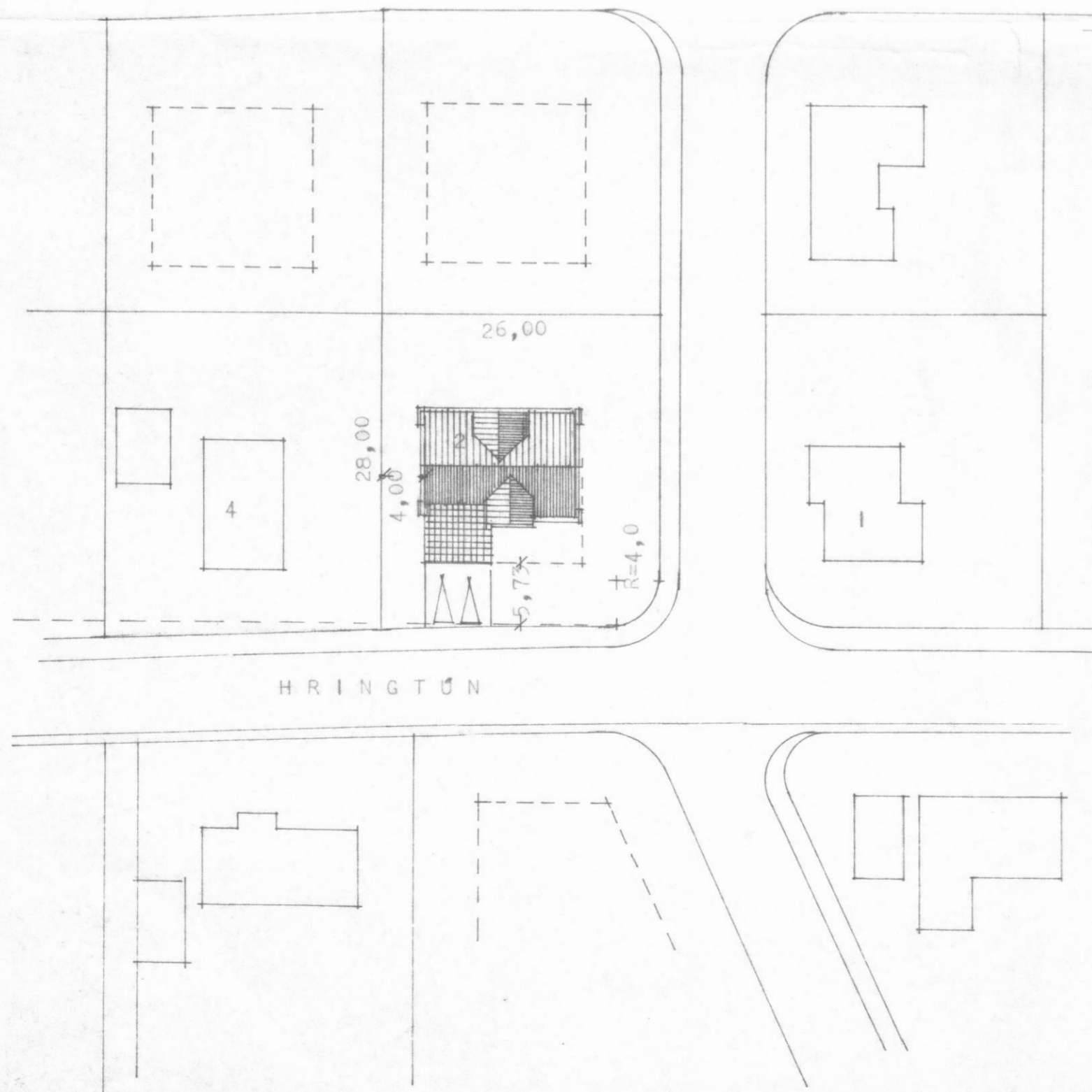


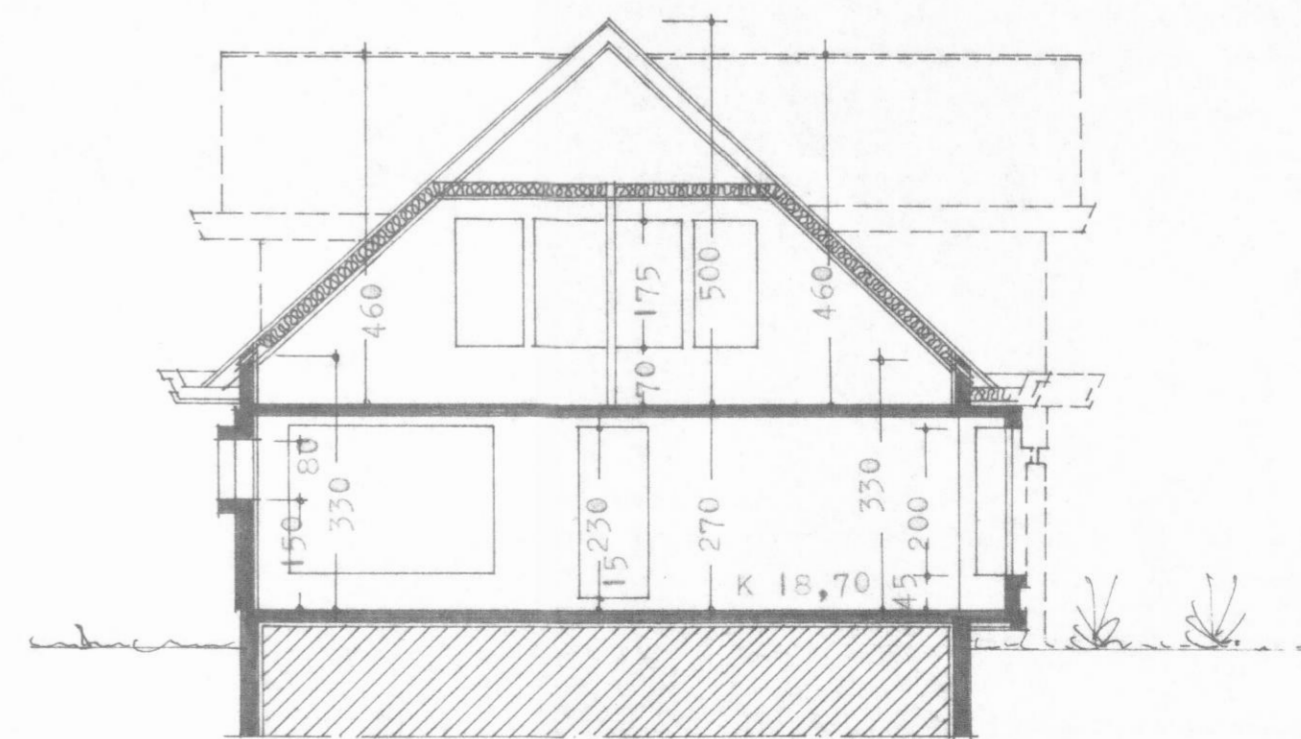
SMYÐVAÐI Í BYGGINGAHEF
10. júlí 1984
DALVIKUR

KÖLNUNARTÖLUR			
ÚTVEGGIR	0,95	m	/ m ² c ⁰
ÞAK	0,30	--	-- --
GÖLF	0,40	--	-- --
FLATARMÁL FÉÐÐAR Á 1. HÆÐ		113,20	m ²
BIFREIÐAGEYMSLU OG GEYMSLU		44,07	m ²
ALLS		157,27	m ²
FLATARMÁL ÞAKHÉÐAR (LOFTHÆÐ MEIRI EN 1,8M)		107,16	m ²
RÚMMÁL HÚSS ALLS		835,68	m ³

AFSTÖÐUMYND M 1:500



SKURÐUR A - A



SKURÐUR B - B