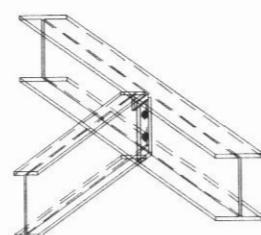
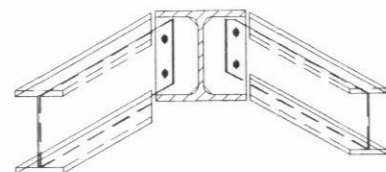
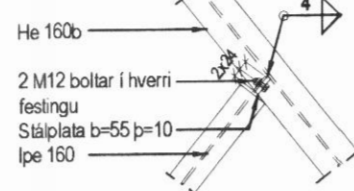


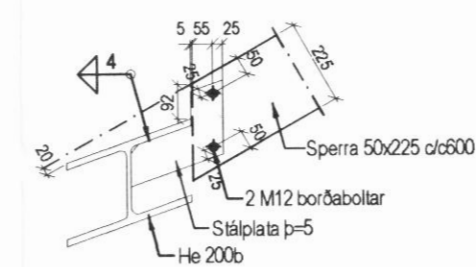
Bitakroppar eru lóðréttir



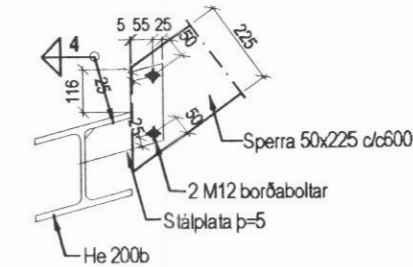
Bitakroppar eru lóðréttir



Fjarlægð bolta frá kanti skal ekki vera minni en 24mm

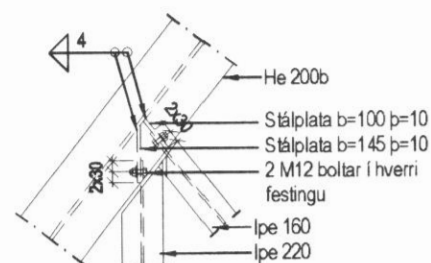


Snið E1 1:20



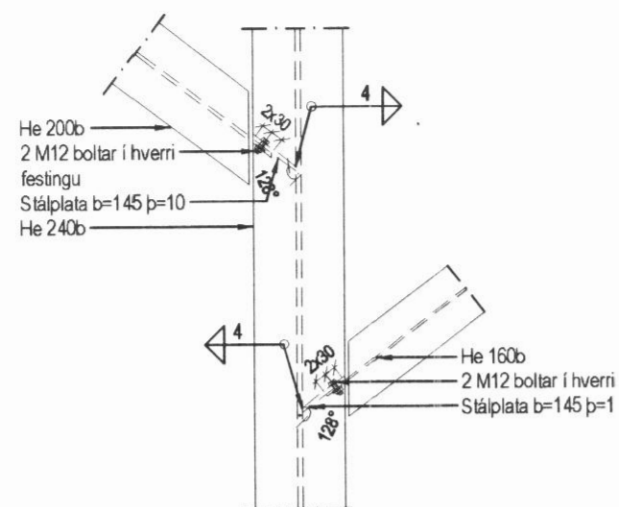
Snið E2 1:20

Bitakroppar eru lóðréttir



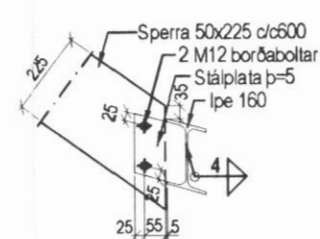
Fjarlægð bolta frá kanti skal ekki vera minni en 24mm

Deili D1 1:20

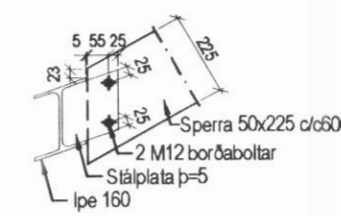


Fjarlægð bolta frá kanti skal ekki vera minni en 24mm

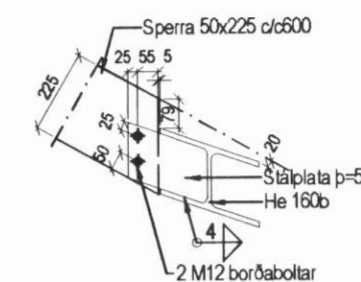
Deili D2 1:20



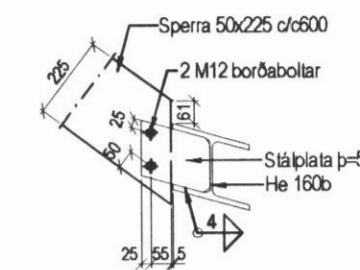
Snið E3 1:20



Snið E4 1:20

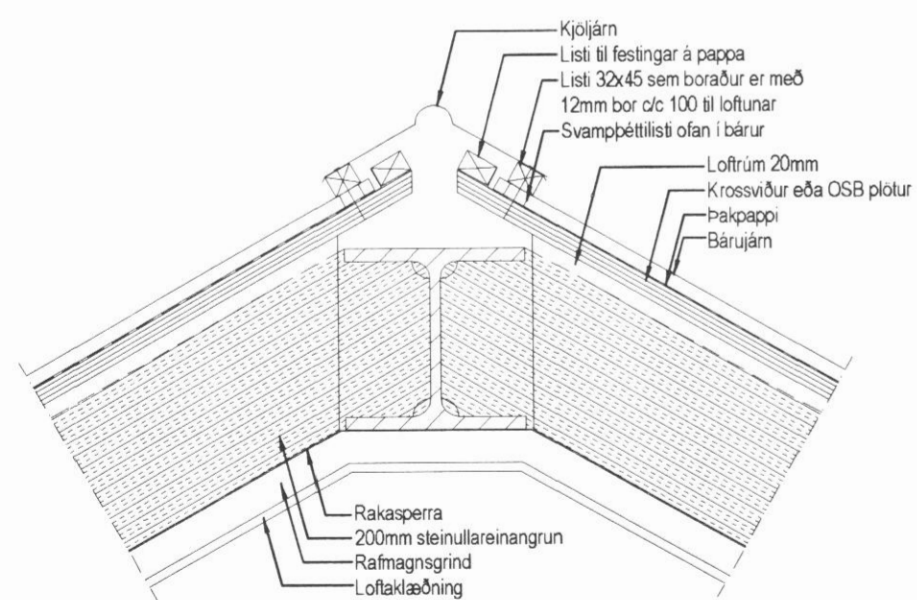


Snið E5 1:20



Snið E6 1:20

Deili D3 1:20



Uppbygging þaks og loftun í mæni

Skýringar

Öll mál og allir kótar eru í millimetrum
Þar sem byggt er við núverandi hús, skal yfirfara öll mál á byggingarstað

Tilvísanir

Almennar skýringar B1

BYGGINGAÞJÓNUSTA BÆNDASAMTAKA ÍSLANDS BÆNDAHÖLLINI, HAGATORGI, REYKJAVÍK sími: 5630300 Melar í Svarfaðardal Íbúðarhús - Viðbygging Burðarvirki, þakvirki, snið og deili	Verk nr: 0851-09
	Blað nr: B-5
	Mkv: 1:50 og 1:20
	Dags: 05.08.2004
	Breytt:
Hannað: SB Teiknað: SB	