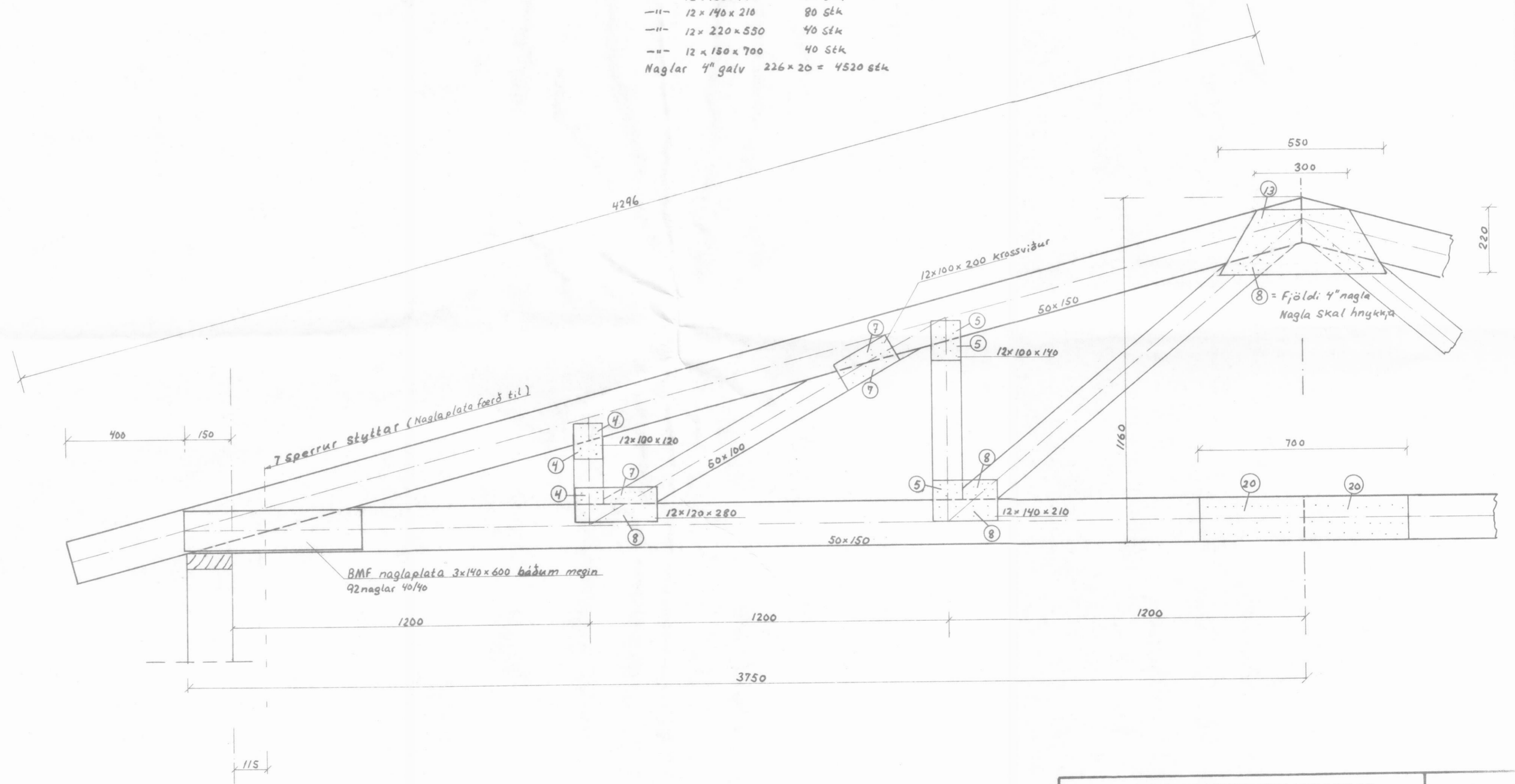


Hönnunarálag er snjóálag 240 kg/m²

Efnislisti

- Sperrur 20Stk (par af 7 stytta)
- BMF 3x140x600 80 Stk
- Naglar 40/40 46x80 = 3680 Stk
- Laski 12x100x120 80 Stk
- "- 12x120x280 80 Stk
- "- 12x100x200 80 Stk
- "- 12x100x140 80 Stk
- "- 12x140x210 80 Stk
- "- 12x220x550 40 Stk
- "- 12x150x700 40 Stk
- Naglar 4" galv 226x20 = 4520 Stk



Nr.	Dags.	Breyting	Af	Samb.

VERKFRÆDISTOFA SIGLUFJARÐAR	BLAD 4
YTRA GARÐSHORN SVARFARÐARÐALSHR.	KVARDI 1:10
KRAFTSPERRA	Dags. Júní '87
	Reikn. Þ.J.
	Teikn. Þ.J.
	Nr. 87049

Þorlínur Þorlínsson