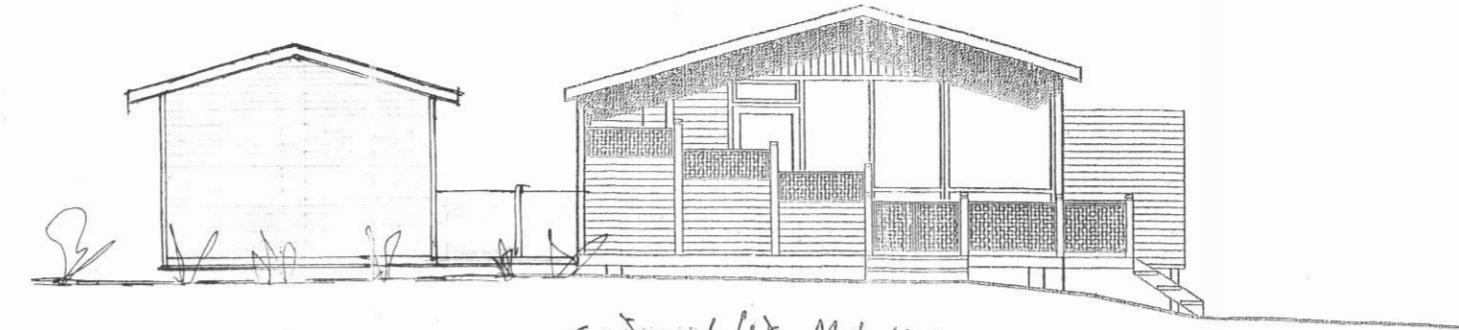
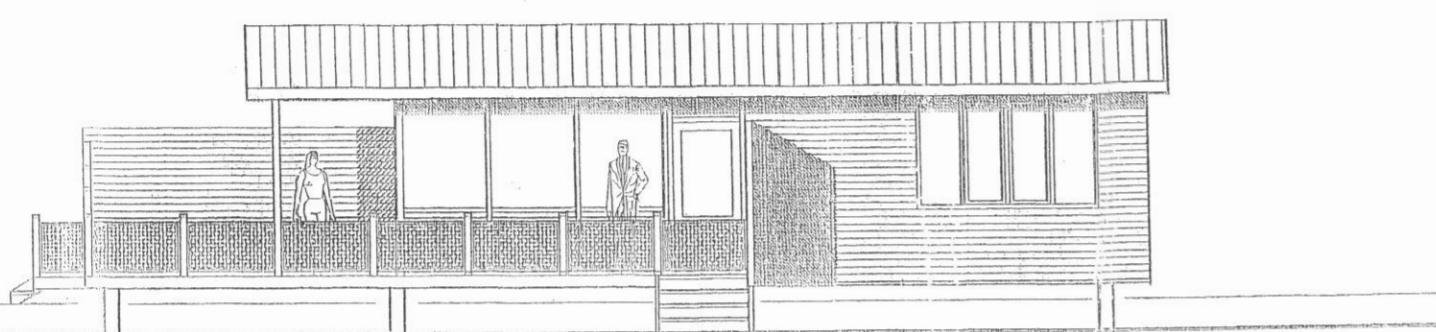


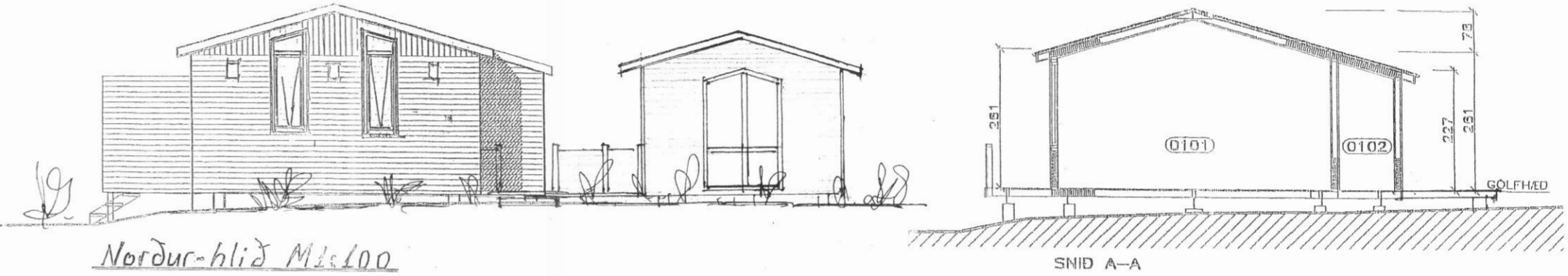
Vestur-hlið M 1:100 *úlinar gestahúss*



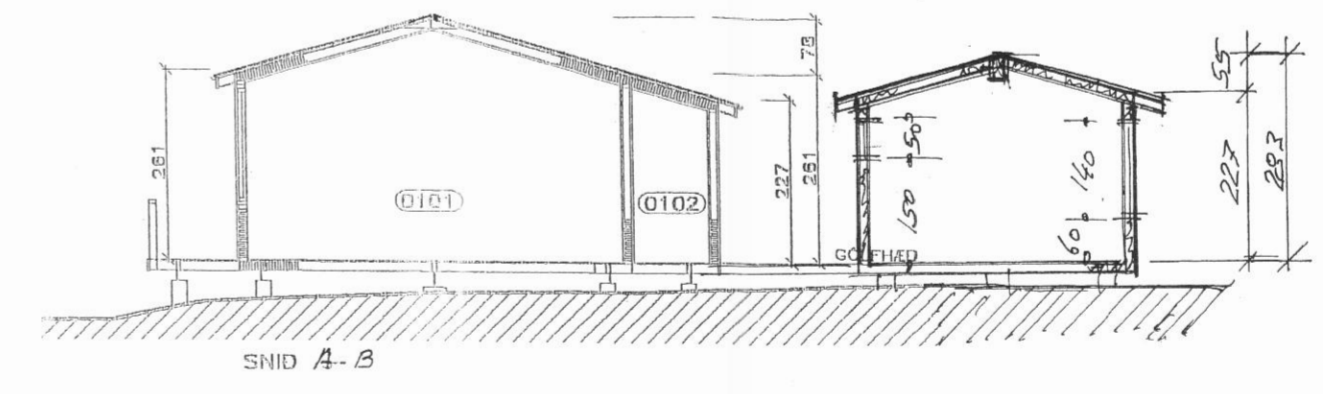
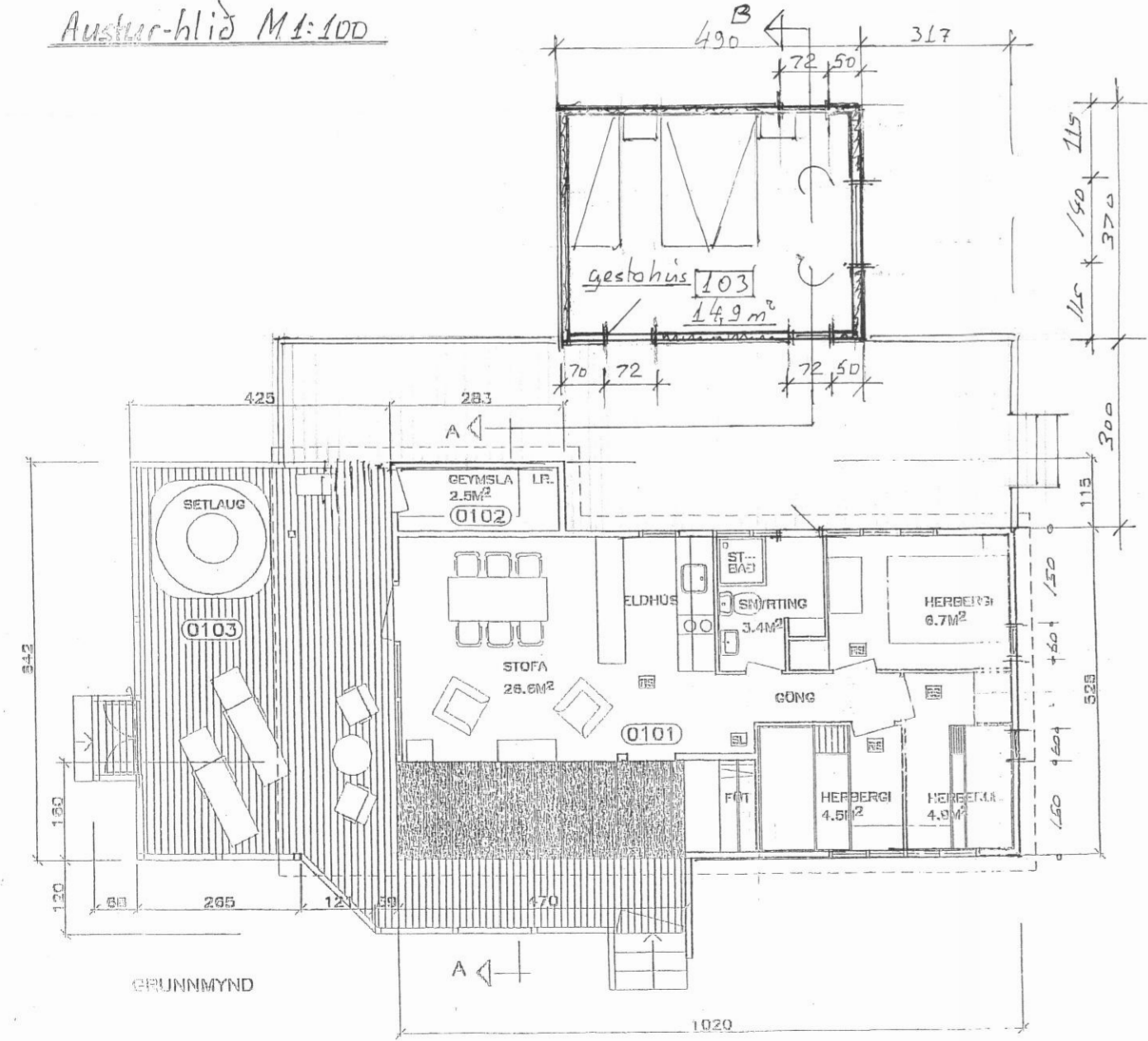
Súður-hlið M 1:100



Austur-hlið M 1:100



Norður-hlið M 1:100



Gestahúss 18,1 m² og 45,6 m³
Heildarflatarmál gestah. 75,2 m²

FLARARMÁL	SUMARHÚSS	49,6 M ²
FLARARMÁL	STÆKKUN	7,5 M ²
	SAMTALS:	57,1 M ²
RÚMMÁL	EFTIR STÆKKUN	169,8 M ³
SKÝRINGAR:		
RS.	TÁKNAR REYKSKYNJARA	
SL.	TÁKNAR SLÖKKVIÐEKI	
FRÁGANGUR SETLAUGAR SAMKVÆMT GILDANDI REGLUGERD.		

Gerl sam kv. frumlei kn. Níju Teiknstofnunar
 frá 18-10-2001

Teikn. brætt v. gestahúss í maí 2011 *Sigrún Þorjónsdóttir MVEI*
Sigrún Þorjónsdóttir MVEI 101039-4049

Fristundahús Hamri við Dalvík B4	
Grunnmynd útlit. snið	M 1:100
At. 5-2-2009	<i>Sigrún Þorjónsdóttir MVEI</i>