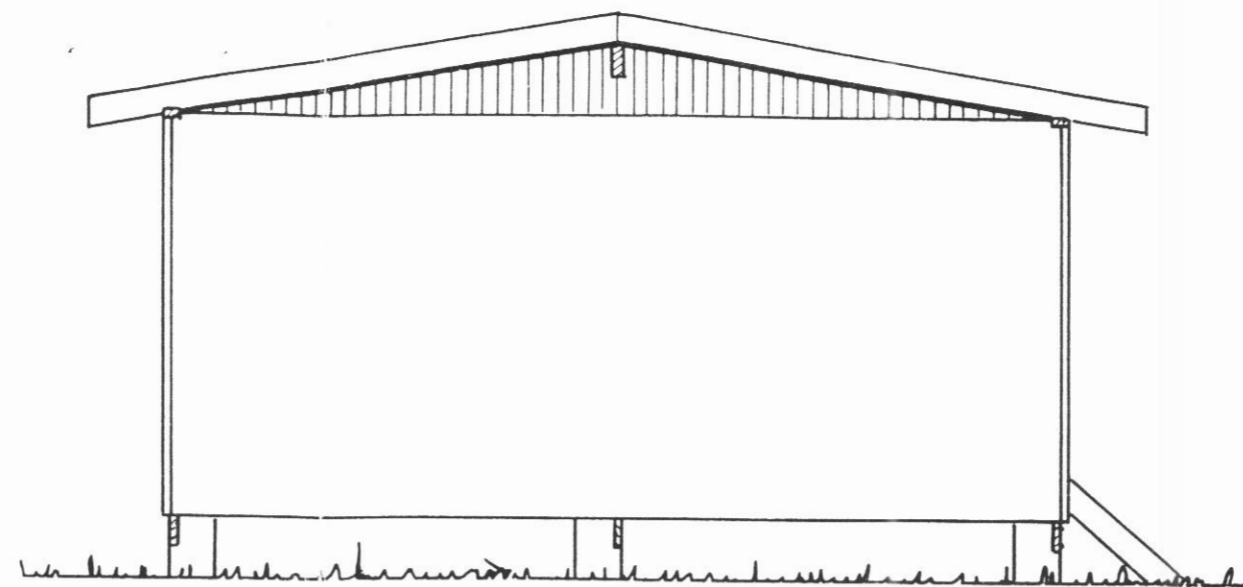
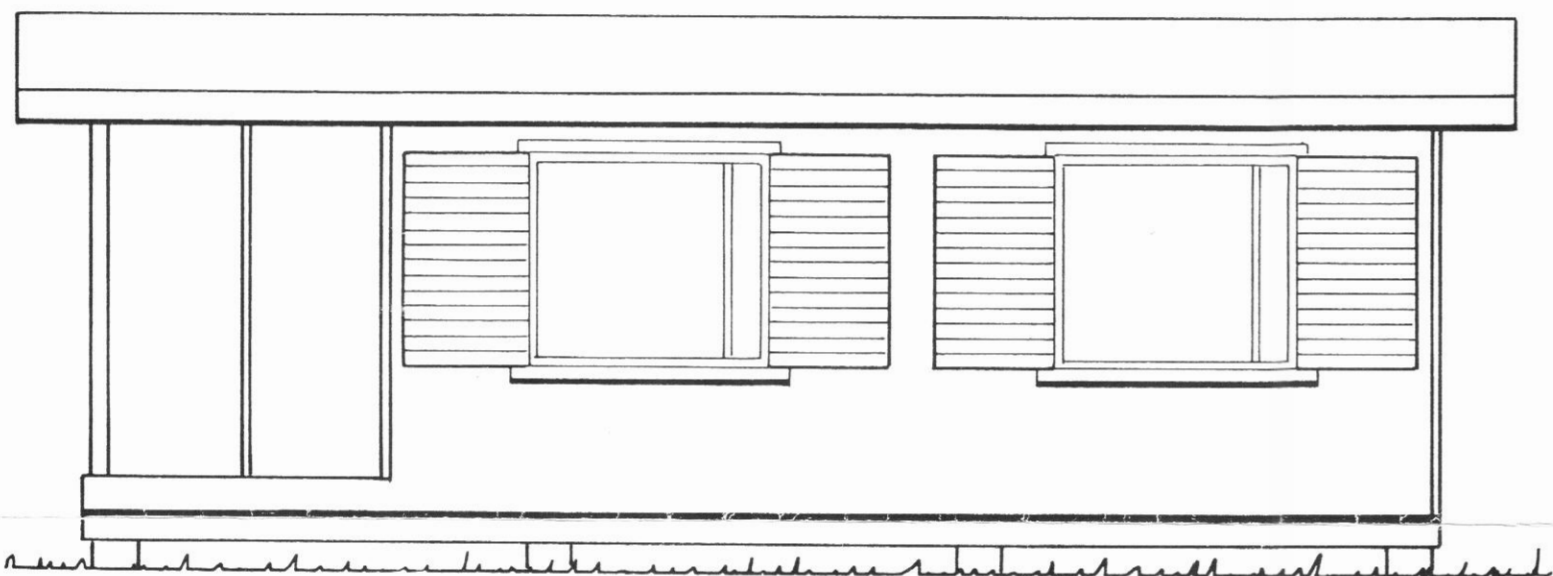


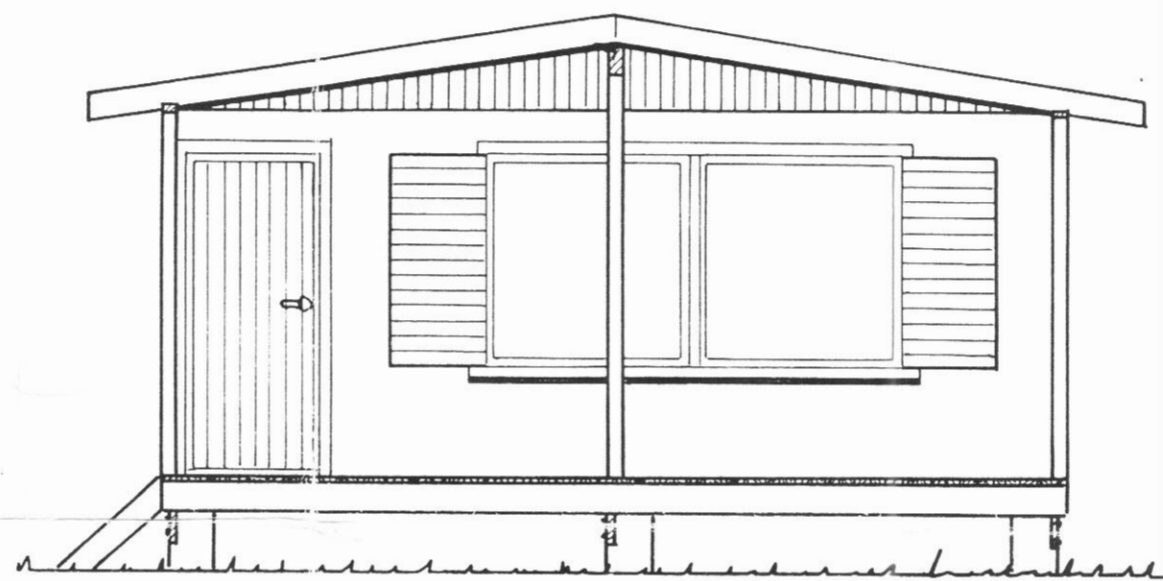
Vestur



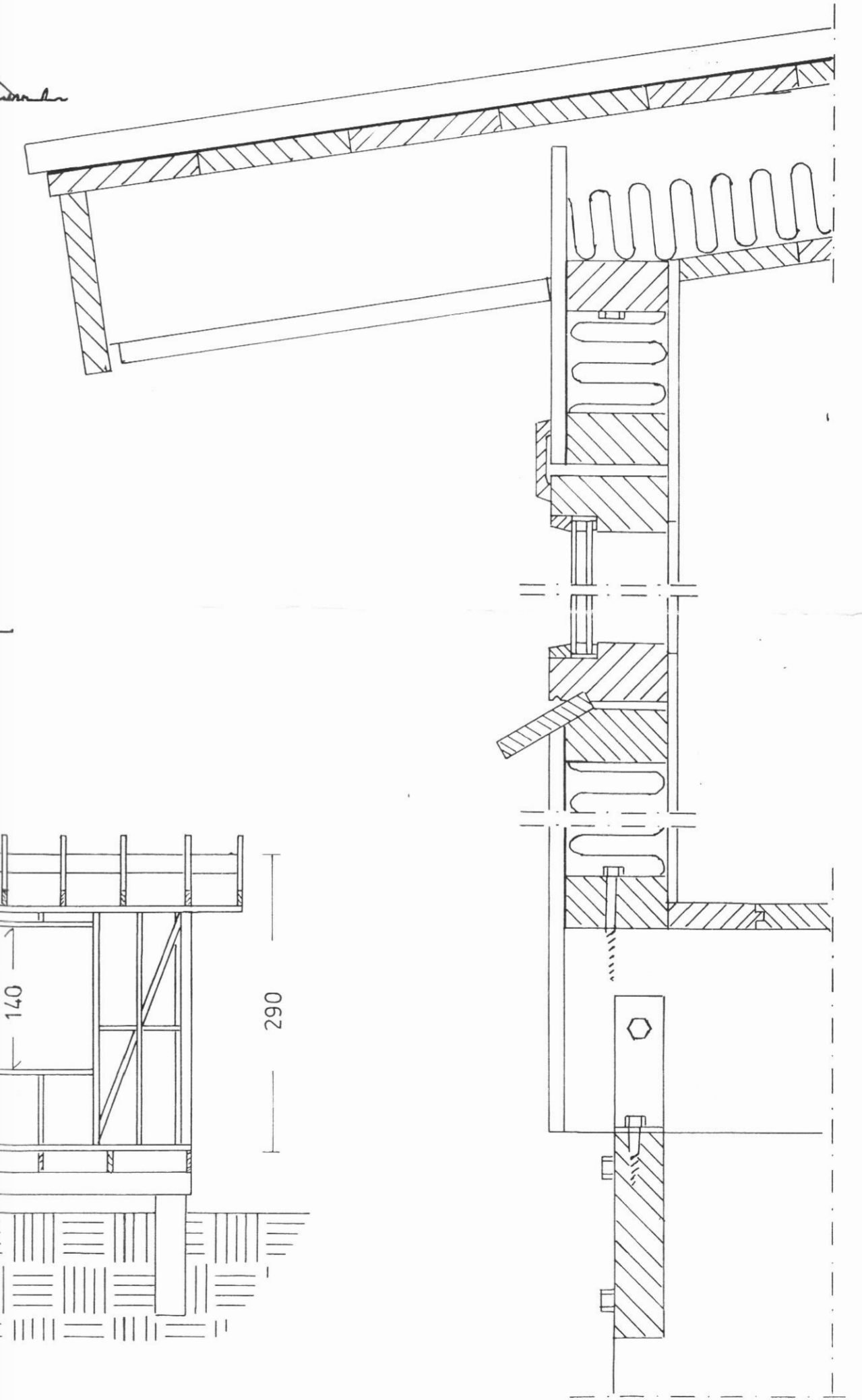
Nordur



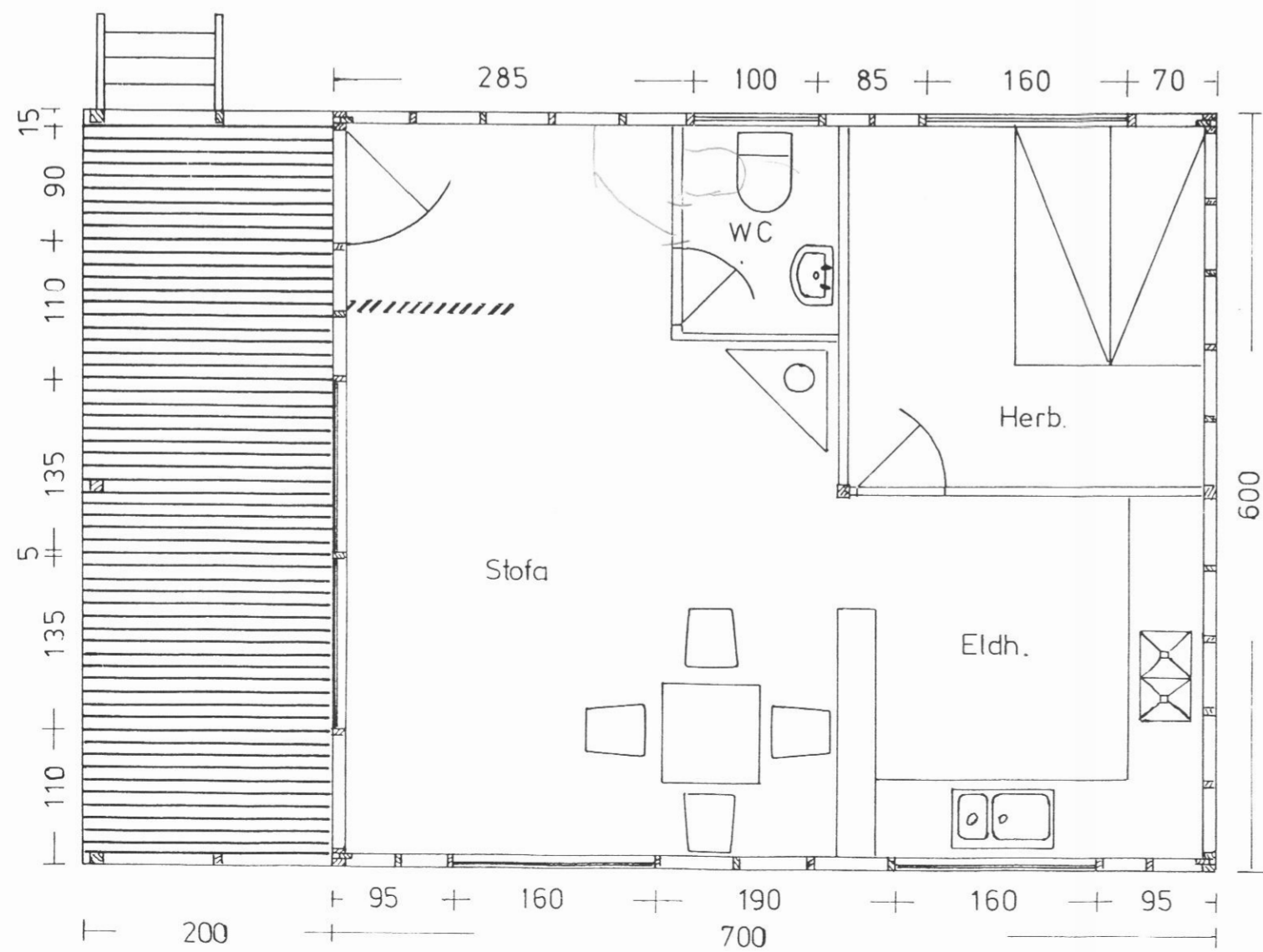
Austur



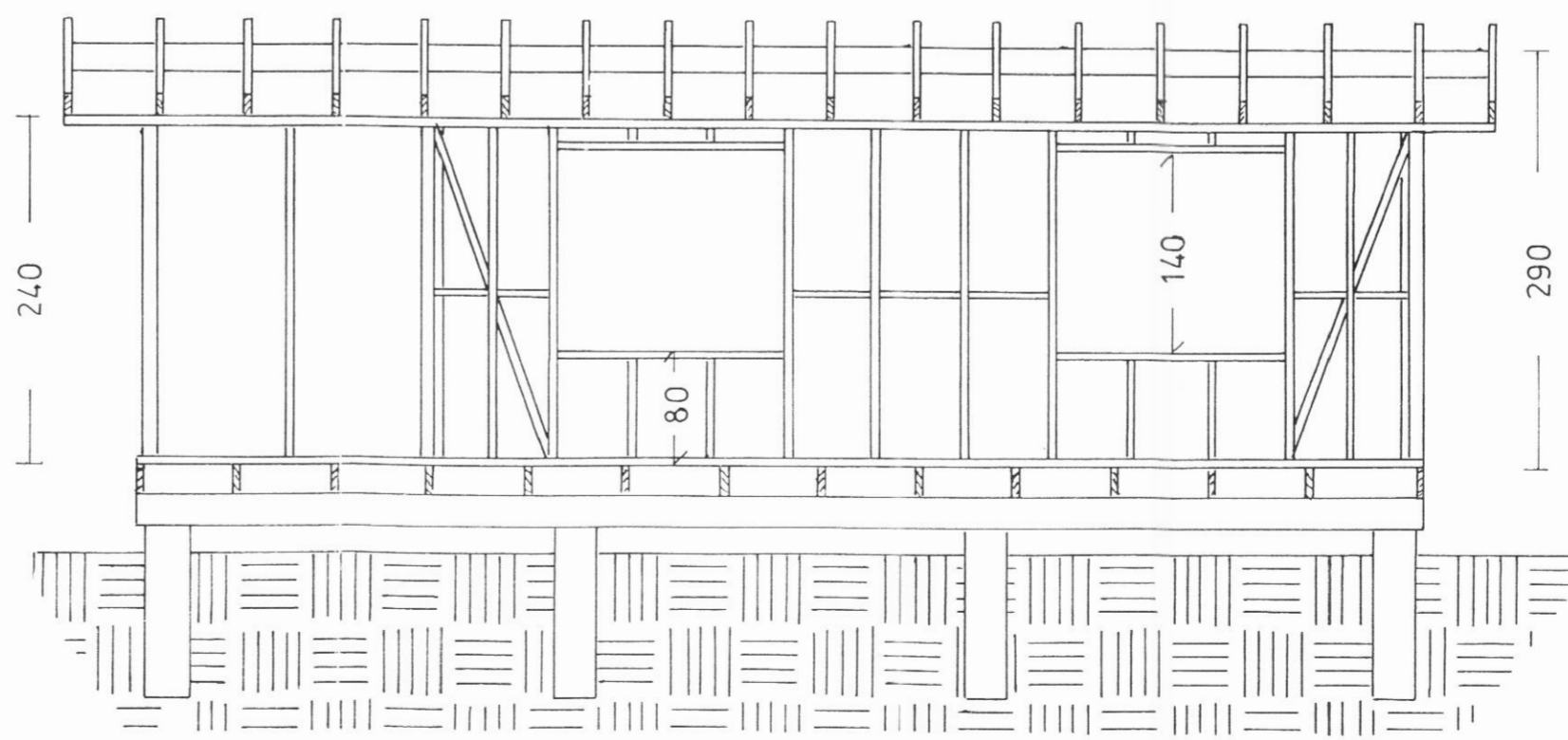
Suður



Þverskurður af grind.
Mkv. 1:5



Grunnmynd



Langskurður af grind.

Flatarmál: 42 m²
Rúmmál: 117,6 m³

Sumarbústaður á býlinu Holti Dalvík
Grunnmynd, útlitsmynd og skurður. Mkv. 1:50 og 1:5
Febrúar 1978
Óskar Palmaason