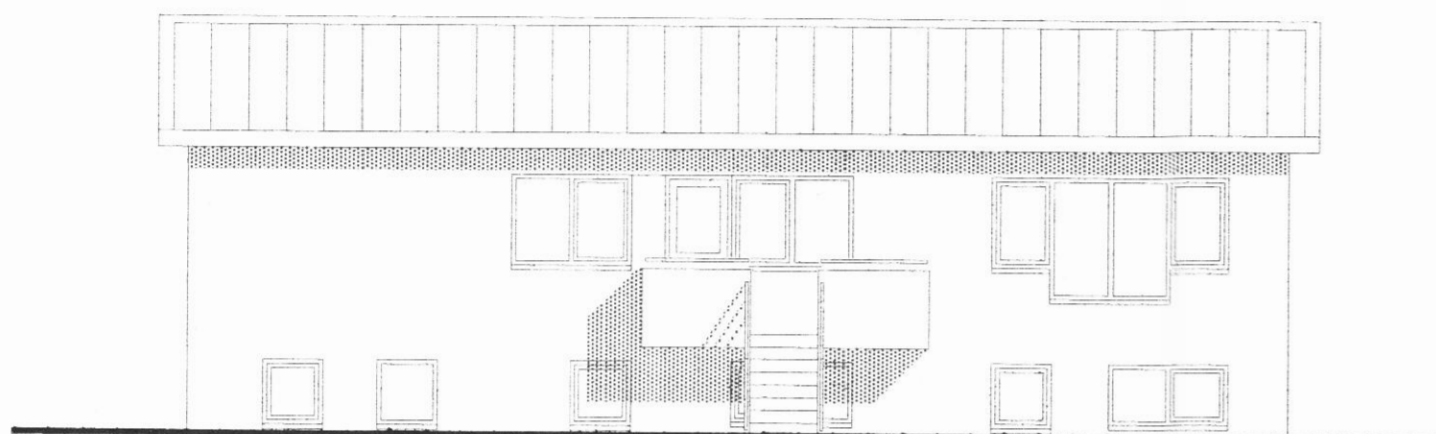
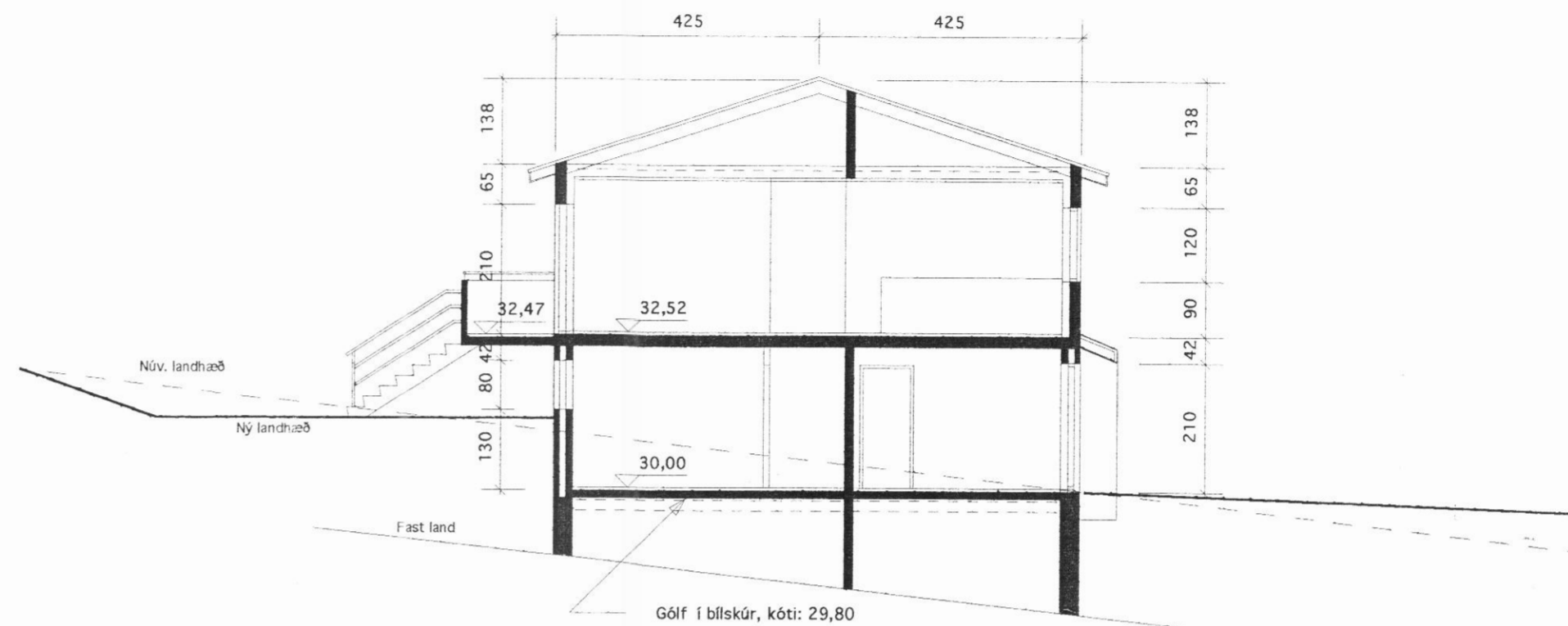


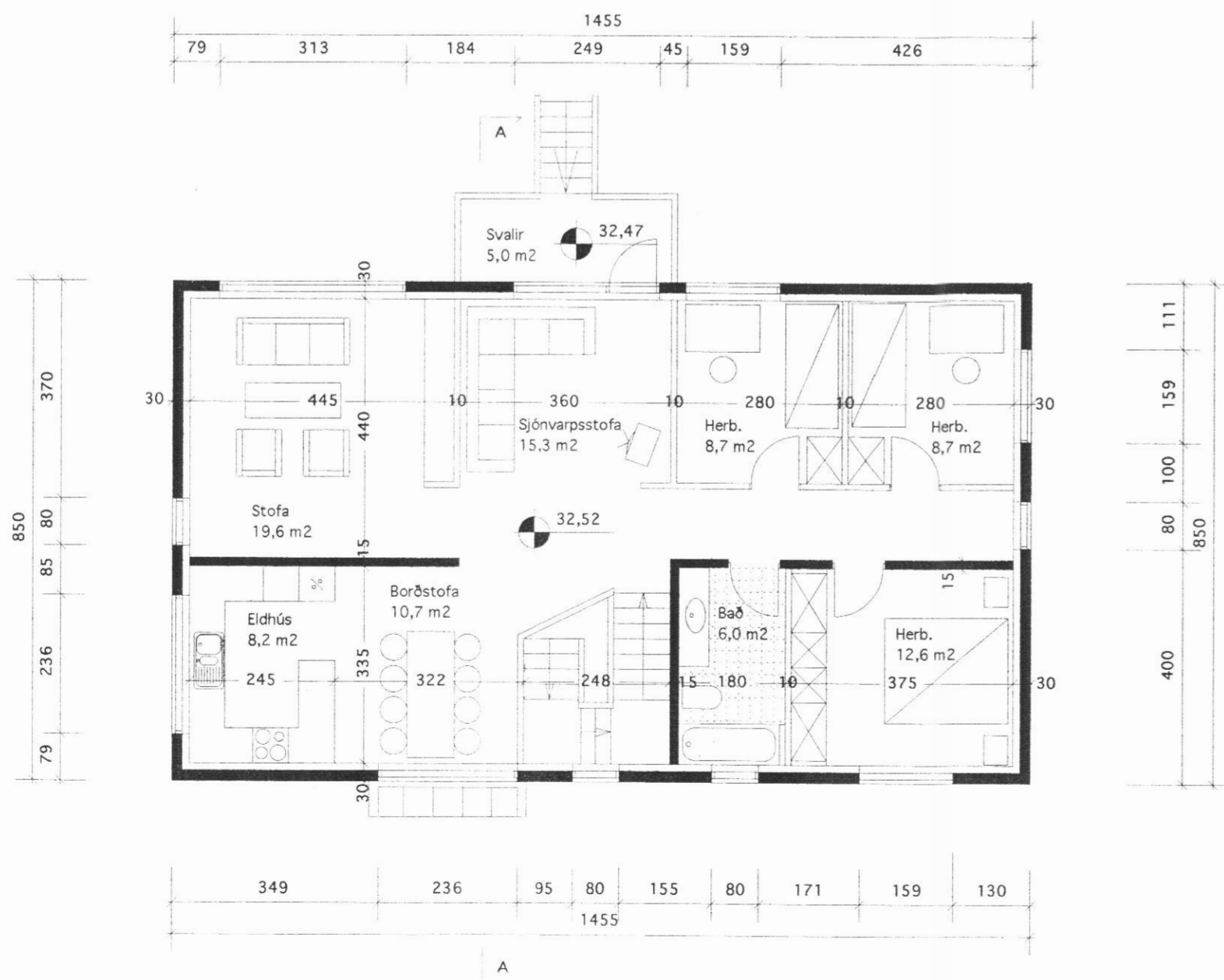
SUDURHLIÐ



VESTURHLIÐ



PVERSNIÐ A - A



GRUNNMYND EFRI HÆÐAR  
Mkv. 1:100



NORÐURHLIÐ

GRUND SVARFAÐARDAL  
Íbúðarhús

Mkv. 1:100 Dags. 10.7.1994 Aðaltekning nr. 2 af 2

HELGI MÁR HALLDÓRSSON  
Helgi Már Halldórsson arkitekt faí  
Hraunbæ 192 Reykjavík s. 91-67 31 92