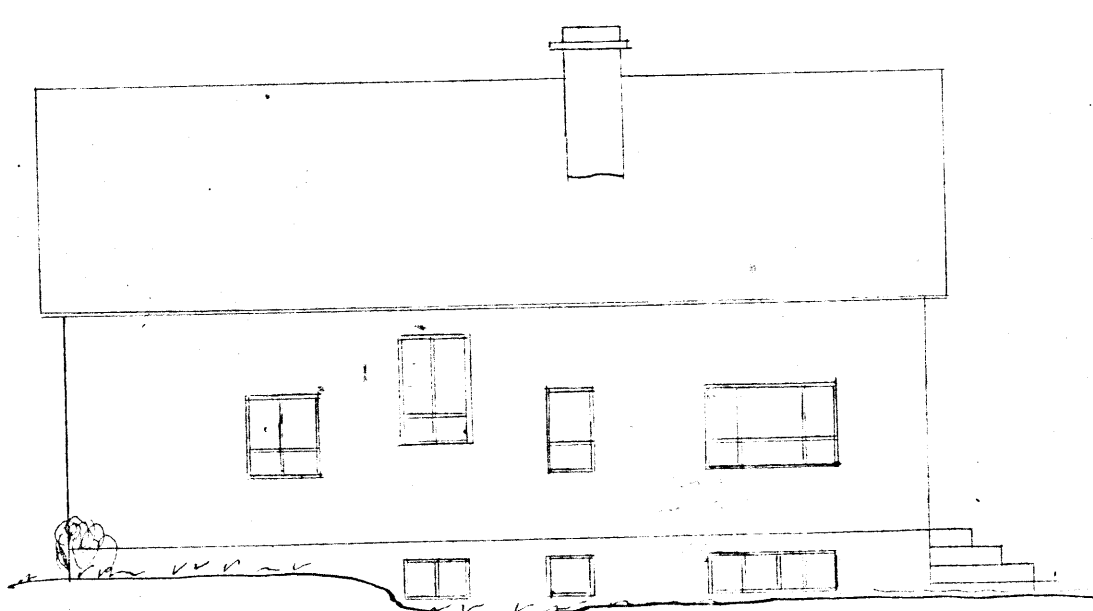
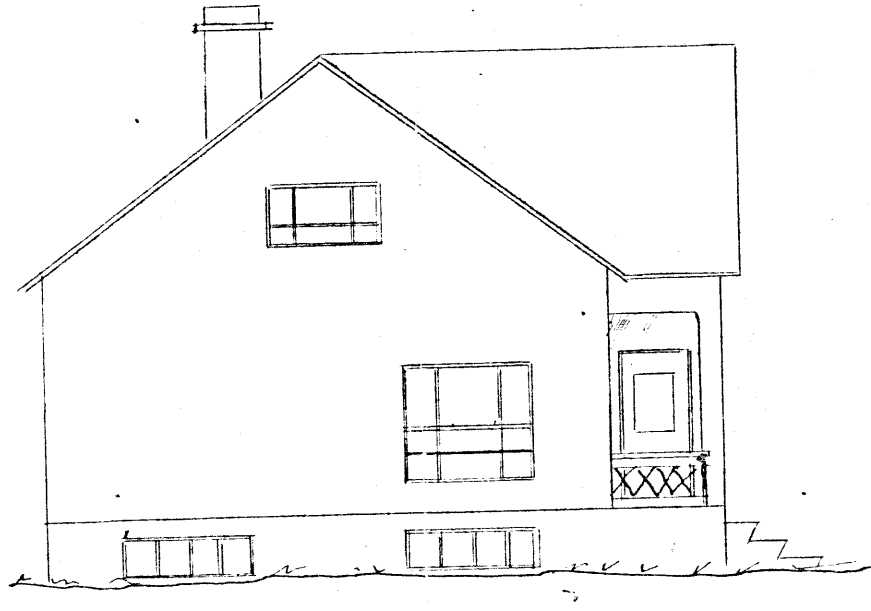


Sveitarstjórnir  
 Vestmannaeyja  
 Dalvík

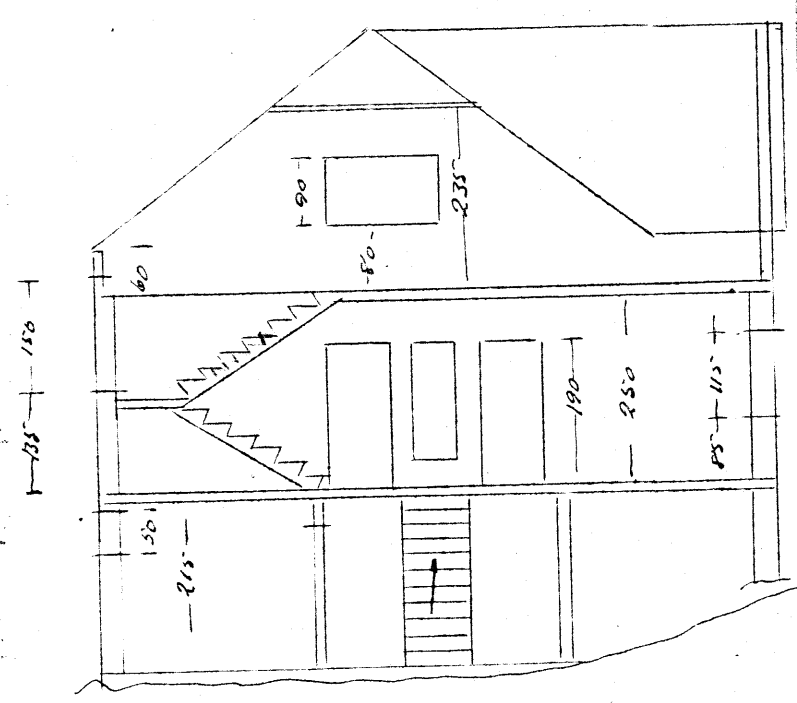
186-1950



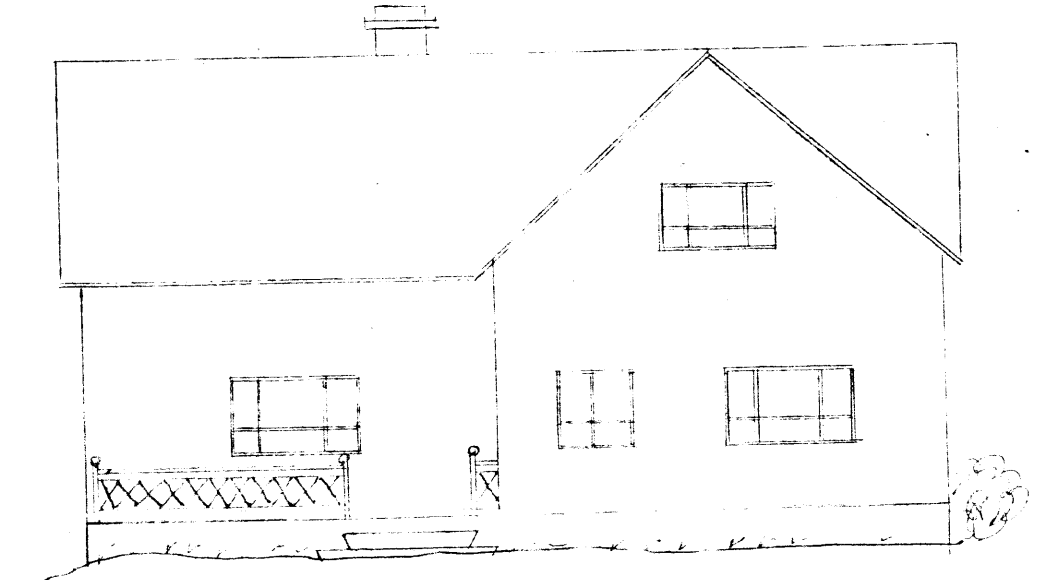
Sudur



Austur



Skurdura-a



Nordur

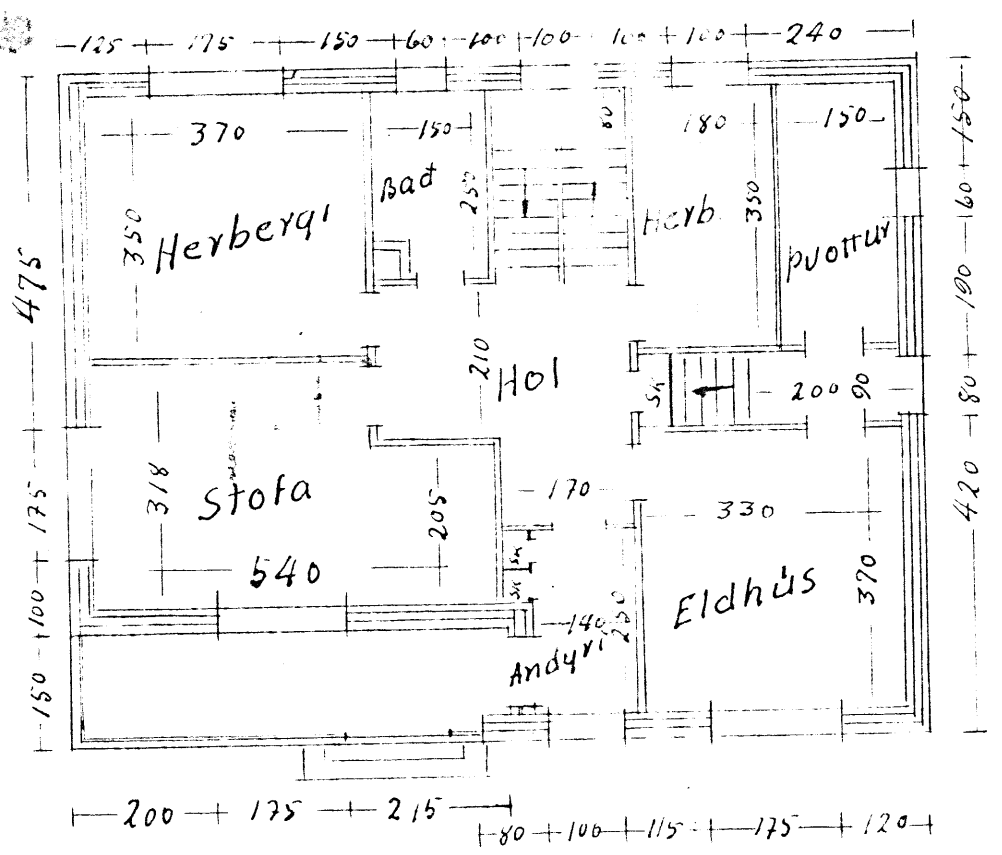


Vestur

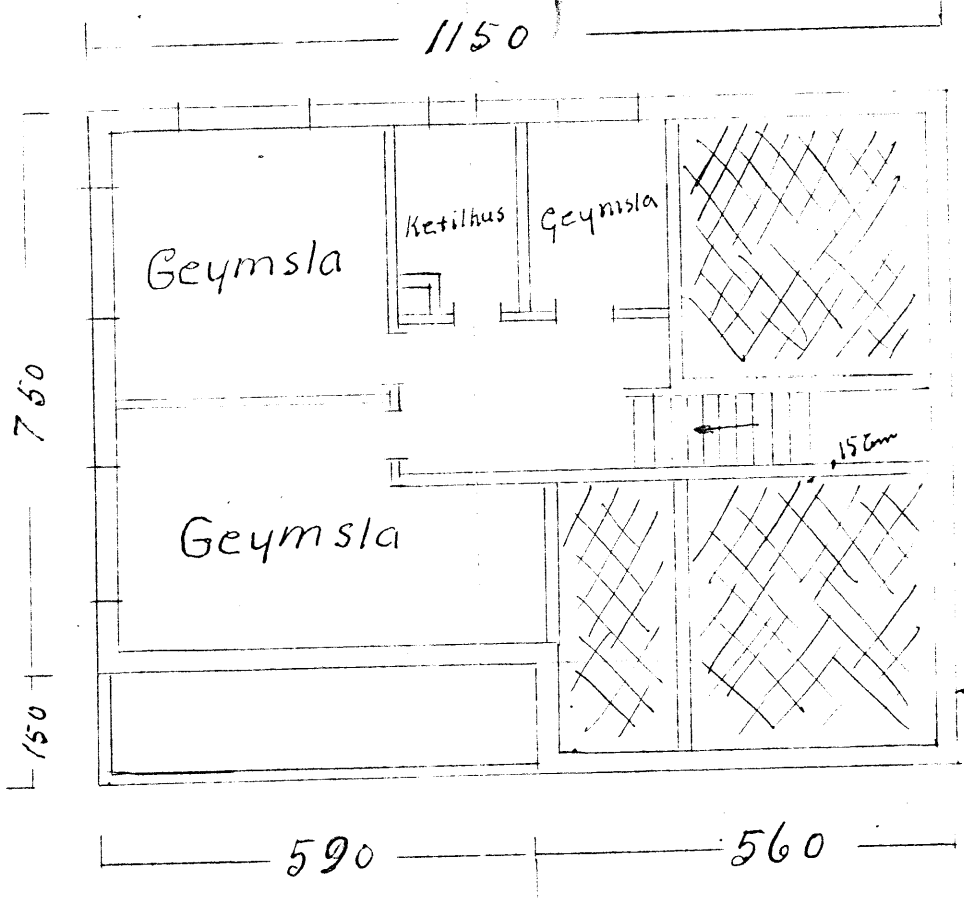
Ibúðarhús. Eiss 75.6m<sup>2</sup> 189.2m<sup>3</sup>  
 Kristins Jónssonar Hæð 94.6m<sup>2</sup> 255.4m<sup>3</sup>  
 Dalvík A. 53.7m<sup>2</sup> 126.3m<sup>3</sup>  
571m<sup>3</sup>

Mal=1:100

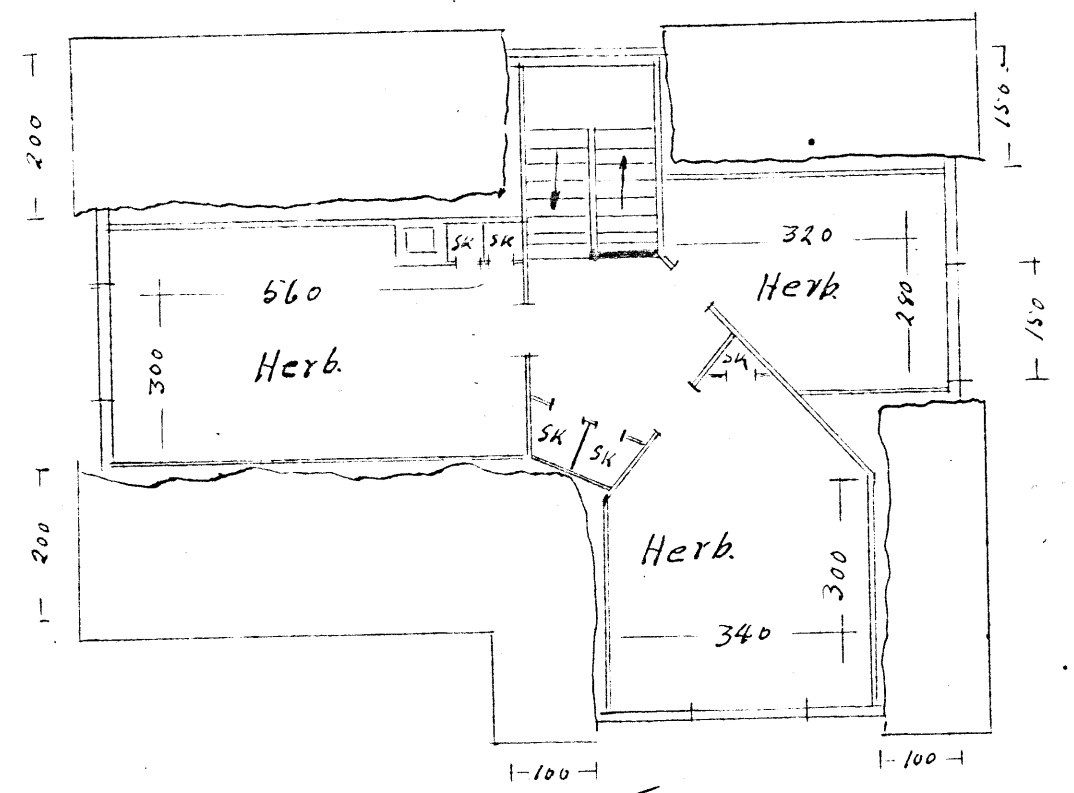
Ath.  
 Í stiga uppá ris, skal uppstigi vera 18cm  
 en framstigi 24  
 Í kjallarastiga skulu framstigi og  
 uppstigi vera 20cm  
 Ris er 280cm



Hæð



Grunnur



RIS HÖLAVEGUR 3.

Dalvík 20/3 '56.  
 Inga Jónsson