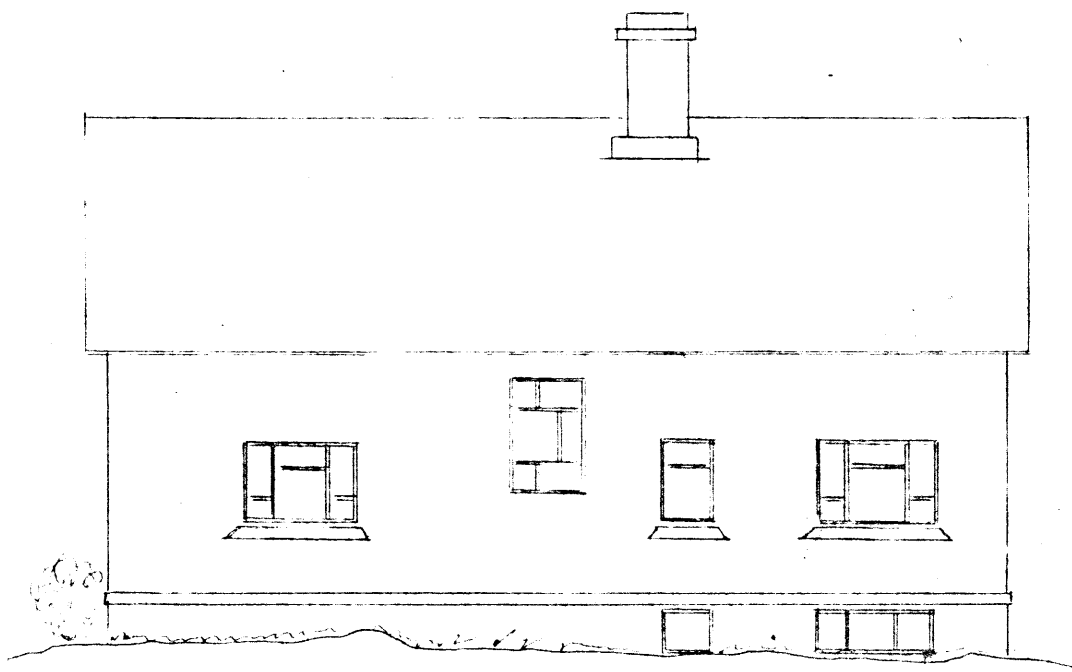
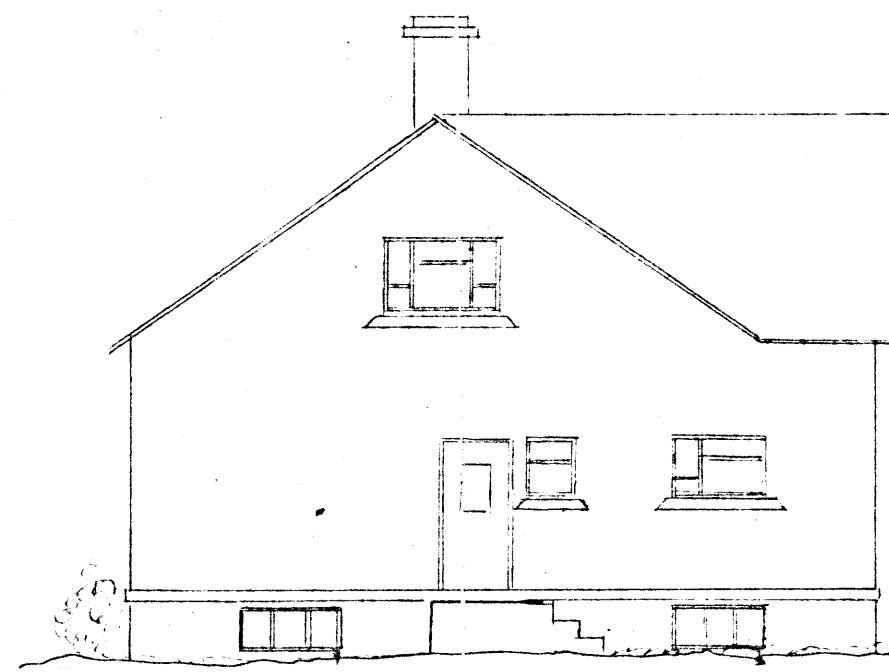


Port 60cm. Rís 290



Sudlæg hlid

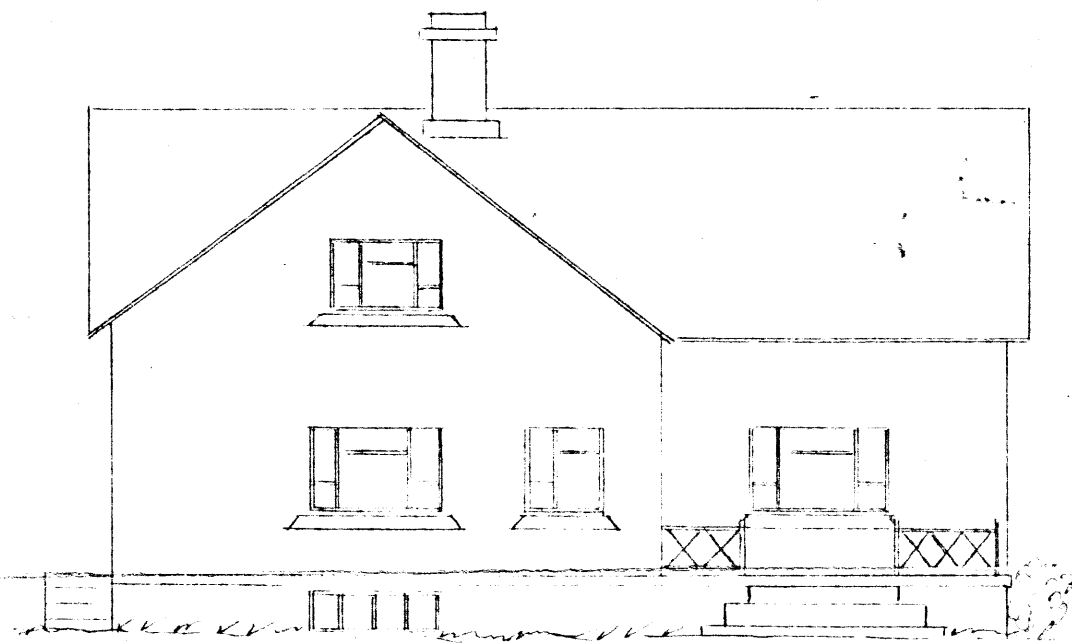


Austlæg hlid

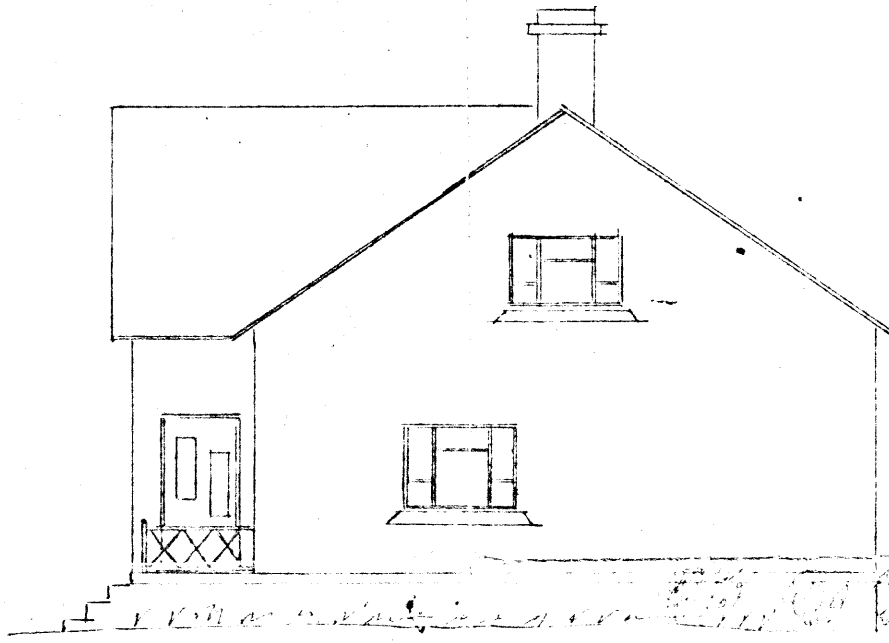
Eis  $51.8m^2$  230.8  
 - loft  $112.6m^2$  304.0  $m^3$   
 • Afellari  $50.0m^2$  120.0  $m^3$   
655  $m^3$

Ingólfr Jónsson  
 Byggingarvæðing  
 Dalvík

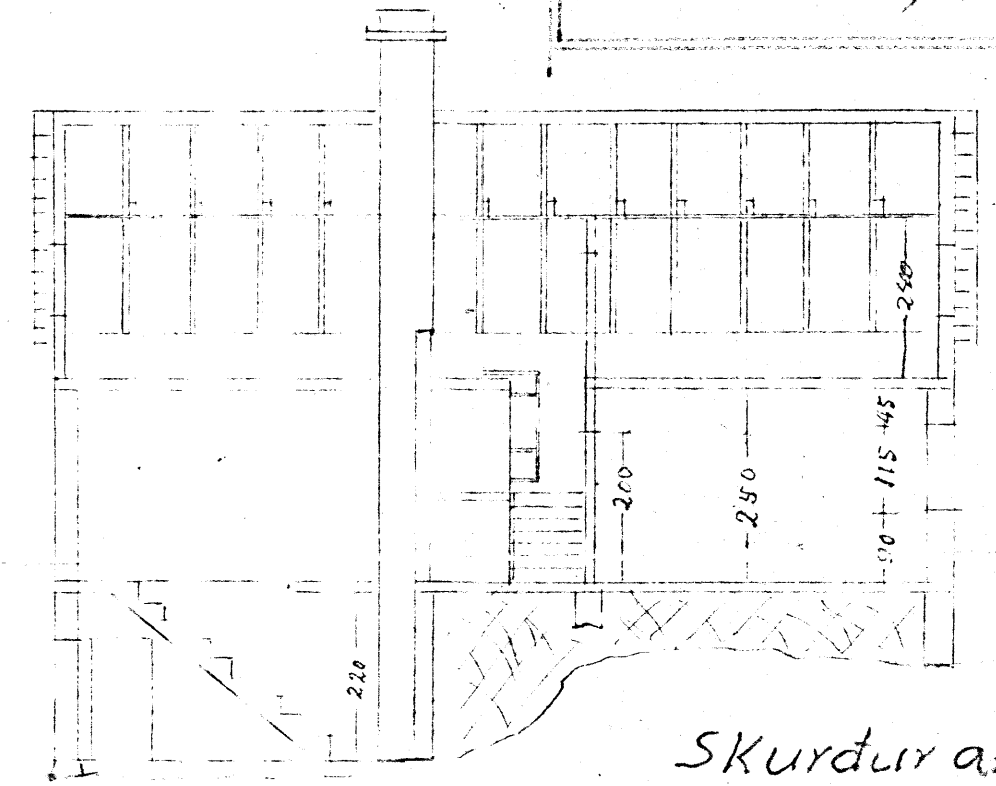
13. - 1955



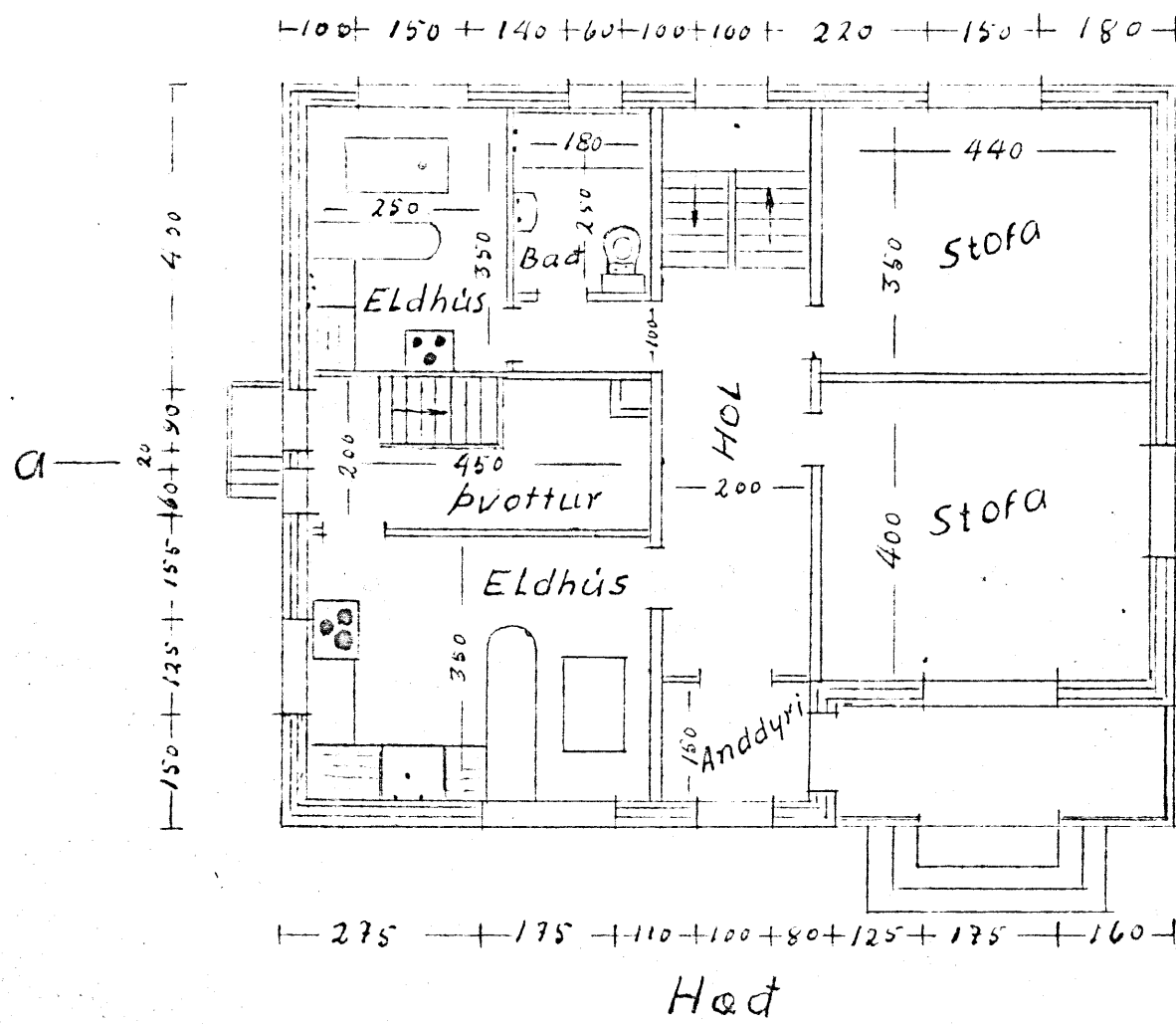
Nordlæg hlid



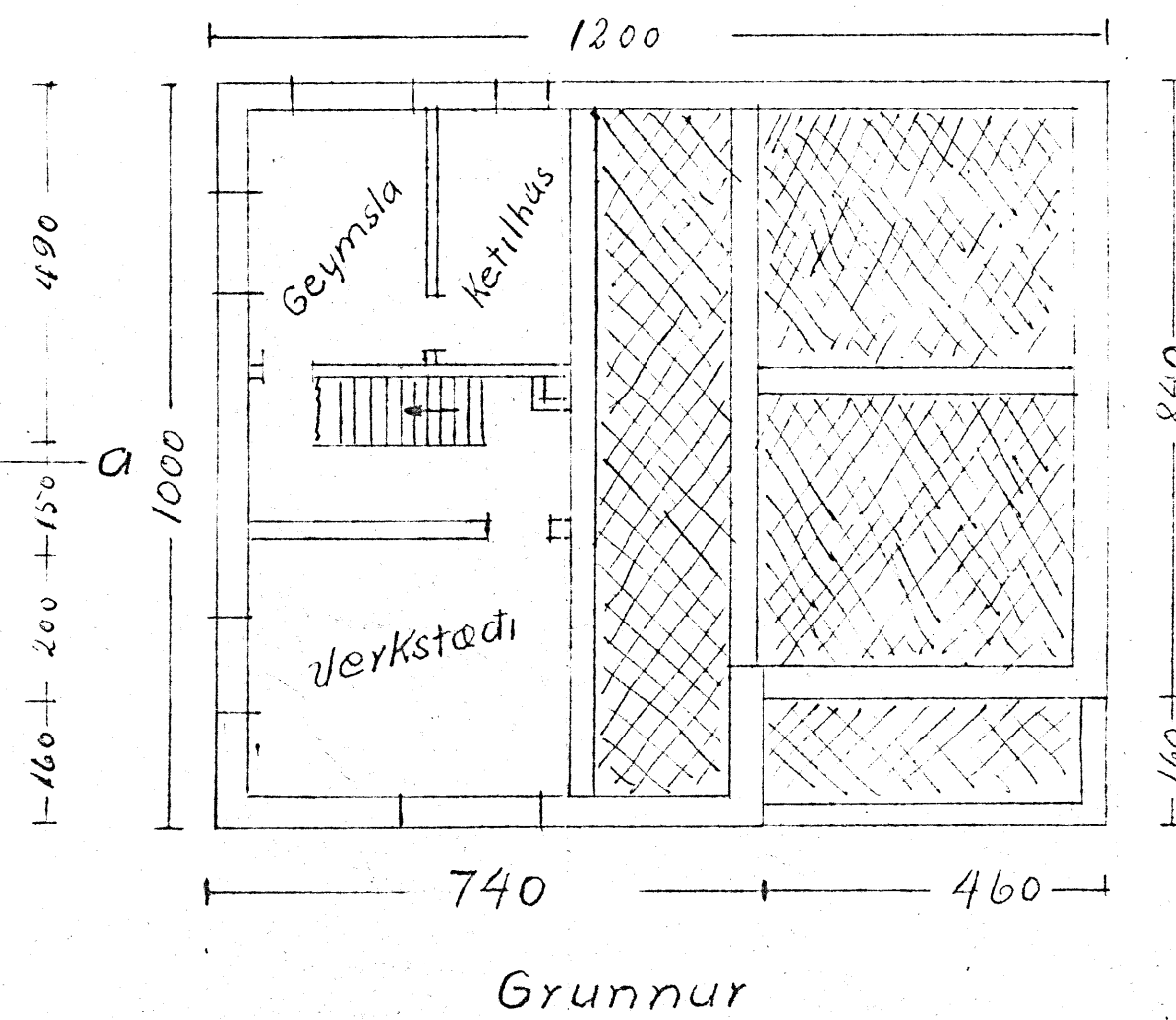
Vestlæg hlid



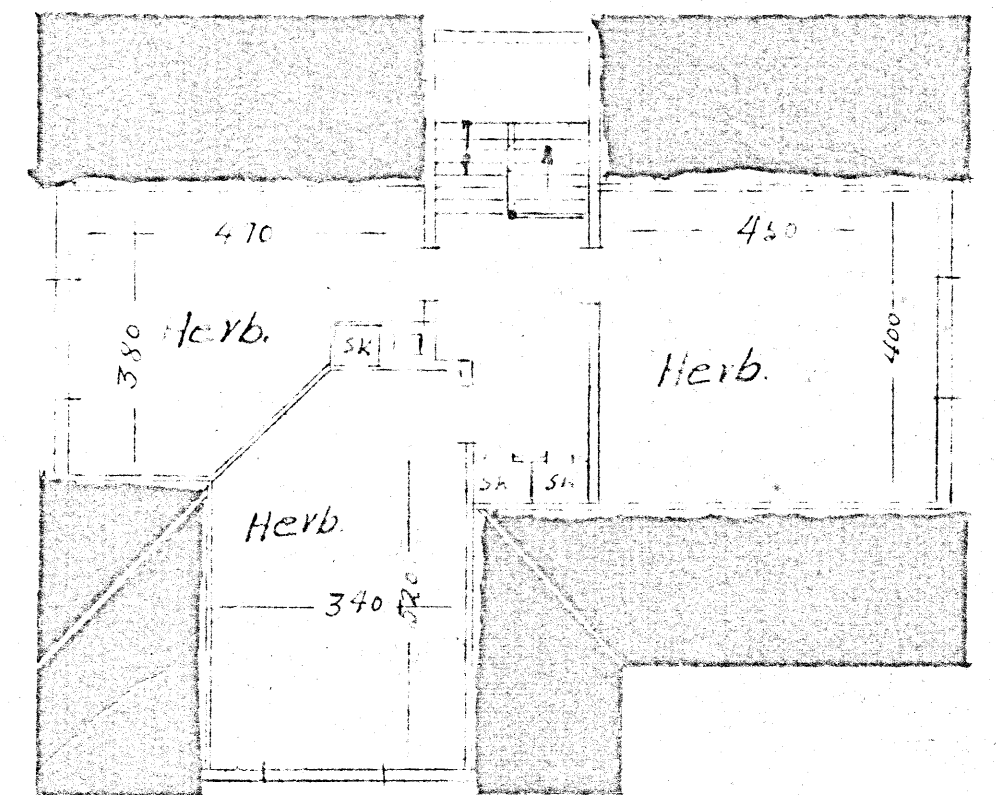
SKURÐUR a-a



Hæð



Grunnur



HOLAVEGUR I

Rís Mál = 1:100  
 Dalvík 28/3 1956  
 Ingólfr Jónsson