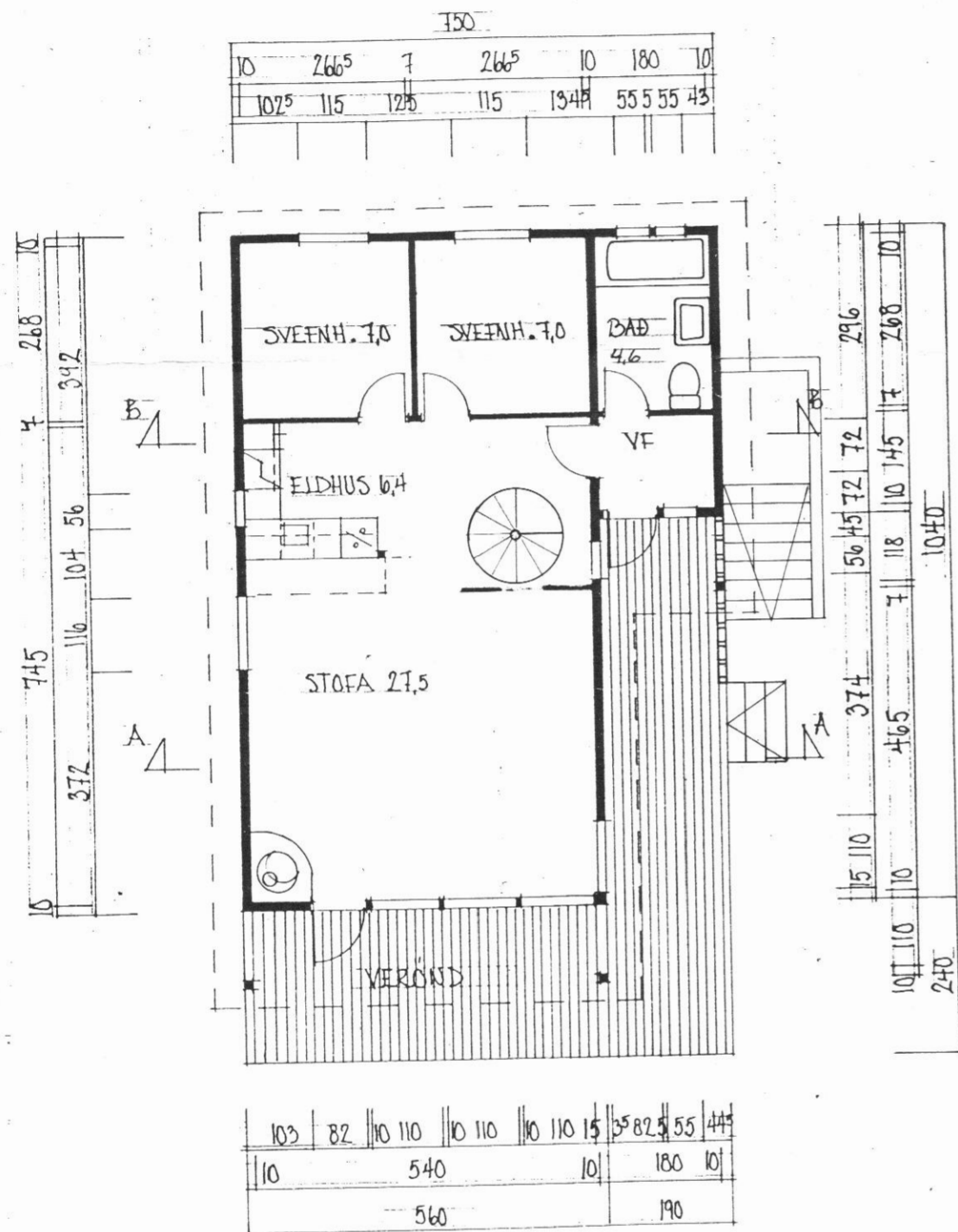
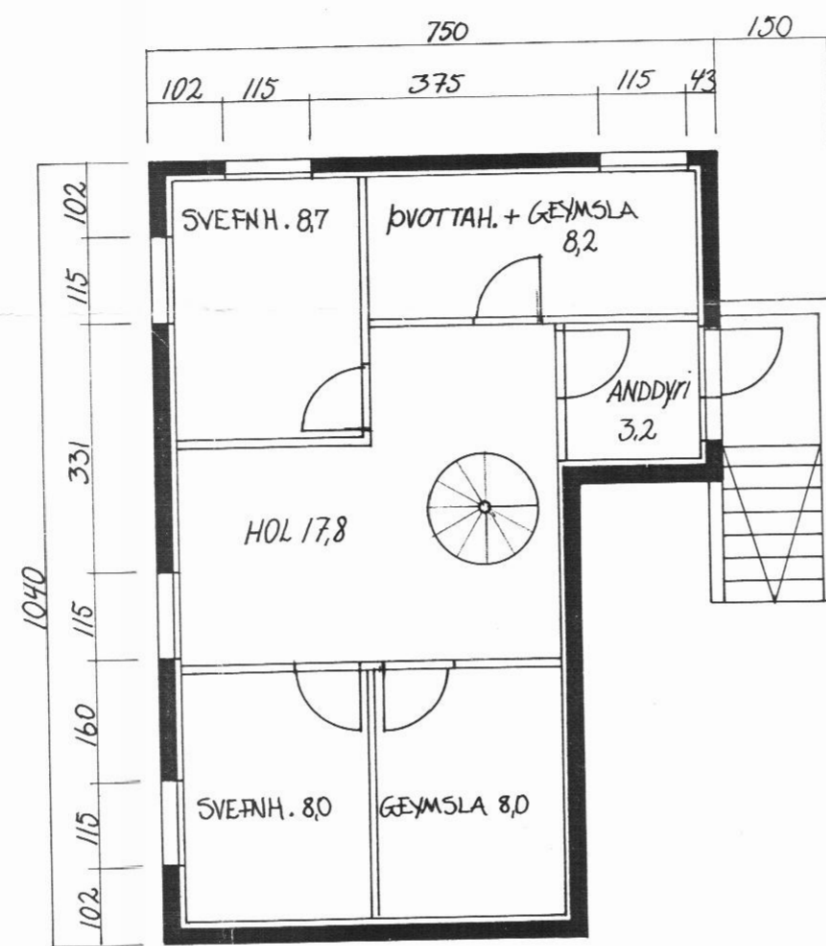


BAKKI SVARFADARDAL

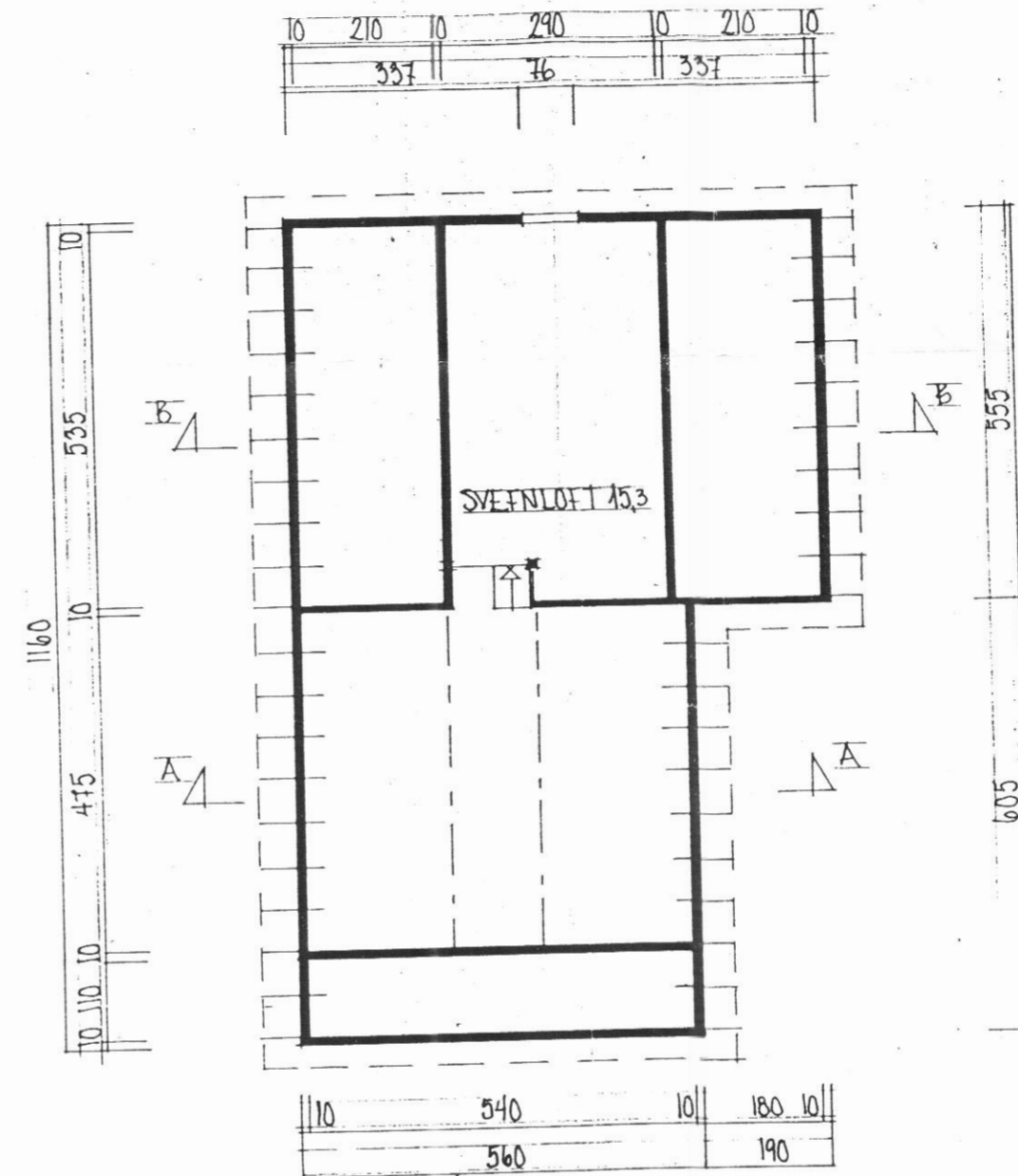


1. HÆÐ $66,6 \text{ m}^2$
 $170,3 \text{ m}^3$



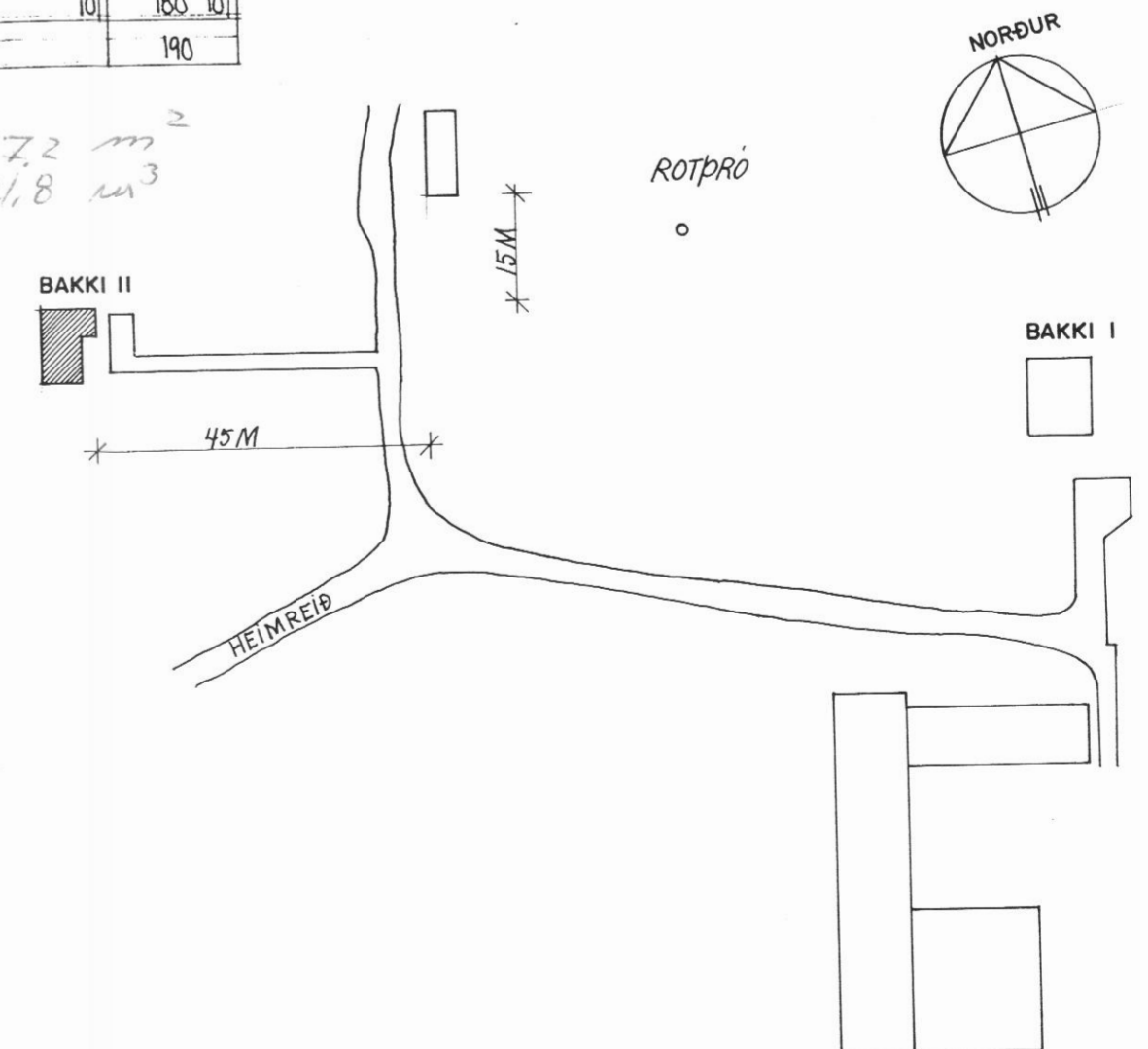
KJALLARI

$66,6 \text{ m}^2$
 $169,8 \text{ m}^3$



SVEFNLOFT

$17,2 \text{ m}^2$
 $21,8 \text{ m}^3$



AFSTÖÐUMYND 1:1000

TYPE: KNUT SPESIAL ISLAND +
PLAN · SNITT · FASADER. M. 1:100.
BRUTTO GRUNNFLATE $66,6 \text{ M}^2$. BRUTTO HEMS $17,2 \text{ M}^2$. VOLUM $226,3 \text{ M}^3$.
JUNI 1992. CLAUD SVANSTRÖM. SNILARKITEKT MNAL.