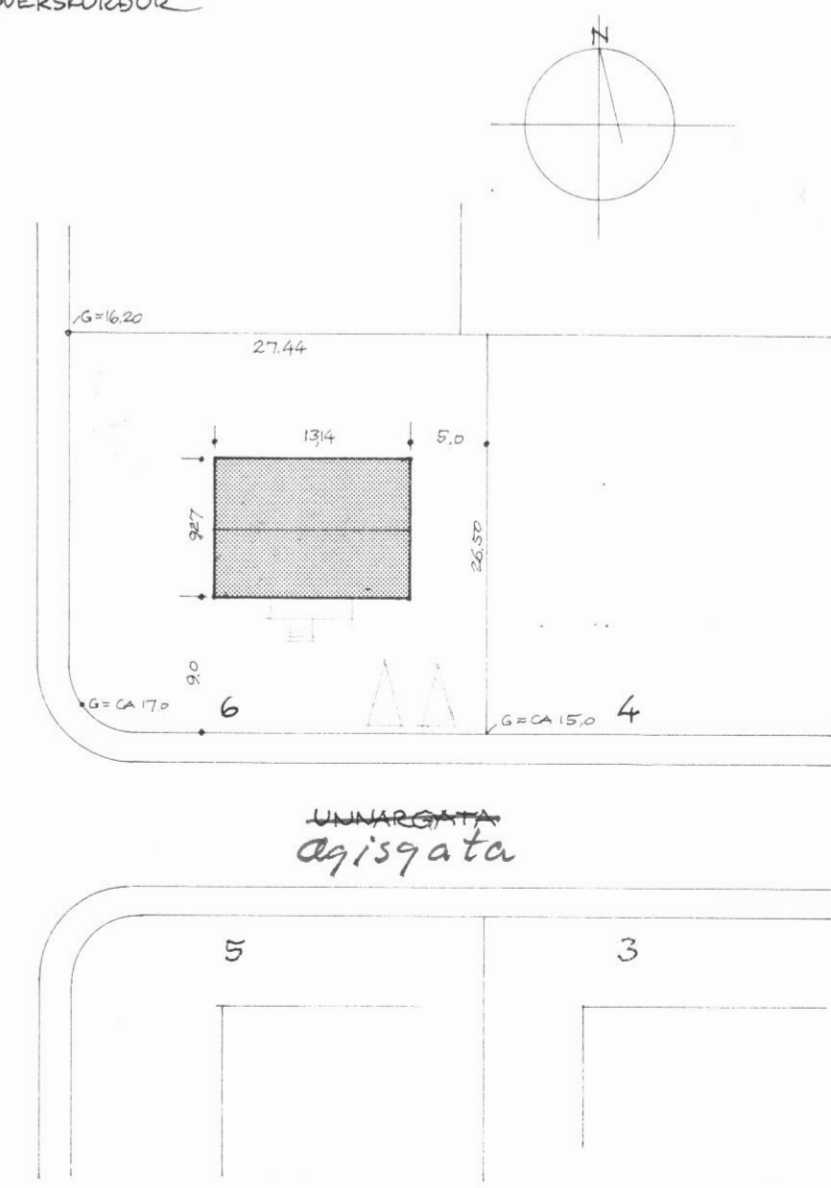
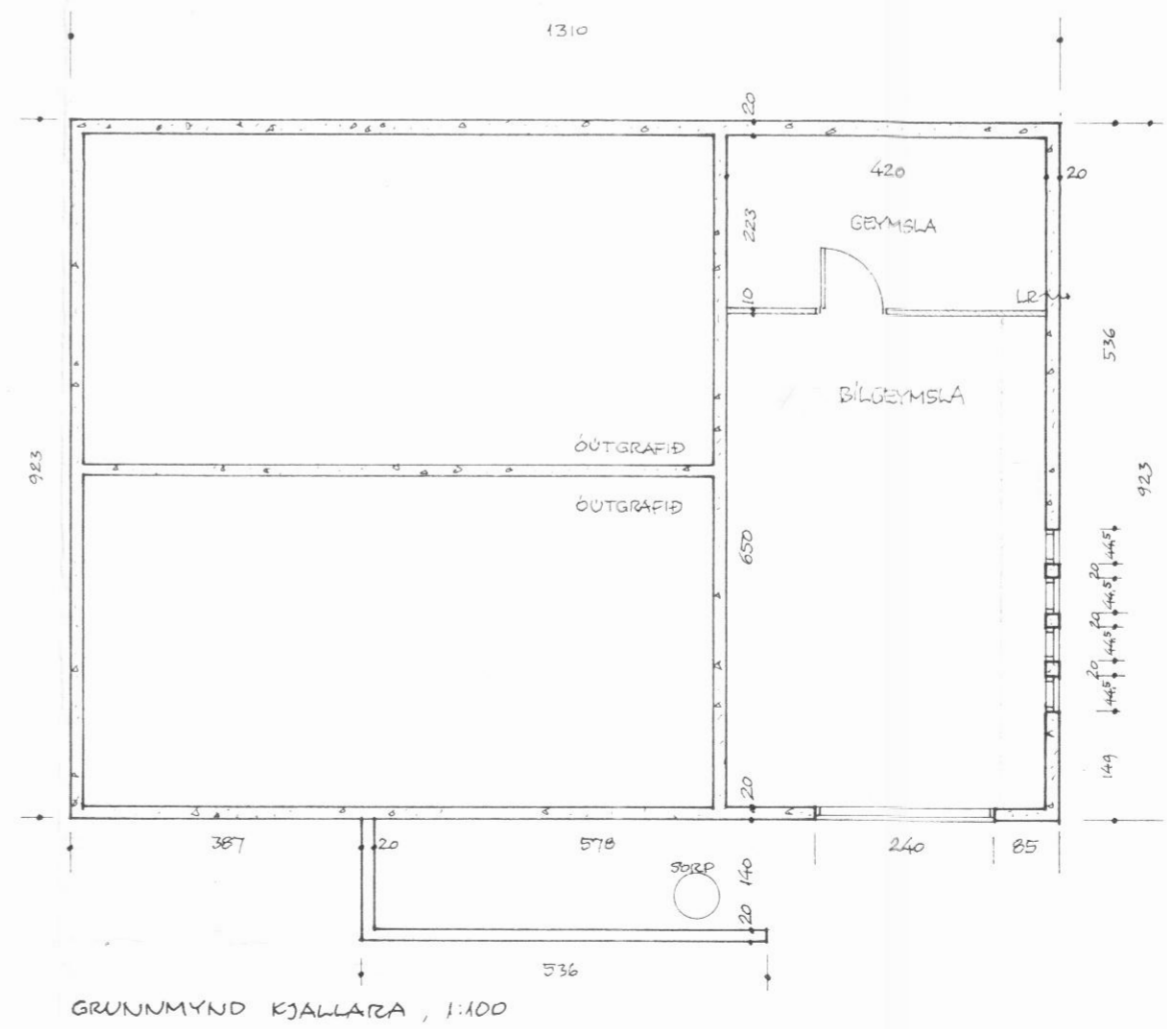
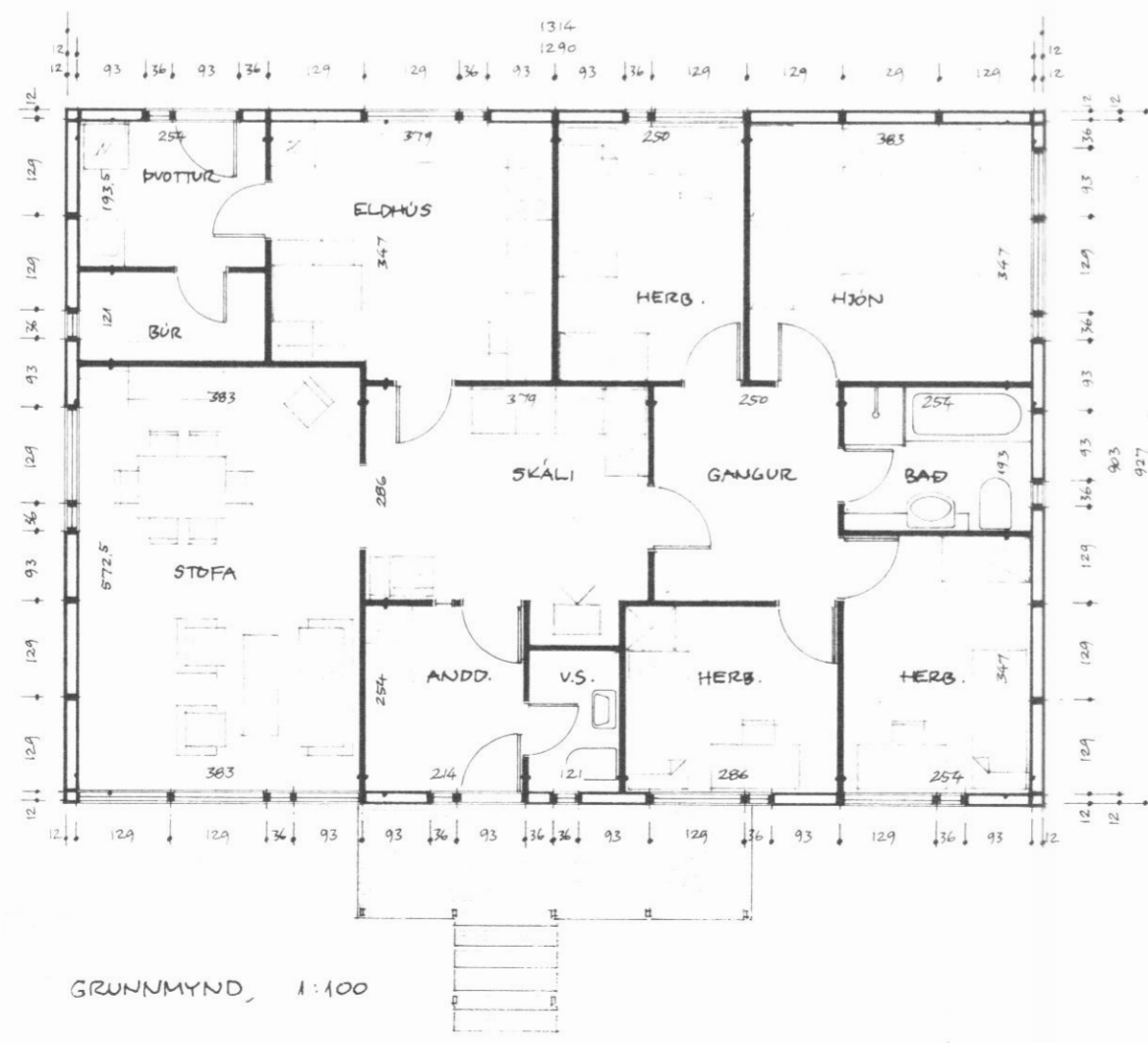
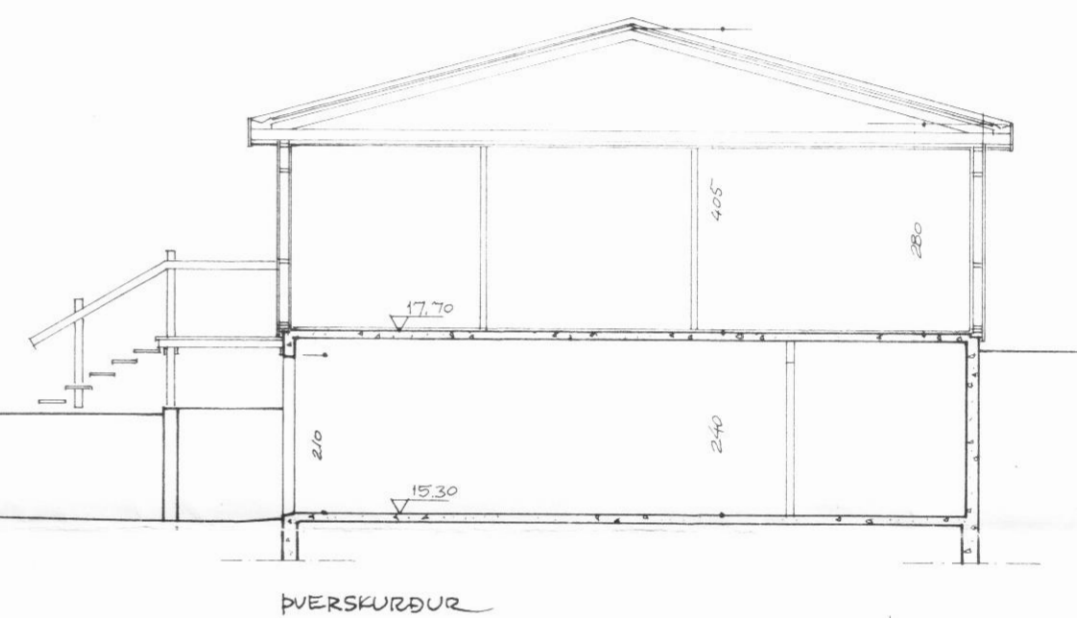
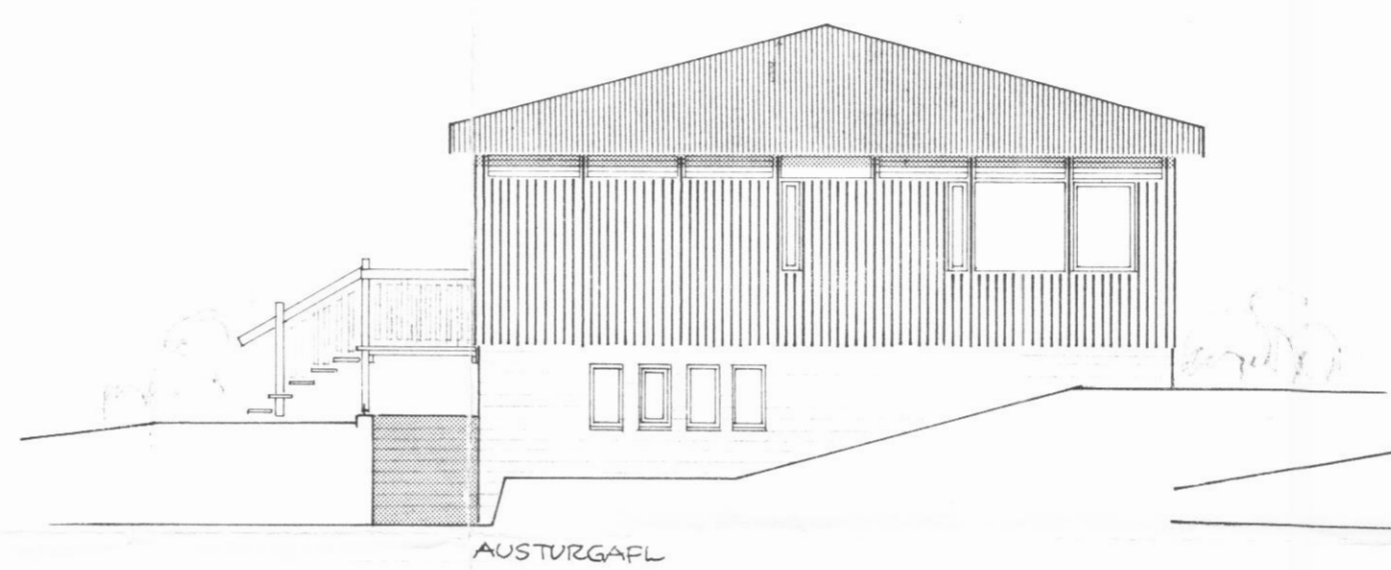
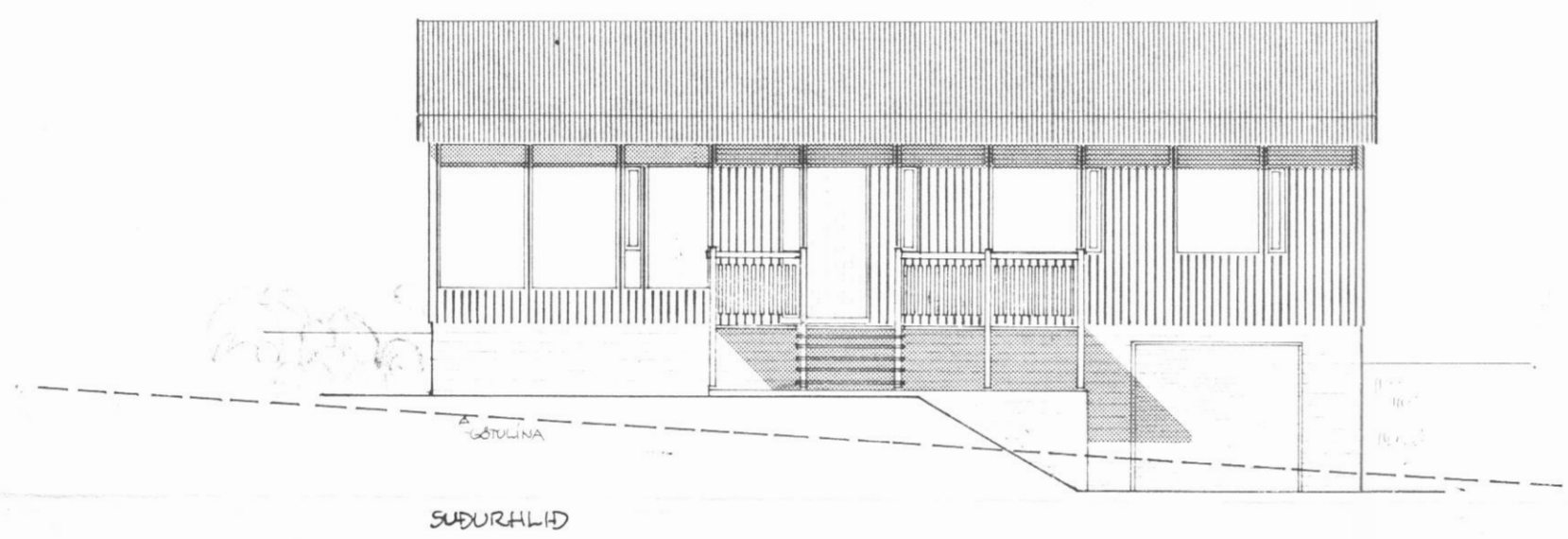
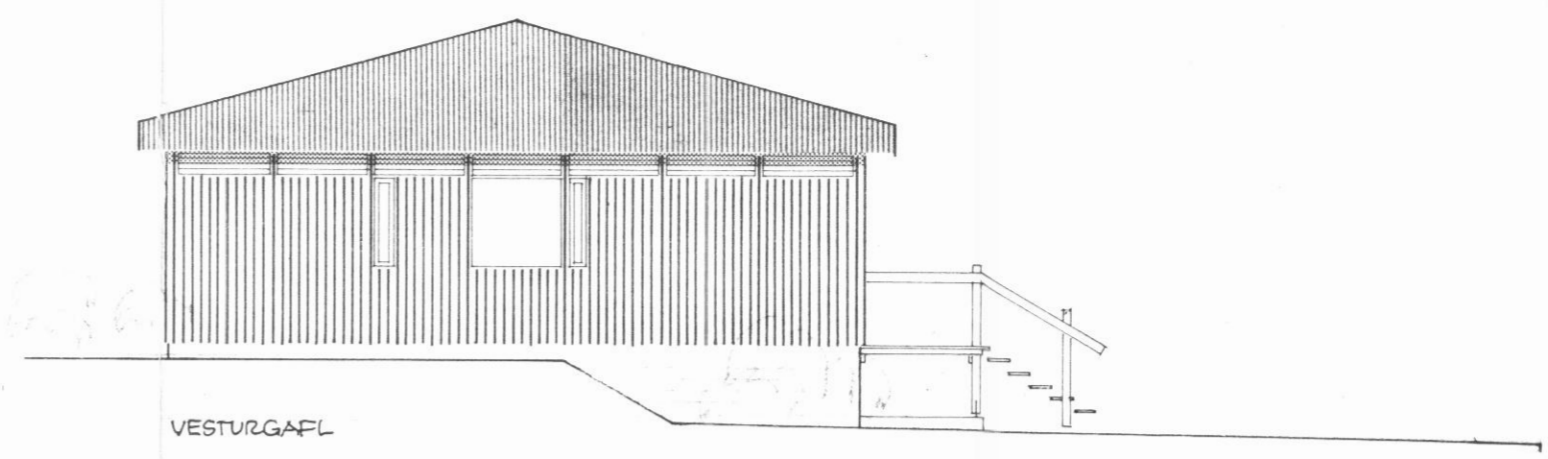
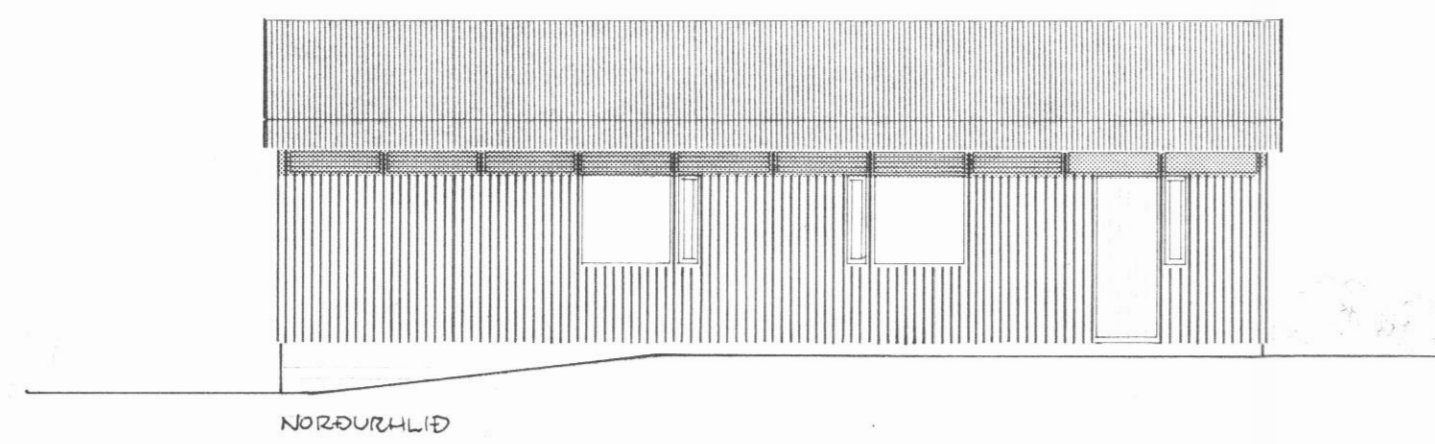


Sámp. á fundi  
byggisráðgjafar  
19/1/79.

L. Þeingunnar  
1978



	FLATARMÁL (BR.)	RÚMMÁL (BR.)
ÍBÚÐARHÉÐ	121,8 M <sup>2</sup>	417 M <sup>3</sup>
KJALLARI	41,5 -	108 -
SAMTALS	163,3 M <sup>2</sup>	525 M <sup>3</sup>

AFSTÖÐUMYND, 1:500

HÚSGERÐ 33 (B1-K)

Agisgata  
HÚSEININGAR HF, SIGLUFIRÐI  
HÚS BYGGT ÚR TIMBUREININGUM (STEINST. KJALLARI)  
UNNARGATA 6, DALVIK  
(HÚS GUDMUNDAR JÓNSSONAR)

GRUNNMYNDR,  
UTLIT, SKURÐUR,  
AFSTÖÐUMYND  
MELIKV. 1:100  
1:500

REYKJAVÍK Í NOV. 1978  
HELGI HAFLÍÐASON, ARKITEKT FAI  
SKIPHÖLTI 1 SÍMI 2 21 49  
Lárus Þórtósson