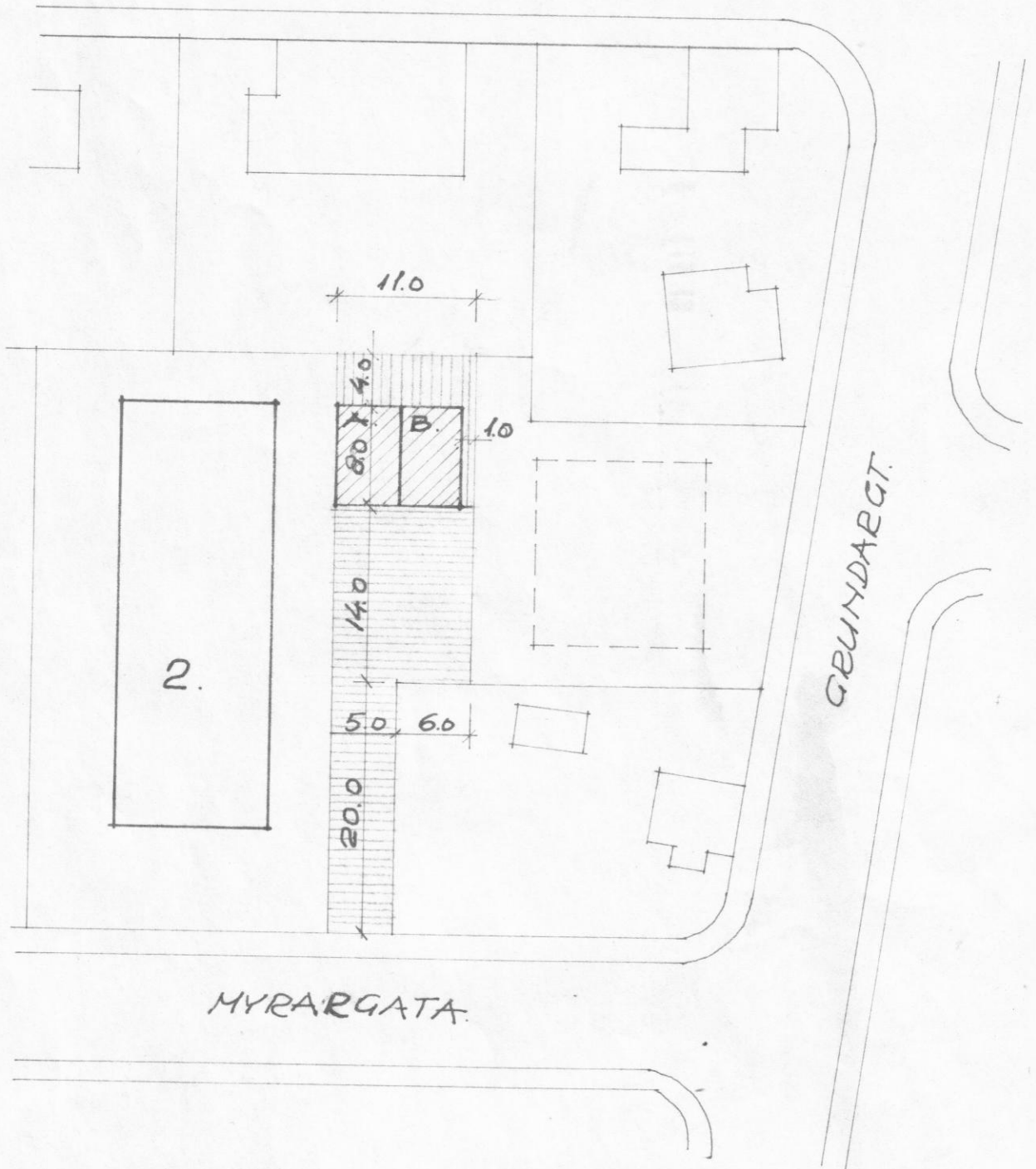


SKIBABRAUT.



MYRARGATA.



LÖÐ SAMAN MEB
MYRARGÖTU NR. 2. $268 \frac{1}{2} = 134 \text{ M}^2$



LÖÐ BILGEYMSLU
SAMTALS. $\frac{132 -}{266 \text{ M}^2}$

LÖÐ HLUTA A 133 M²
" " B 133 -

DALVIK 29/12 '76.
L. Þeingsinnar