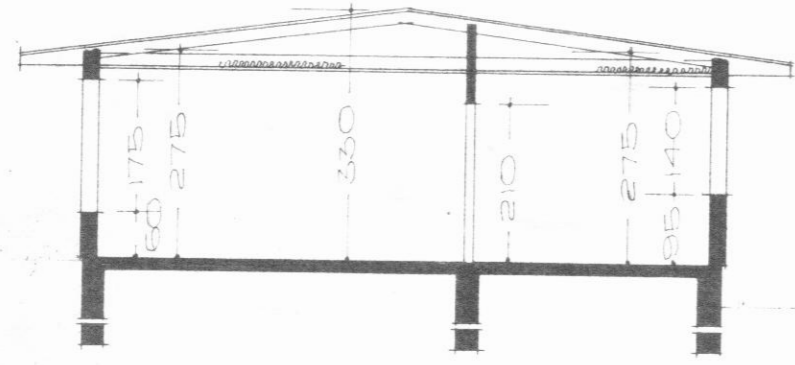
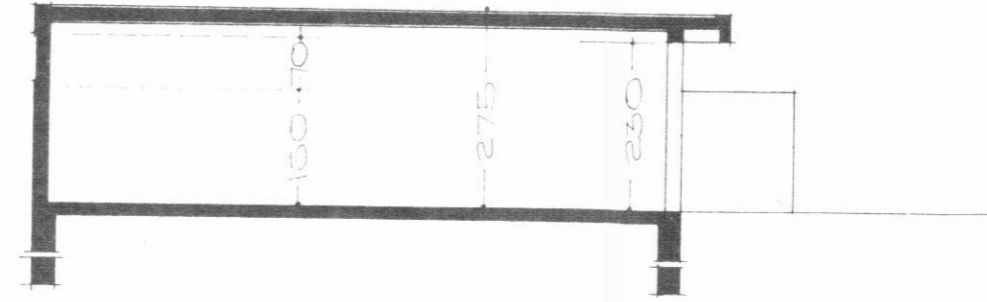


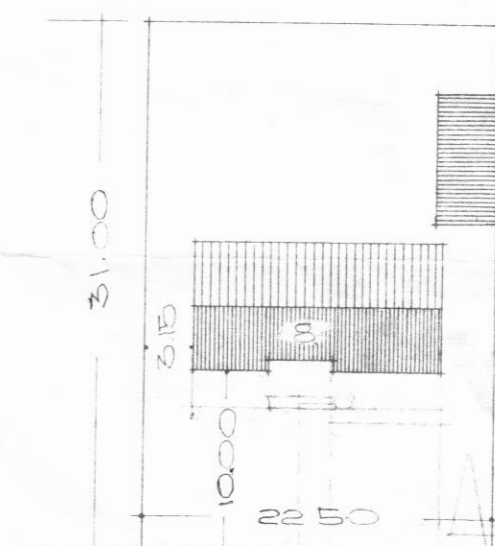
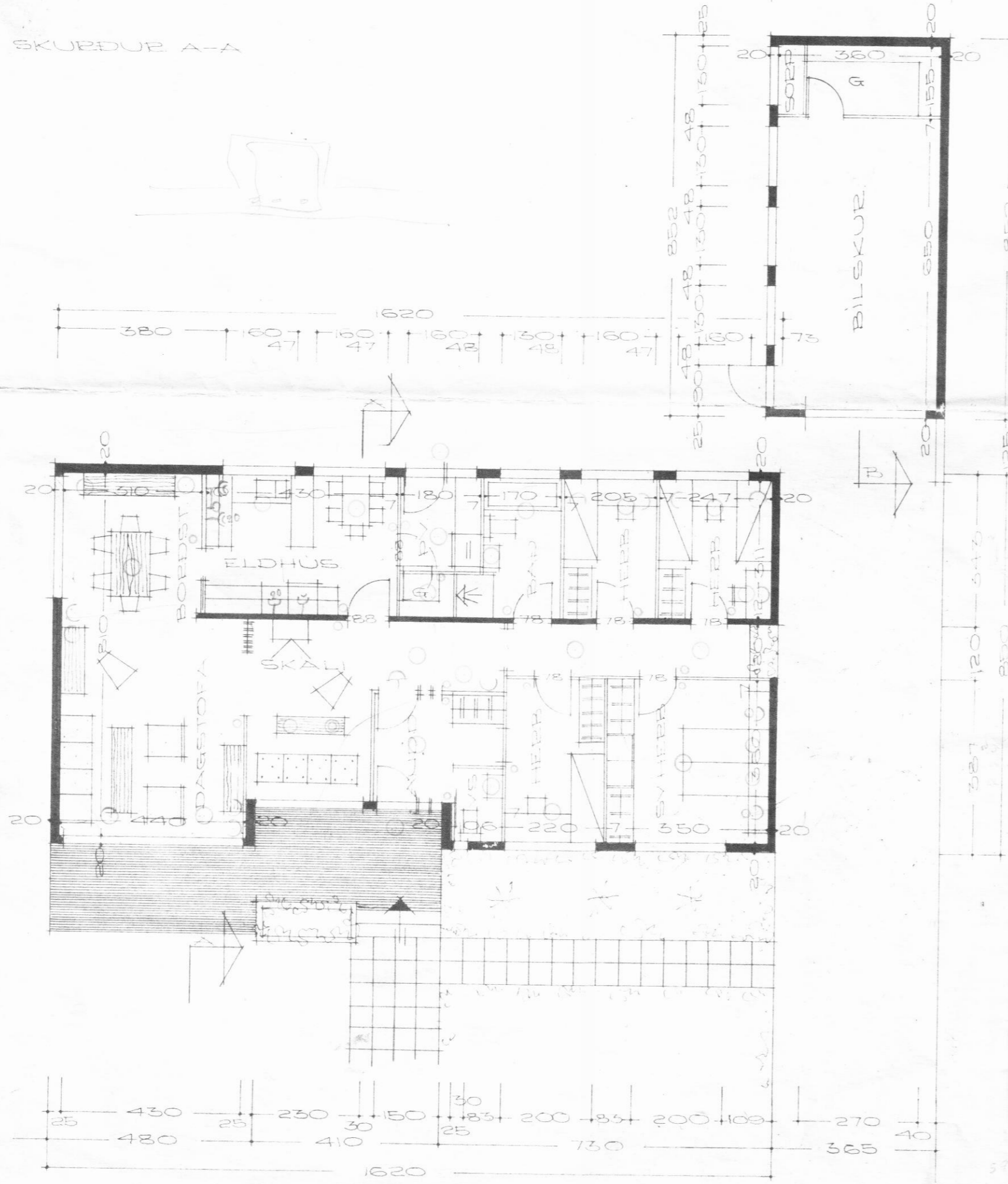
HÚS HR. STEFÁNS HÖLM LÖRSTEINSSONAR
MÍMISVEGUR NR. 8. DALVIK



SKURÐUR A-A



SKURÐUR B-B



$\frac{1}{126} \cdot 3,2^2 \cdot 800 = 820 \text{ m}$
 $F_j = \frac{820}{1425000} = 3,25$

FLATARMÁL HÚSS 34,42 M²
 FLATARMÁL BÍLSKUR 34,08 M²
 AFSTODUMÍÐ 1 MAL 1500

lús 369,65 m³
 þakur 37,87
 407,52 m³ þakur

REYKJAMIK 1. MAERZ 1971.
 Bjartan Þorinnsson