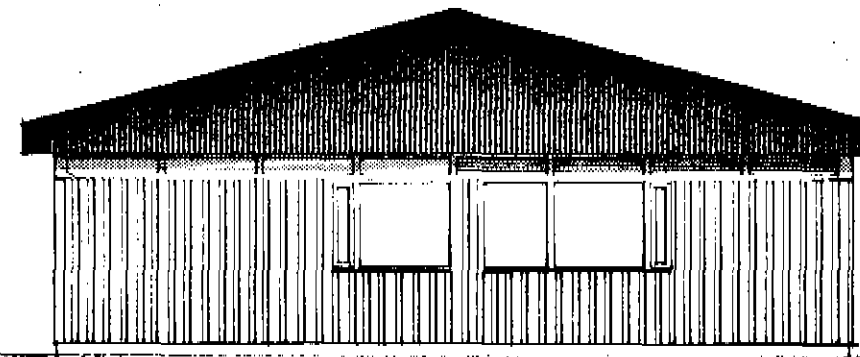
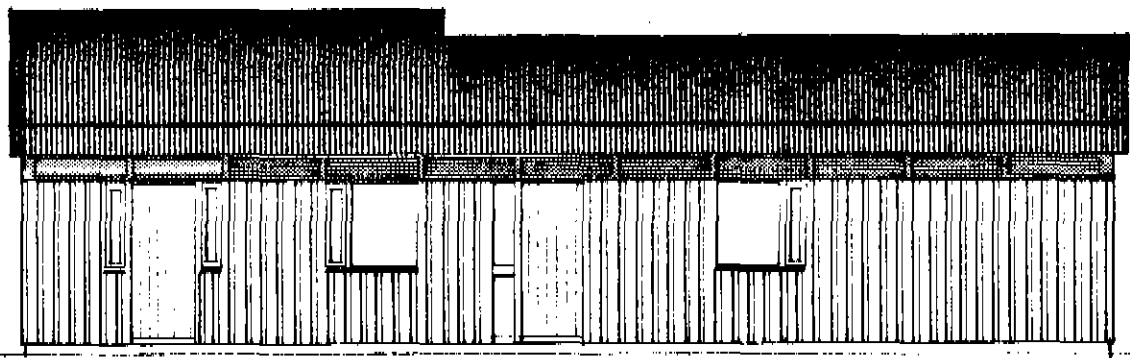


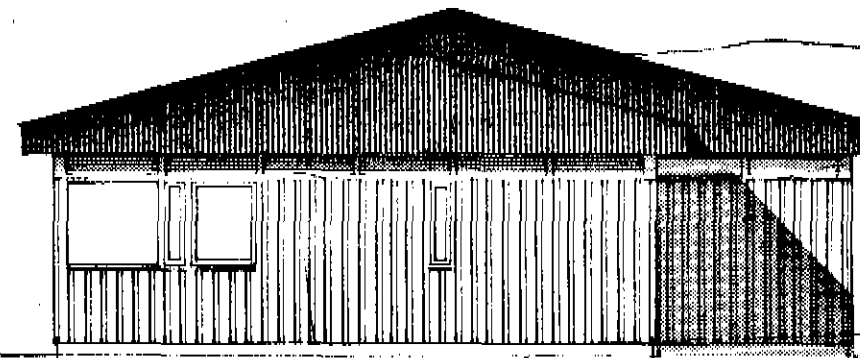
SUDURHLÍÐ



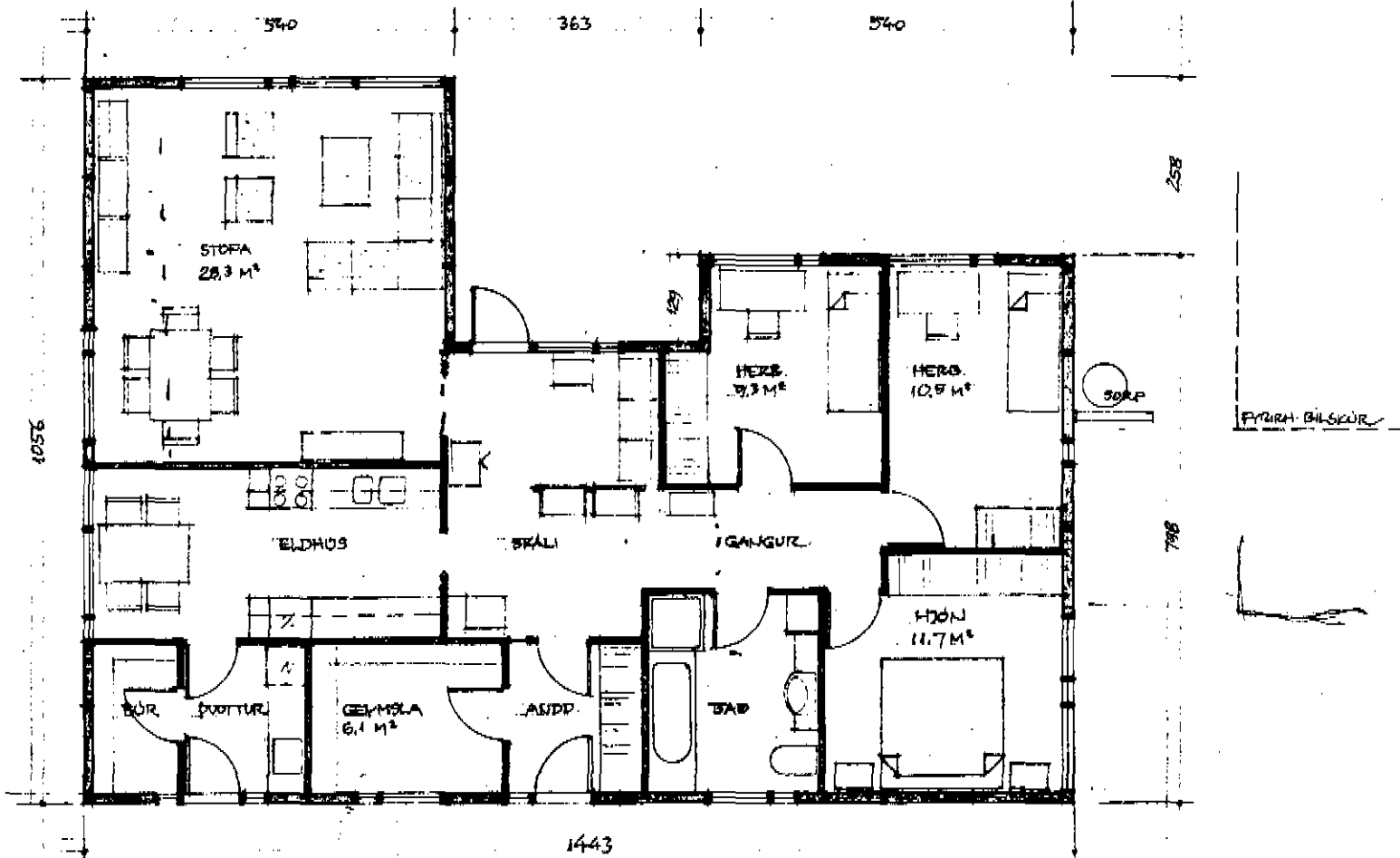
AUSTURGAFL



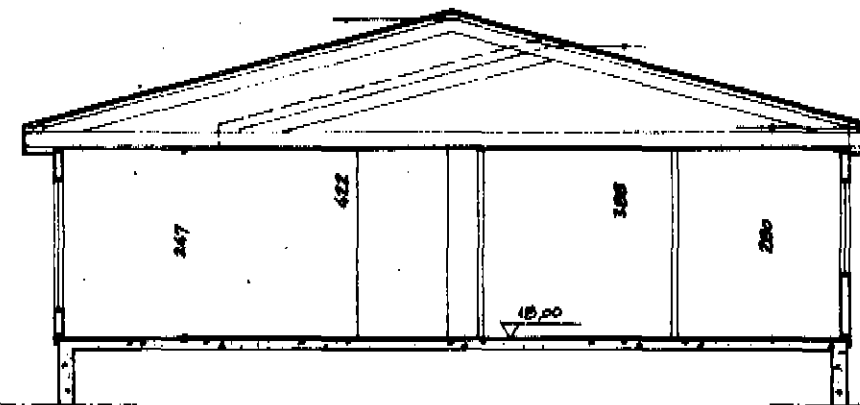
NORÐURHLÍÐ



VESTURGAFL

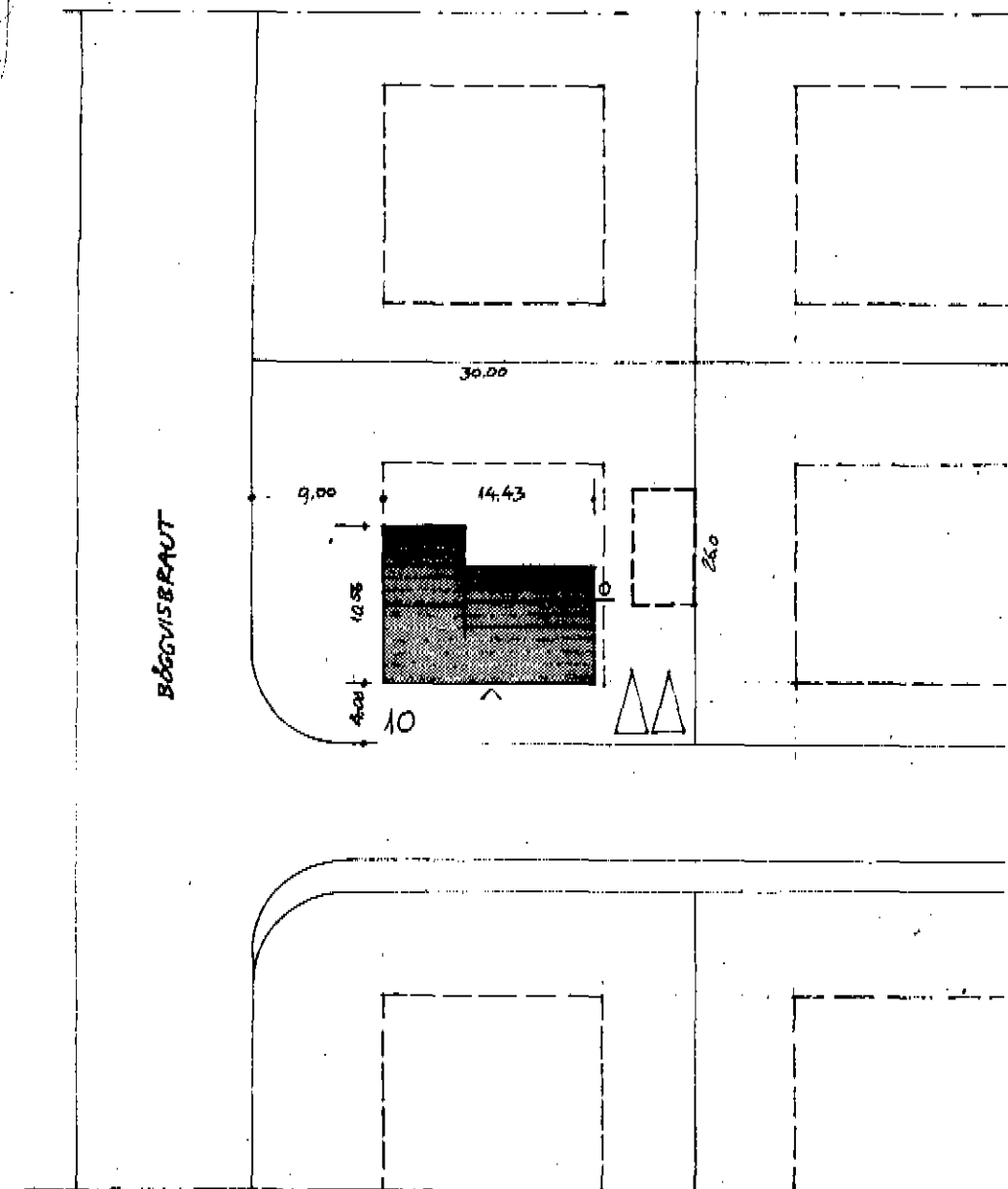
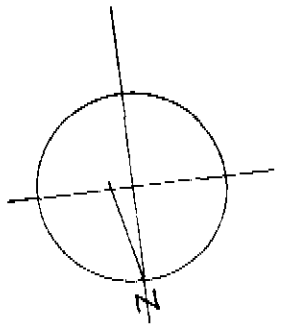


GRUNNMÝND. 1:100



FRANSKUREUR

PLATAMÁL, BRÚTTÓ : 124.4 m<sup>2</sup>  
 NETTÓ (SKV. REGNUM HOSNAÐSKMÁLSTJ.): 109.0 -  
 RÚMMÁL : 425 m<sup>3</sup>



AFSTÖÐUMÝND. 1:500

*Gutni Jónsson*

HUS BYGGT ÚR TIMBURBENINGUM  
 FRÁ HÚSBENINGUM HF, SIGLUFIRÐI  
 „BAKKAHUS“ - HÚSGERÐ 124.141

BÖGGVISBRAUT 10, DALVÍK  
 (HUS GUMUNDAR JÓNSSONAR)

GRUNNMÝND -  
 ÚTLIT, SKURBURZ - MELIKVARDI 1:100  
 AFSTÖÐUMÝND - 1:500

REYKJAVÍK Í MARZ 1980  
 HELGI HAFLÍÐASON, ARKITEKT FAFÍ  
 SKIPTHILT 1 - Sími 2.21.49