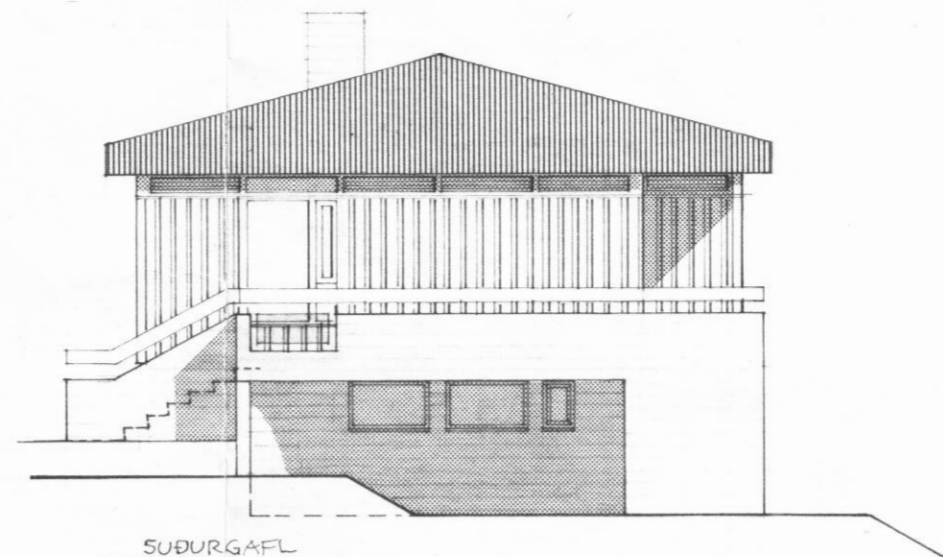


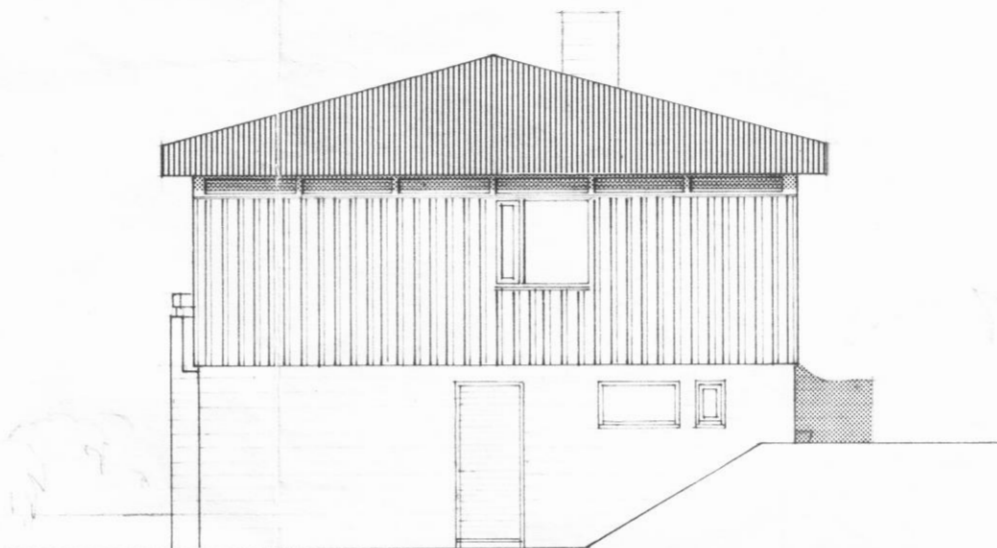
VESTURHLÍÐ



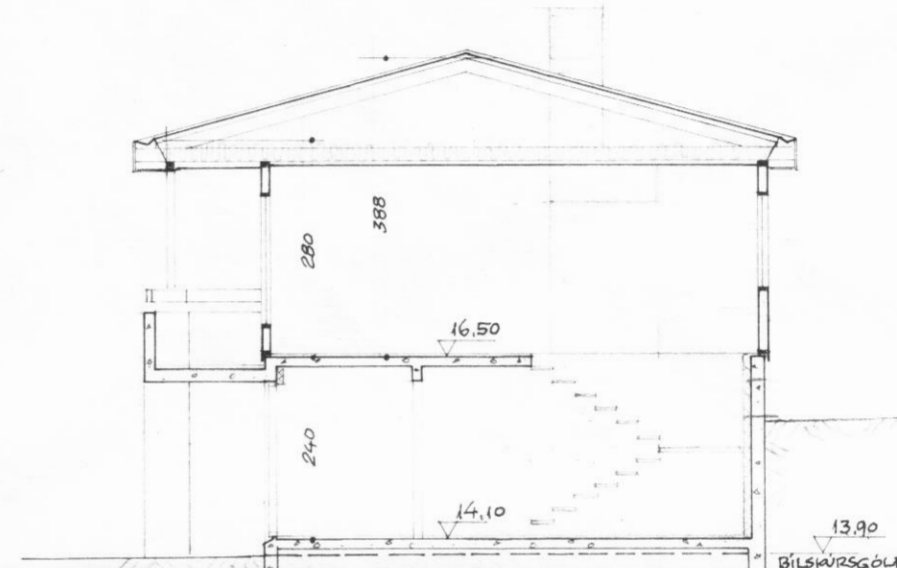
SUDURGÆFL



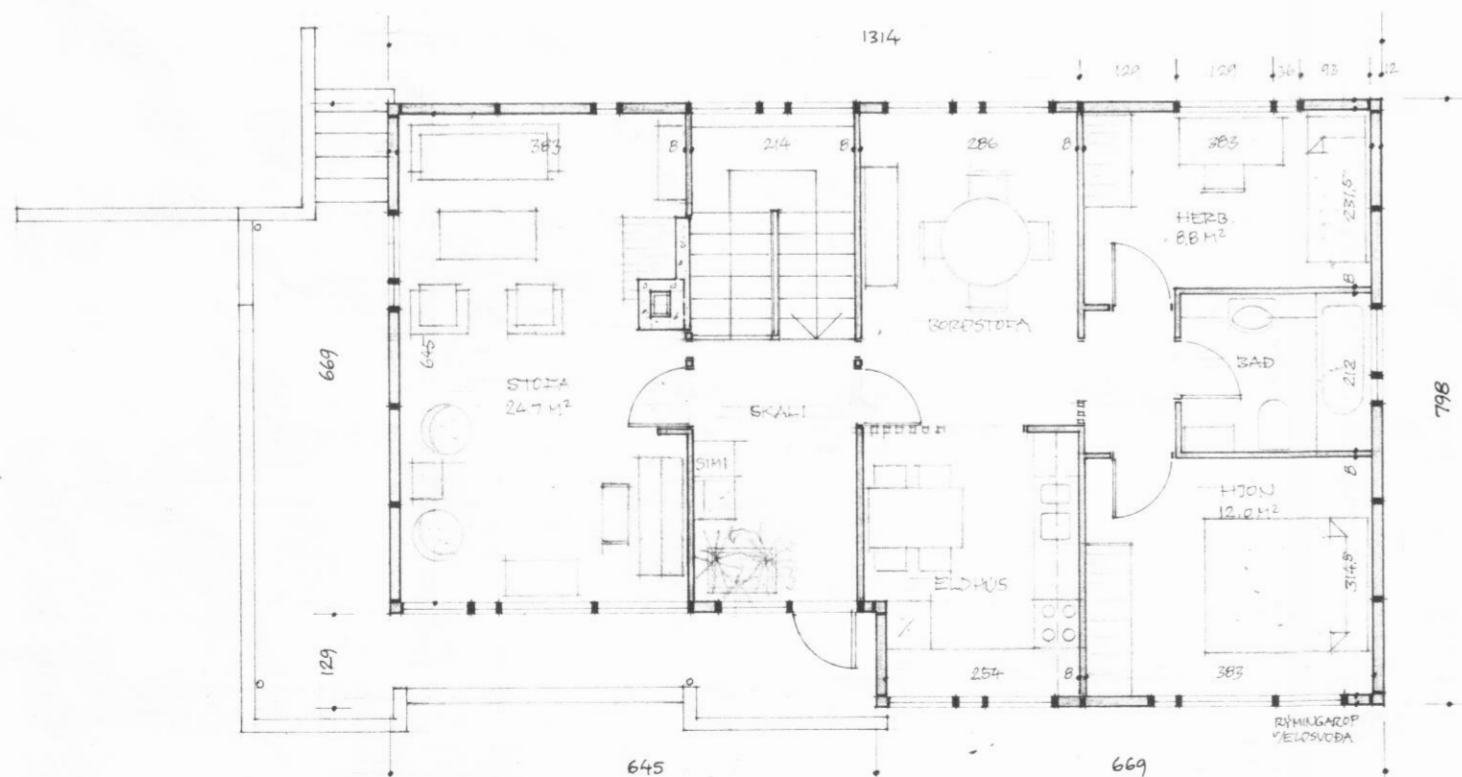
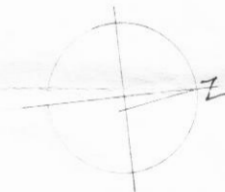
AUSTURHLÍÐ



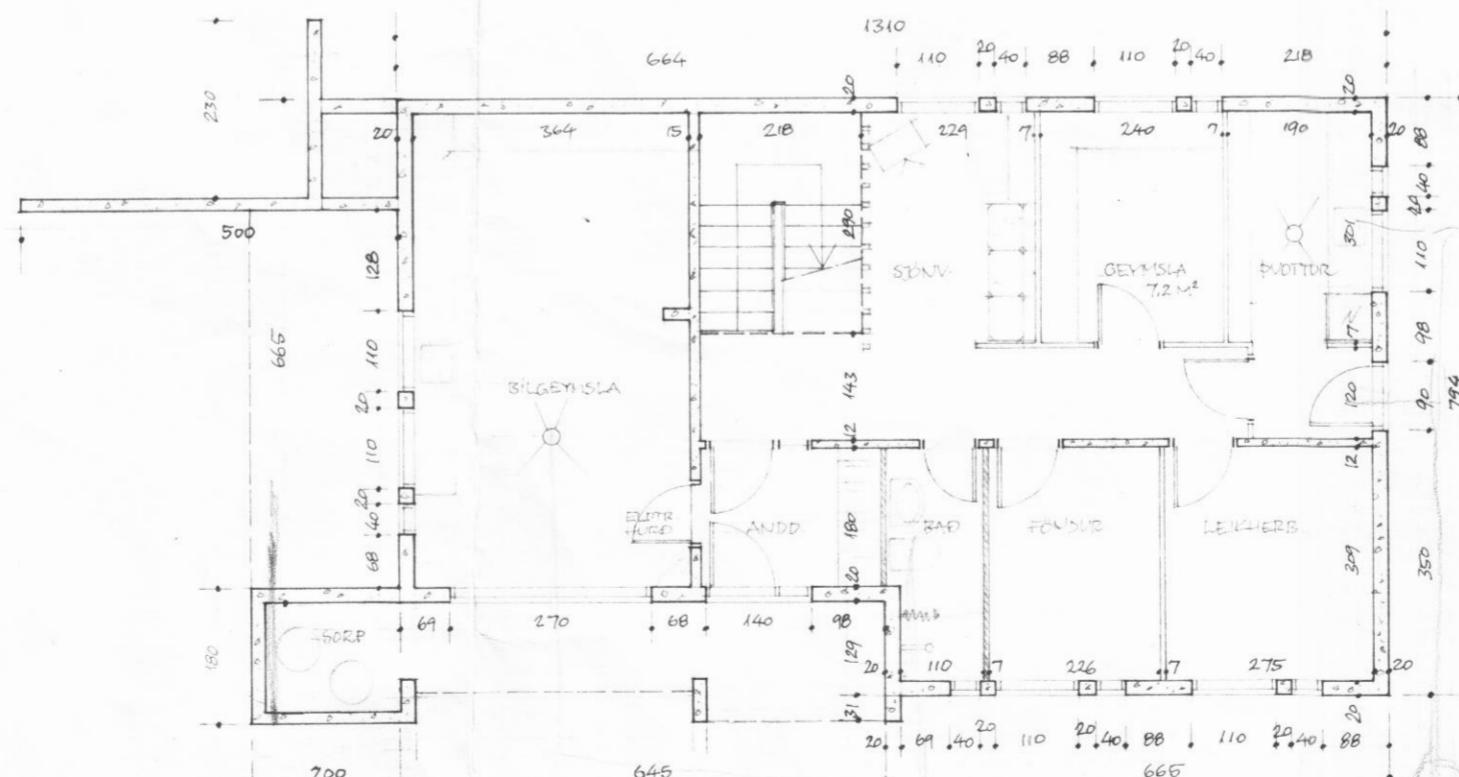
NORÐURGÆFL



DVERSKURÐUR

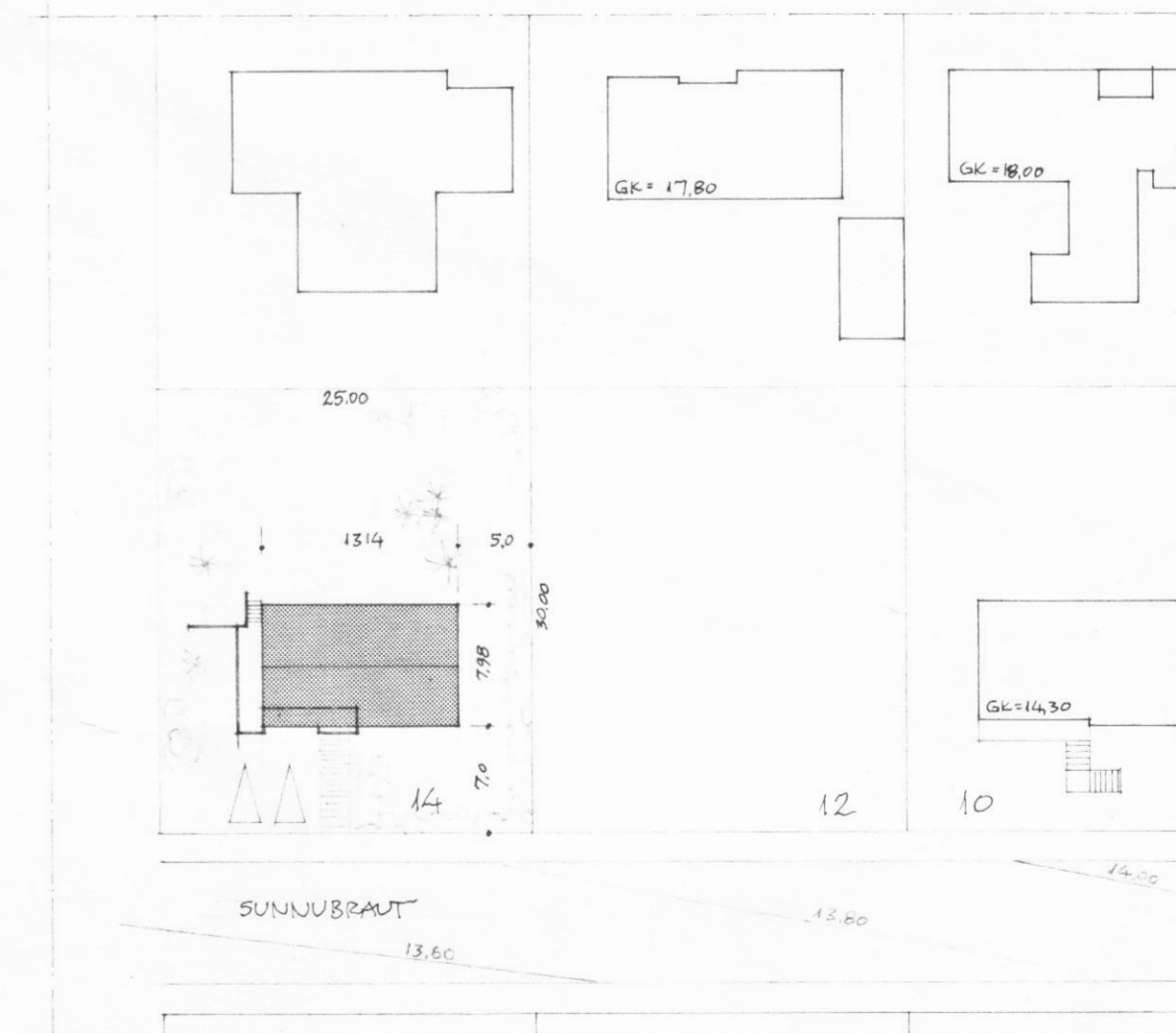


GRUNNMYND BÚÐARHÆÐAR - 1:100



GRUNNMYND KJALLARA

	FLATARMÁL (BR.)	RÚMMÁL (BR.)
BÚÐARHÆÐ	96,5 M <sup>2</sup>	322 M <sup>3</sup>
KJALLARI (M. BÍLG.)	95,7 -	238 -
SAHTÍLS	19 2,2 M <sup>2</sup>	560 M <sup>3</sup>



AFSTÖÐUMYND - 1:500

SUNNUBRAUT 14. DALVIK  
(HÚS JOHANNIS DANIELSSONAR)

GRUNNMYND  
SKURÐUR, ÚTLIT - MÆLUR 1:100  
AFSTÖÐUMYND - - 1:500

HÚS BYGGT ÚR TIMBUREININGUM  
FRÁ HÚSEININGUM HF, SIGLUFIRZDI  
(STEINSTR. KJALLARI)  
"BAKKAHÚS" - HÚSGERÐ 97.011

REYKJAVÍK Í FEB. 1980  
HELGI HAFLÍÐASON, ARKITEKT FKA  
SKIPHOLI 1. - SÍMI 2 21 49  
Helgi Hafliðason

TEIKN. NR. 0