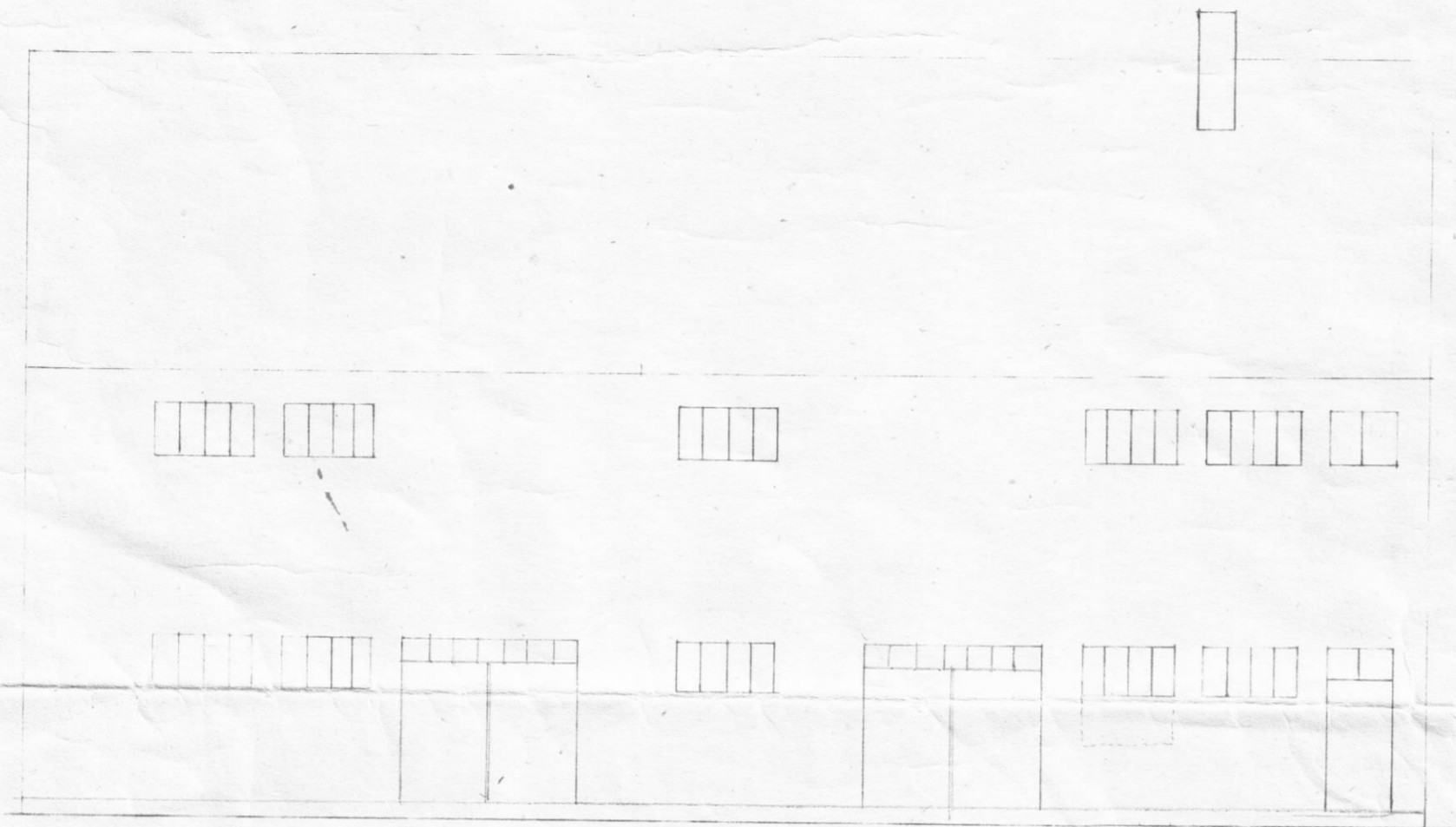


VERBÚÐ

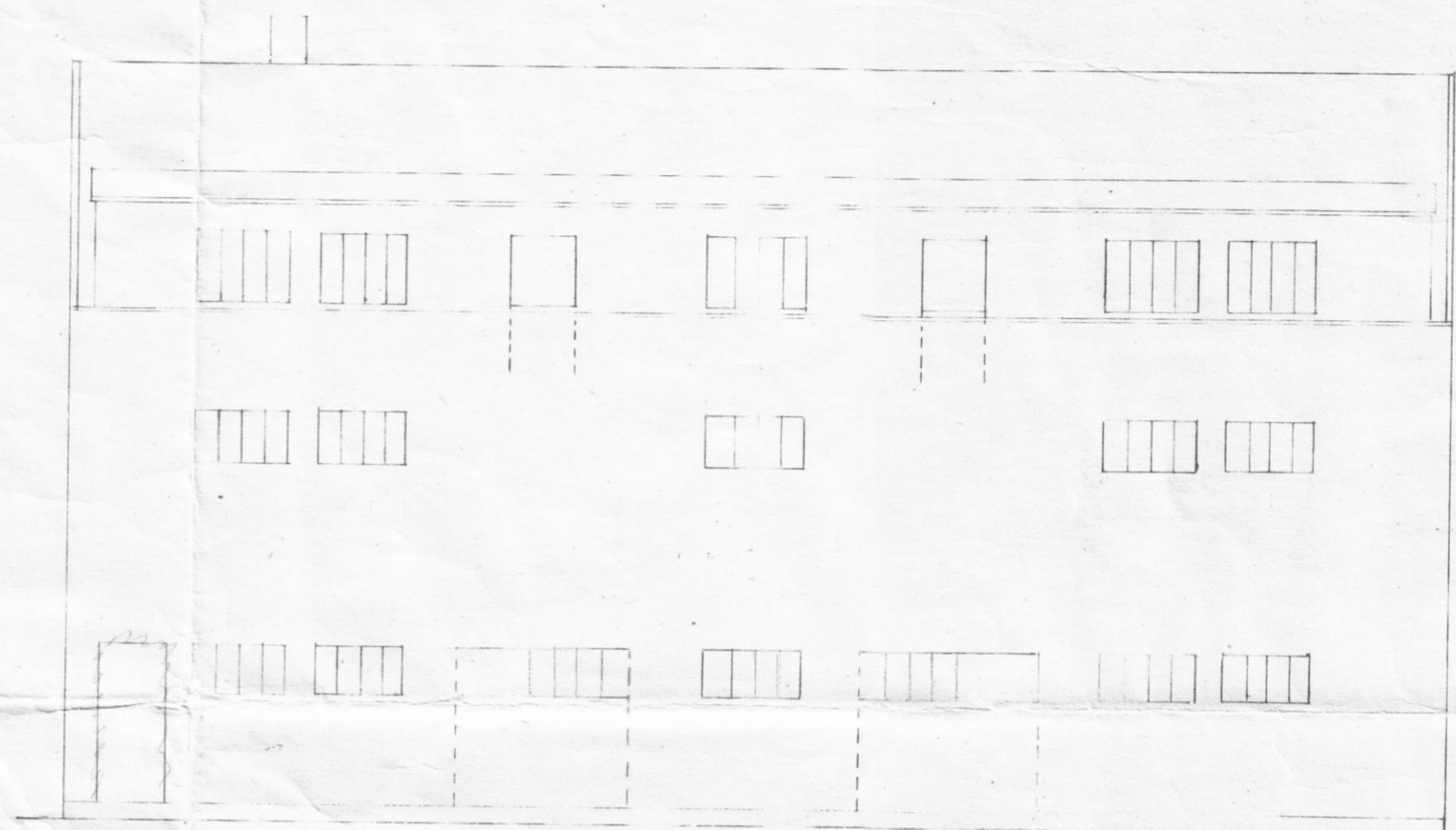
Egils Júlíussonar Dalvíkur
 N. 1100 - e. fjárfingur

Samþ. á fundi byggingarnefndar Dalvíkur
 17/8 1949. Þó þarf að sanna um að niður
 áður en byggt er á byggingum úfri hatauma

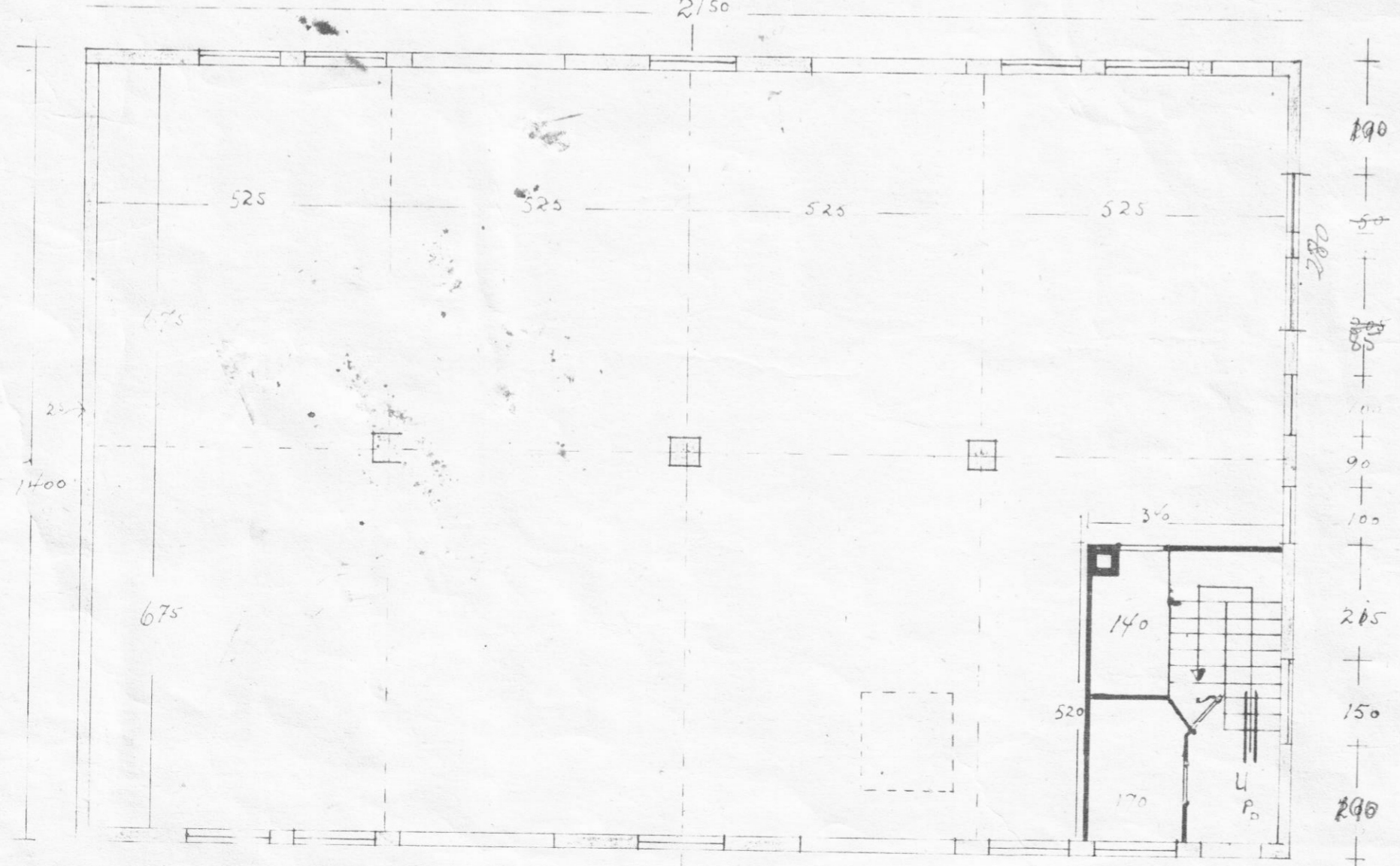
Dalvíkur 17/8 1949
 J. L. Þorsteinsson
 Fr. Jónsson



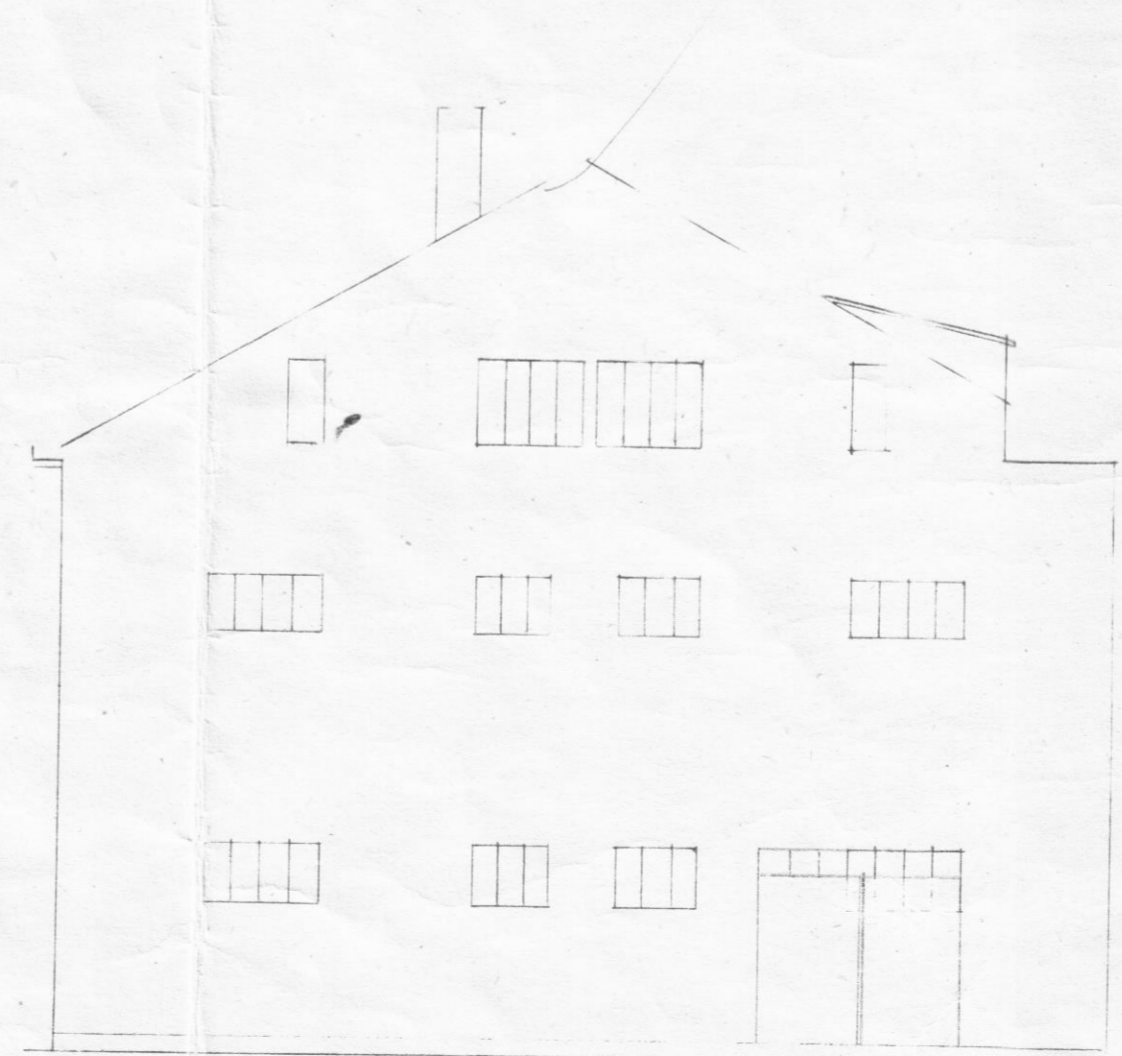
Mót vestri



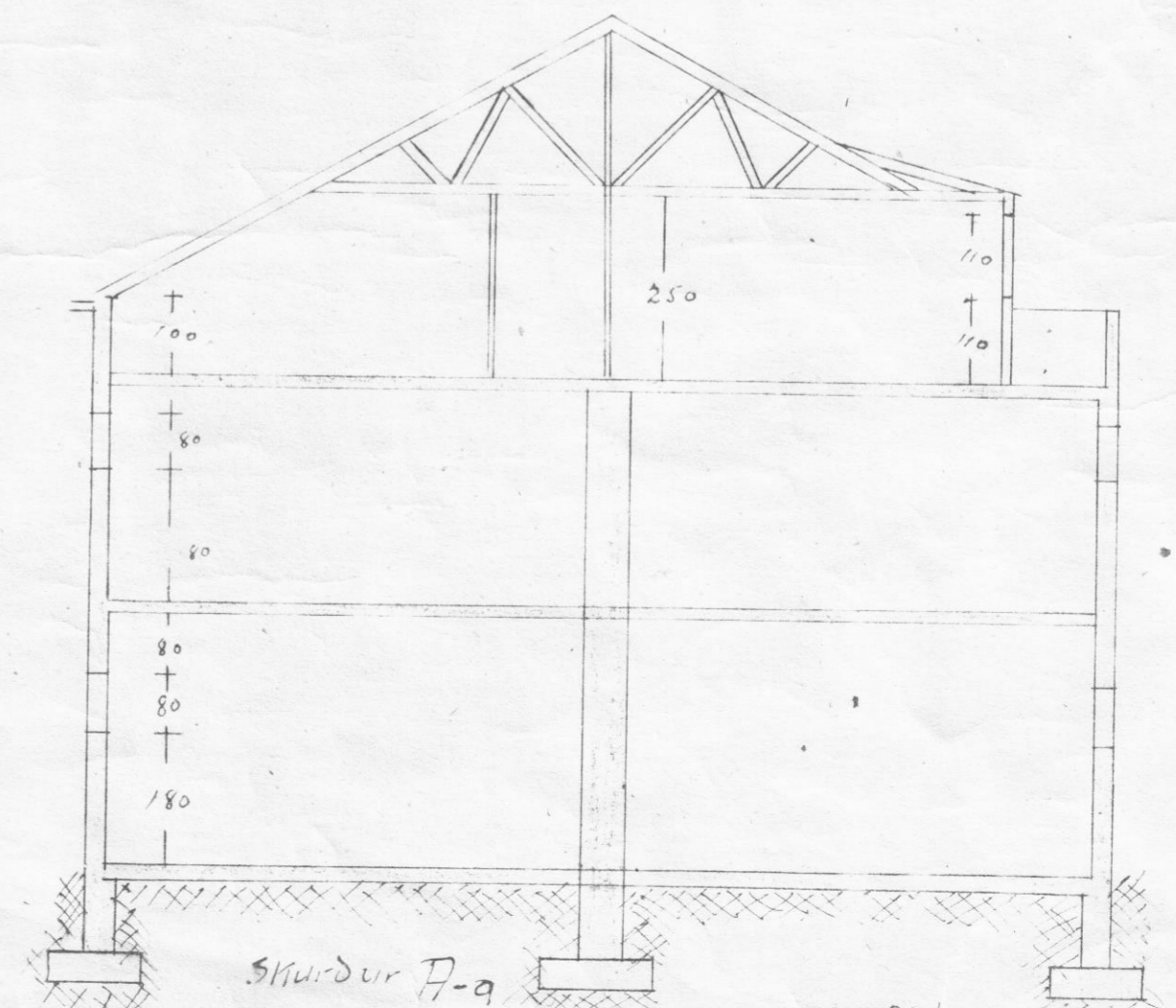
Mót austri



Mót vestri



Mót suðri



Skurður A-a

200 + 150 + 140 + 150 + 280 + 120 + 150 + 120 + 280 + 160 + 50 + 140 + 150 + 200 + 50
 381 m² 1. hæð 1023 m² 460 kg. hæð