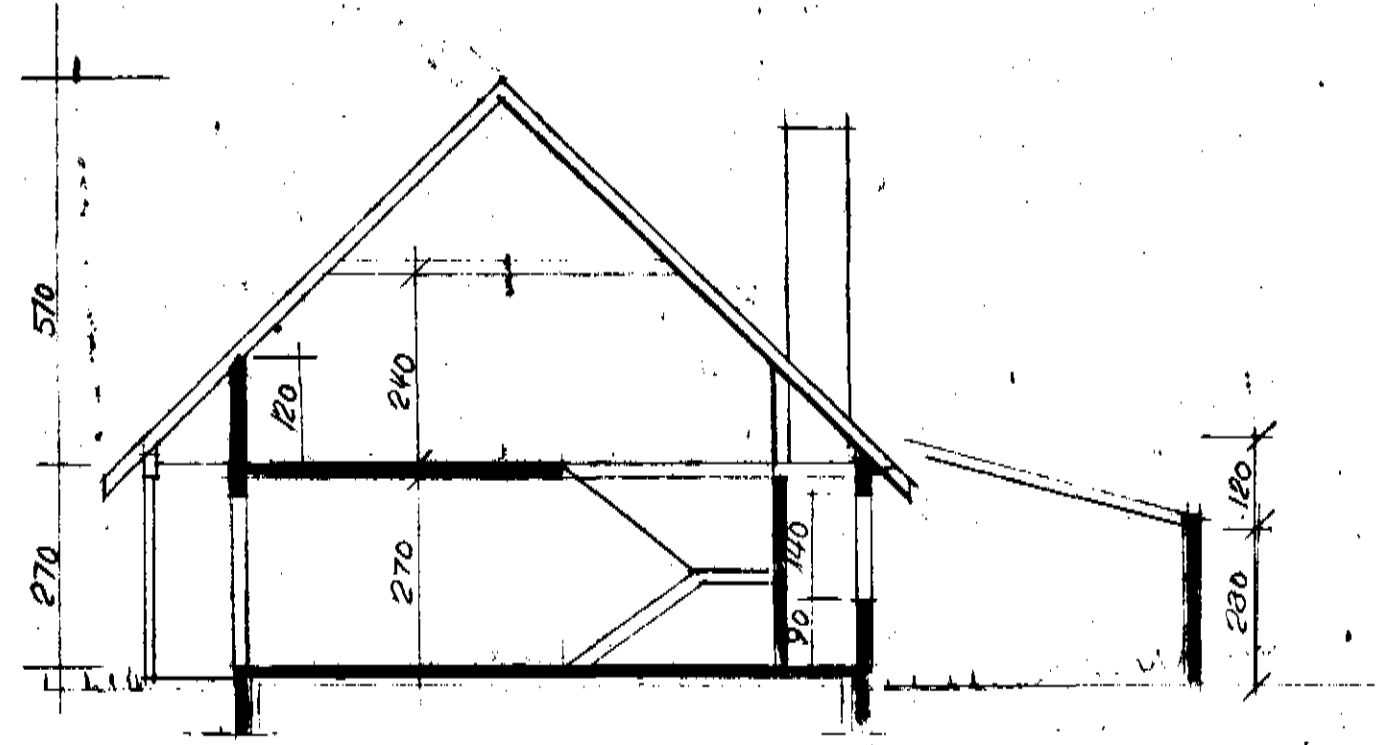


DALBRAUT

AFSTÖÐUMYND M. 1:500



| STÆÐIR | M ² B | M ² N | M ³ | | |
|---------|------------------|------------------|----------------|-------|----|
| 1. HEÐ | 1020 | 900 | | 102.0 | 01 |
| LOFT | 81.6 | 54.6 | | 67.2 | 02 |
| SATALS | 183.6 | 144.6 | 596.7 | 169.2 | |
| BILSKUR | 36.0 | | 104.4 | 3 | |

BR 2/7 KVISTIR

DALBRAUT 10

M. 1: 100 1:500
 - GRUNNM-SNID
 T. MAJ '79
 H. Þ. Þeinguymey
 SVEINBJÖRN STEINGRÍMSSON FTI.