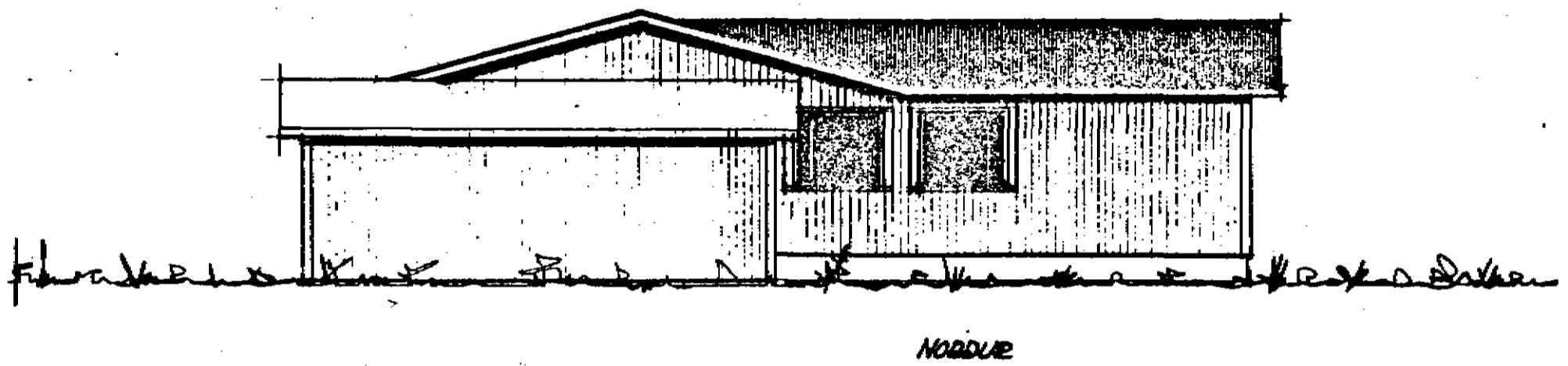
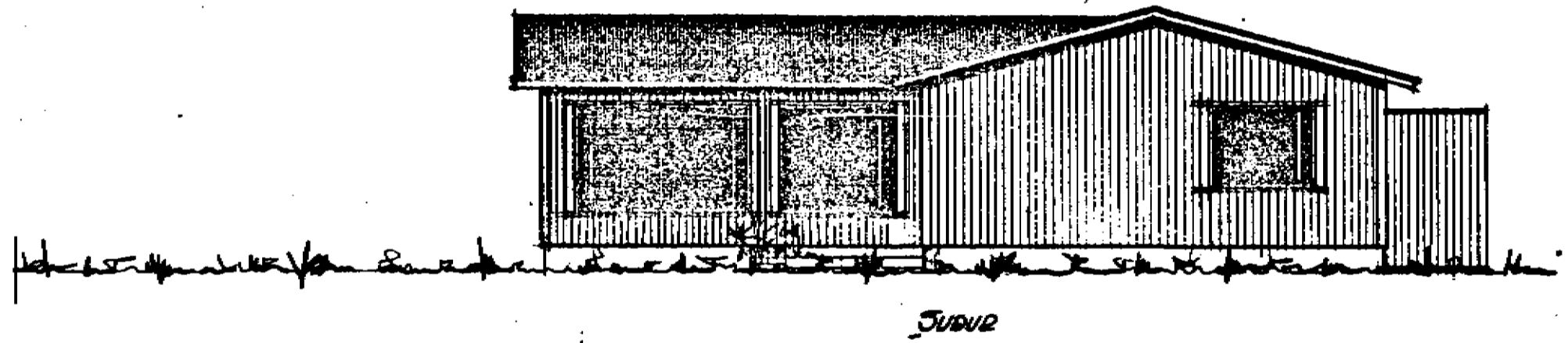


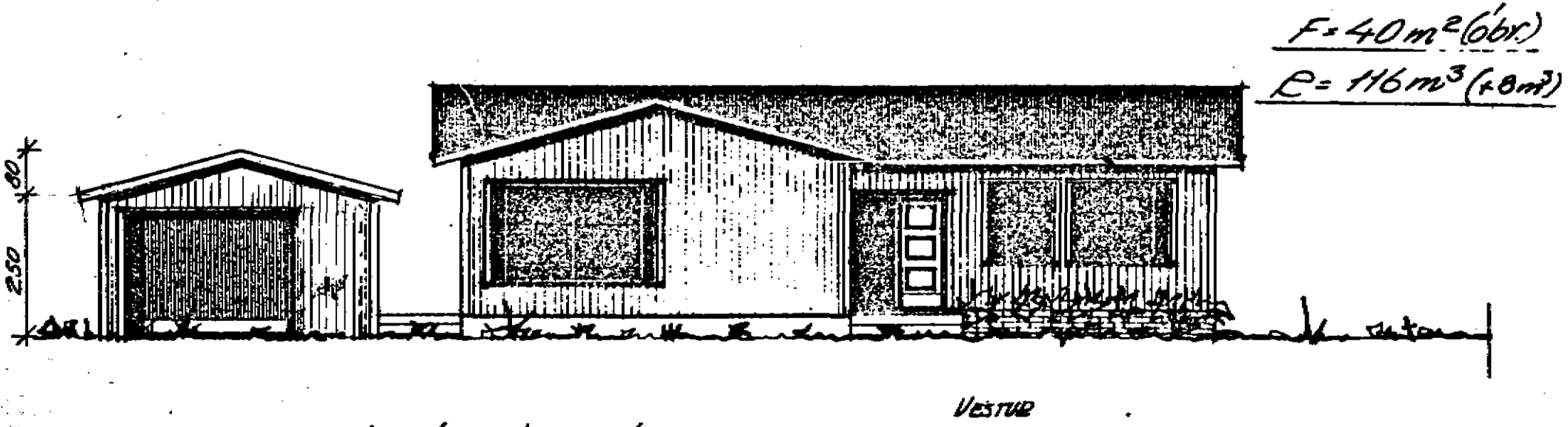
AUSTUR



NORDUR



SUDUR



VESTUR

$F = 40 \text{ m}^2 \text{ (obr.)}$
 $P = 116 \text{ m}^3 \text{ (+8 m}^3\text{)}$

Göngudyr færðar á svoturhlíð
 Flötu baki breytt í ris.
 Gert með samþykkti höfudáttar
 06.07.83 J.B.

BÖGGVISBEAUF 21
 ÚTLITSBÆYTING Á M=1:100
 BÍLSKÚP