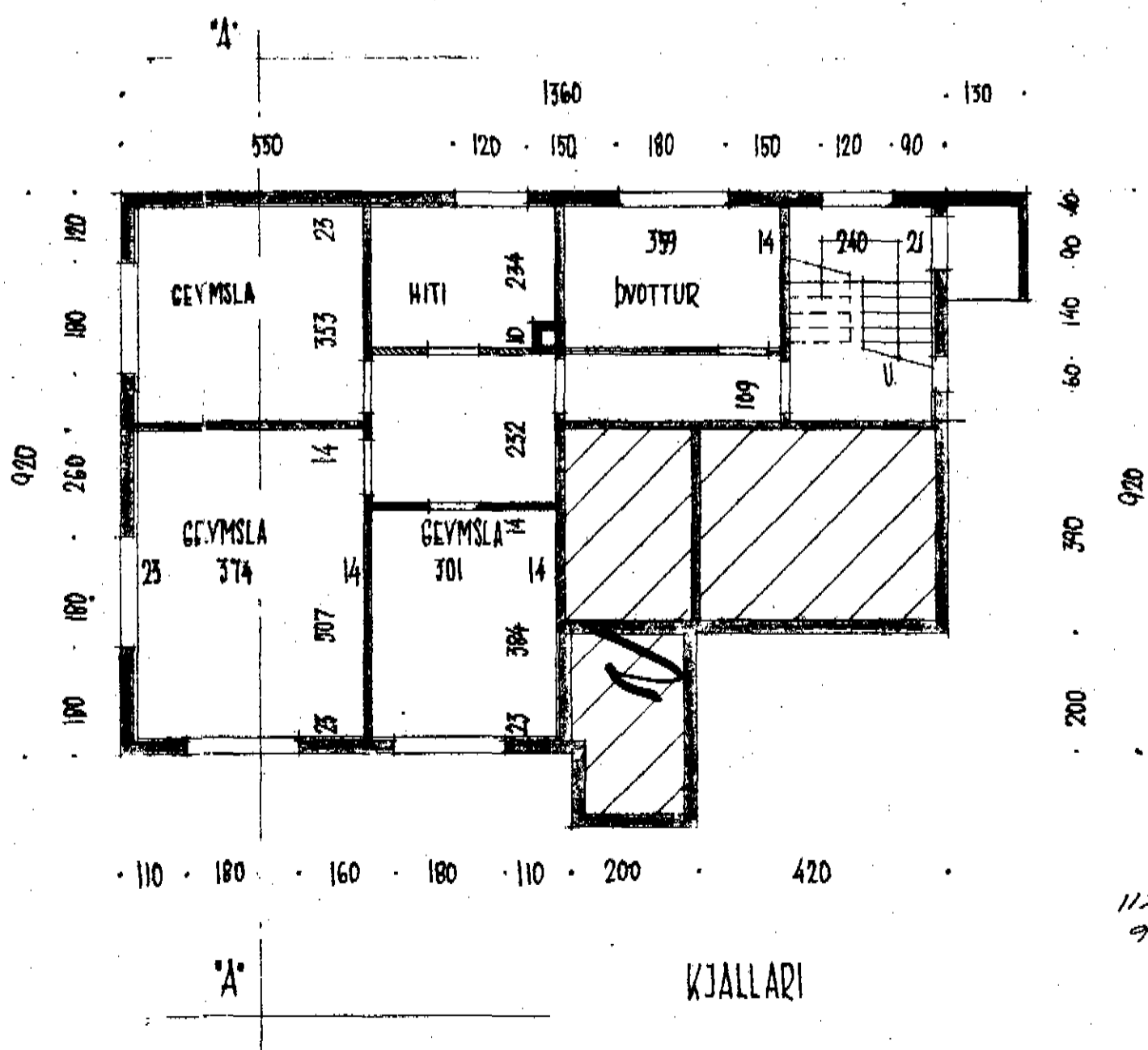
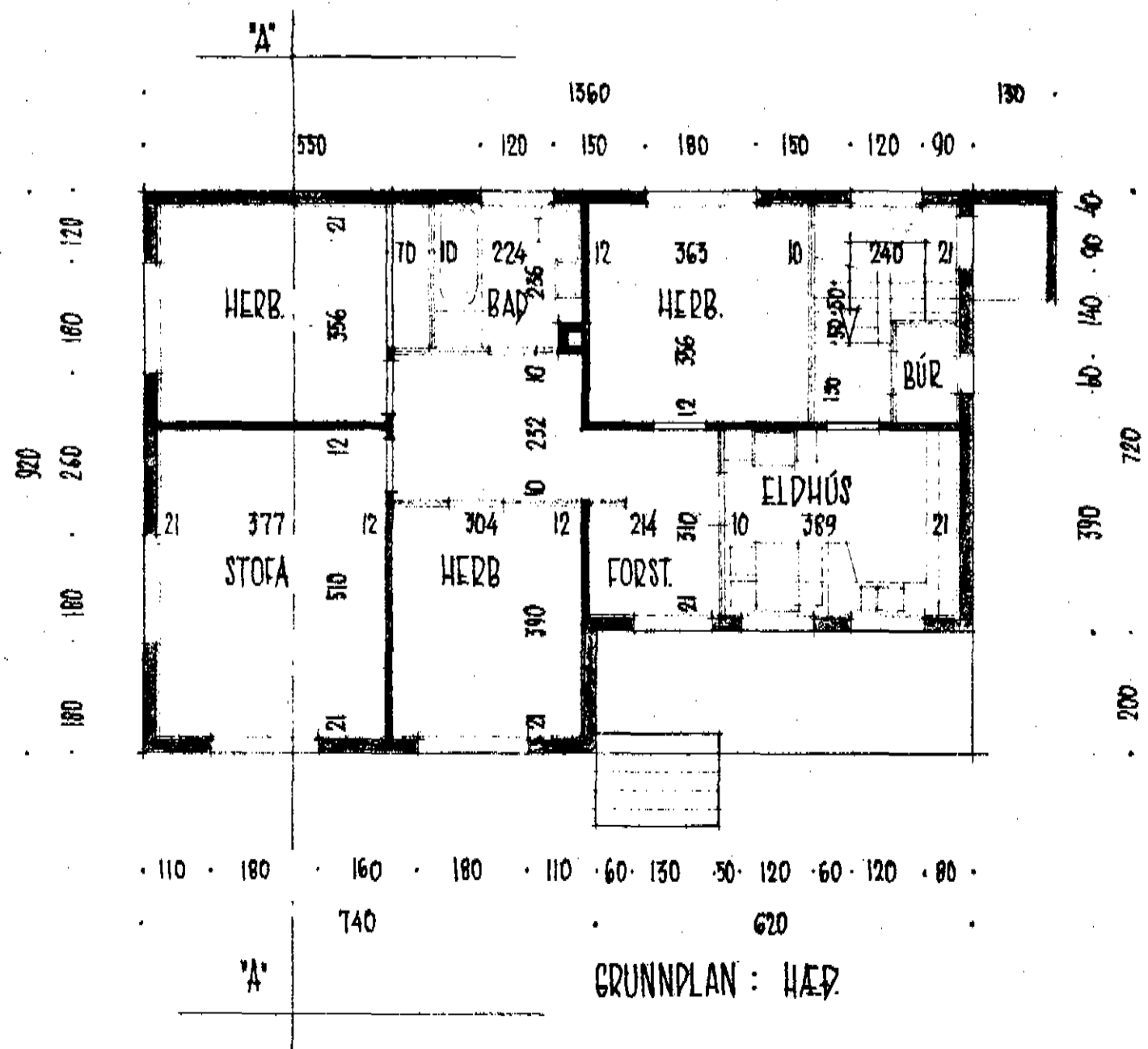
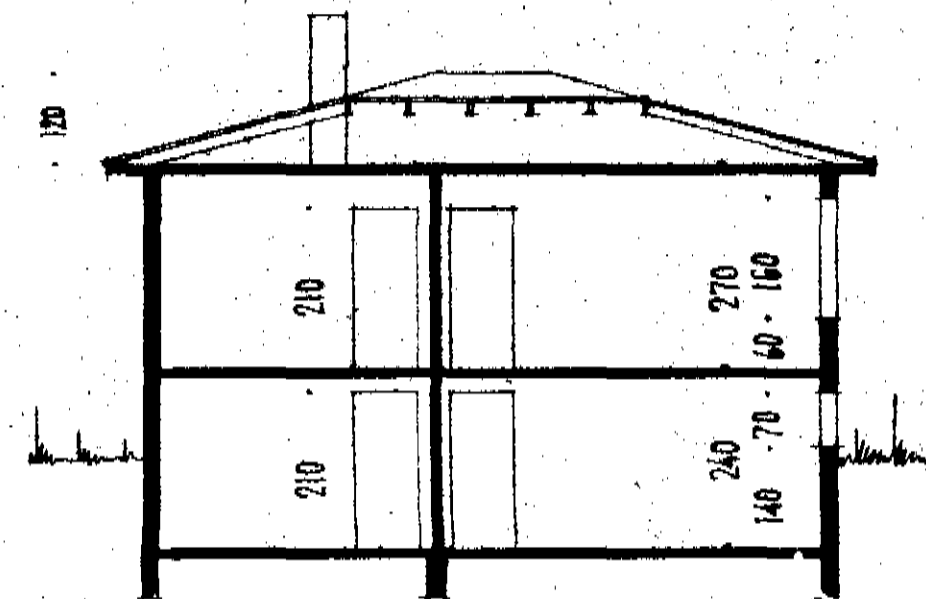
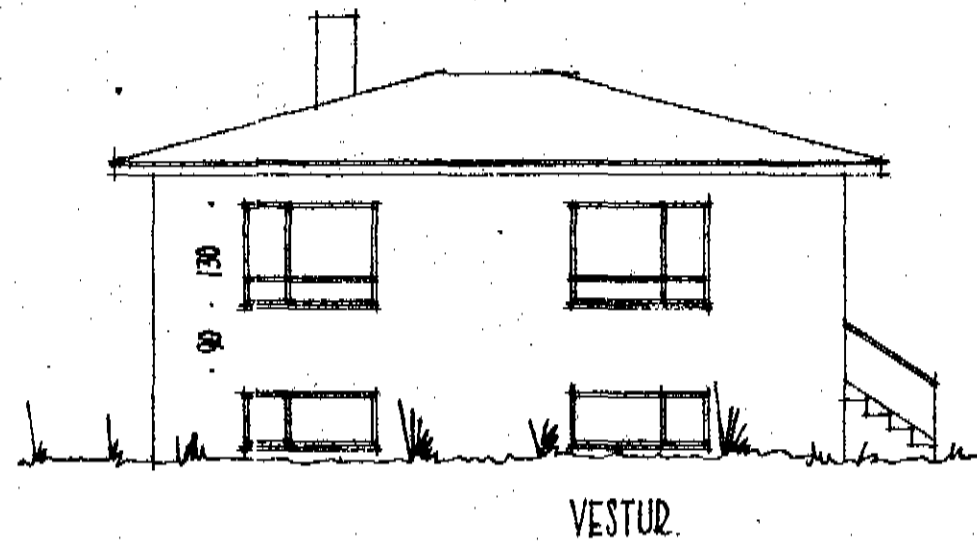
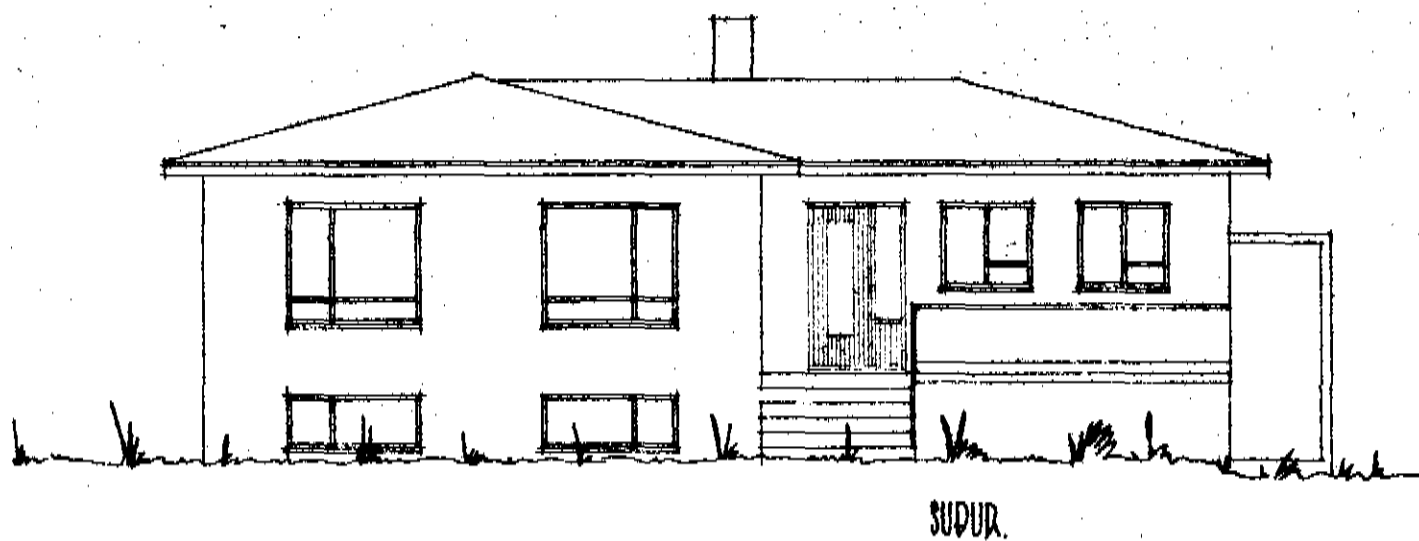


Kjallari 112,7 m² 270,5 m³
 Hæð 112,7 m² 304,3 m³
 Þak 46,8 m³
 621,5 m³



$112,72 \times 2,70 = 304,34$
 $91,64 \times 2,40 = 219,93$
 Þak 67,63
 Sámt: 591,94

BÄRUGATA 10
 HÚS ÞÓRIS STEFÁNSSONAR
 DALVÍK
 MÁL 1:100
 AKUREYRI Í JÚNÍ 1958
 Hilmar Jóhannesson
 BÄRUGATA 10

